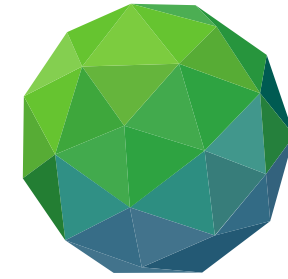


LDC ACCESS TO THE GFC FOR NAP AND ADAPTATION PROJECTS



GREEN
CLIMATE
FUND

LEG NAP Workshop for African LDCs and Haiti

21-24 February 2023

STRATEGIC CHOICE OF PARTNERS

Kabishi Tshilumba
Regional Manager - Africa
Division of Country Programming

Matchmaking – selecting the right partner for the right objective

Readiness Delivery Partner

- Institutions selected by the NDA to implement activities approved under the Readiness and Preparatory Support Programme
- Provide services, e.g. development of readiness request proposals; implementation and supervision; fiduciary management; progress reporting; and project completion and evaluation

Examples: Global Green Growth Institute;
Environmental Project Implementation Unit

Accredited Entity

- Design projects and develop funding proposals to be considered by GCF for financing based on country priorities
- Implement, deliver, monitor and report on the results of such activities
- Manage executing entities
- Develop and periodically update an entity work programme that is aligned with country programme

Examples: UNDP, IFC, GIZ
FUNDACIÓN AVINA
Deutsche Bank AG;
XacBank

Executing Entity

- Any entity through which GCF proceeds are channeled or used for the purposes of a Funded Activity or part thereof
- An entity that executes, carries out or implements a Funded Activity, or any part thereof

Examples: XacBank,
Central American Bank
for Economic Integration,
Burkina Rural
Electrification Agency

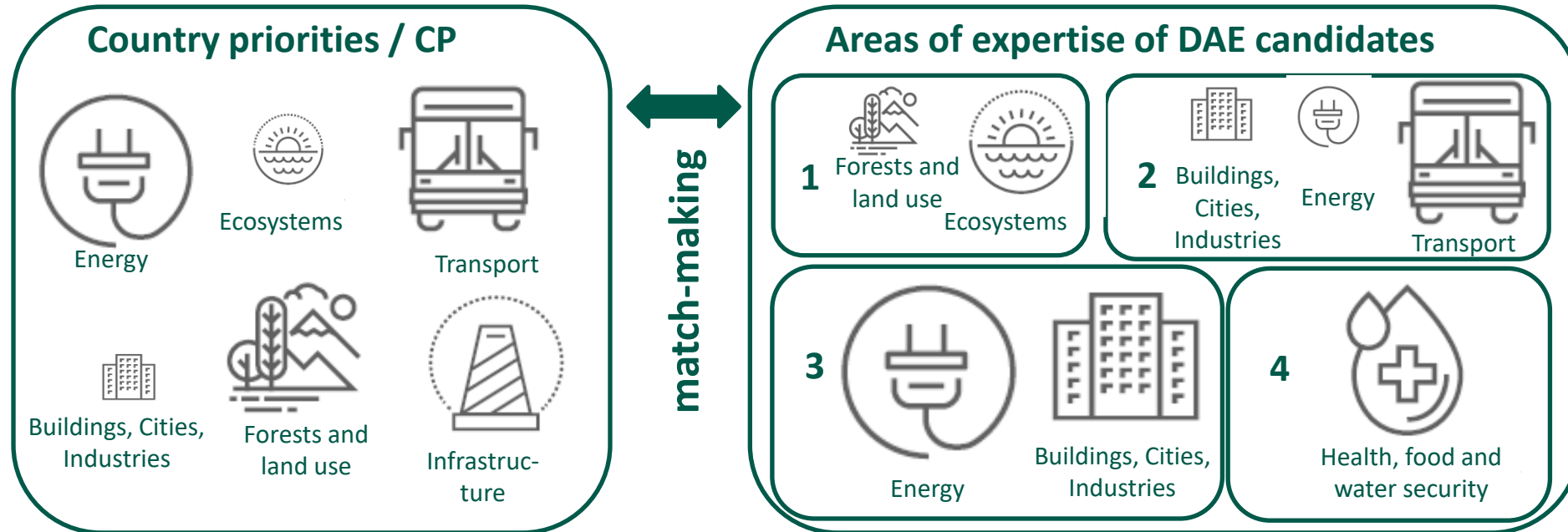


Accreditation Approach: Role of accredited entities

Key elements of an AE's role:

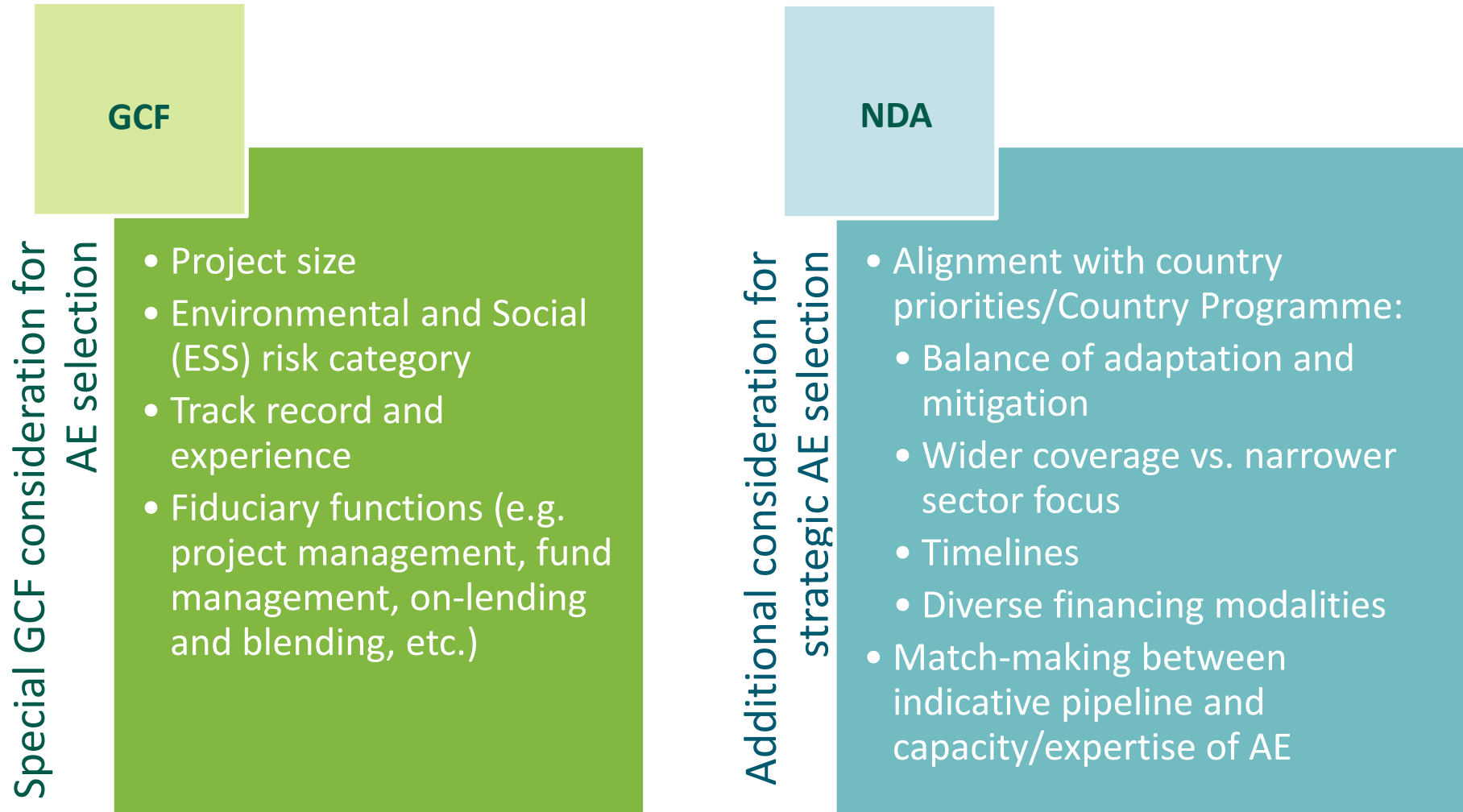
- **Design projects and develop funding proposals** to be considered by GCF for financing based on country priorities
- **Implement, deliver, monitor** and report the results of such activities
- **Develop and periodically update an entity work programme** while aligning it with country programmes (for regional DAEs and IAEs only)

Example: Selecting (and nominating DAEs)



- ✓ What is the value added of a DAE candidate in the context of CP and overall engagement with the GCF?
- ✓ How many and which DAE candidates (national or regional, public or private) provide value added in the context of CP and overall engagement?
- ✓ Has the DAE candidate the required (project management) expertise?

Considerations for cooperation with AE



Fit-for-Purpose Accreditation

Mandate & track record

- Alignment with Fund objectives
- At least 3 year of operations

Project size

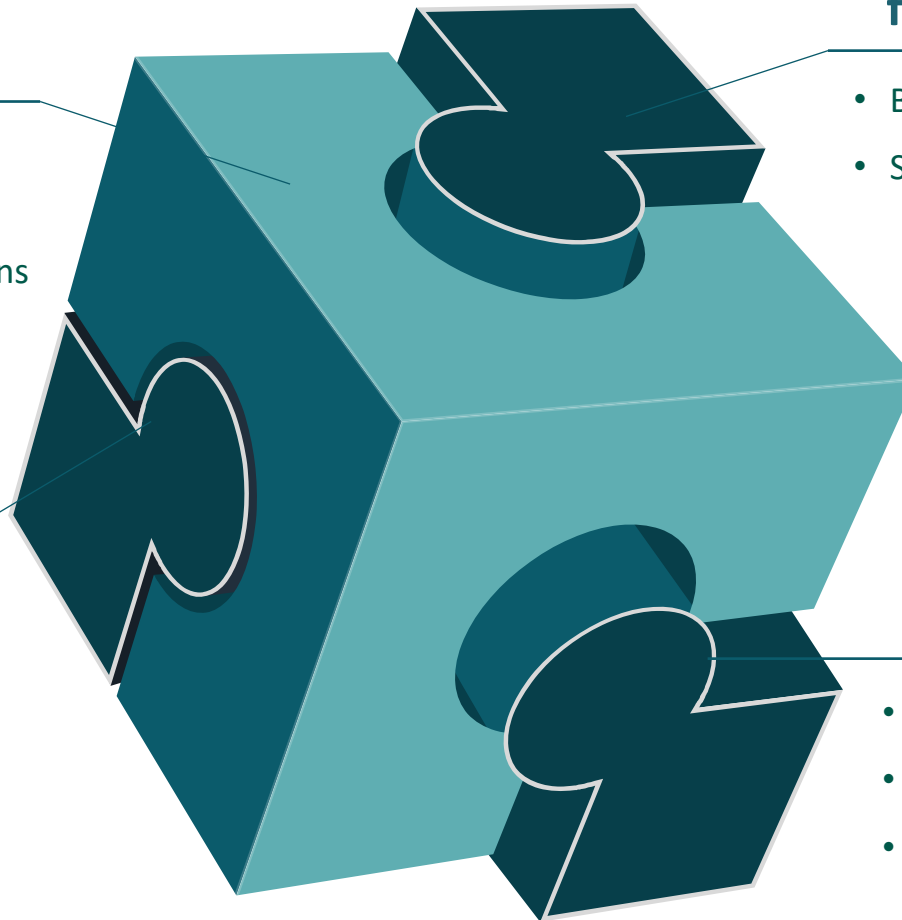
- Micro (<10M)
- Small (10-50M)
- Medium (50-250M)
- Large (>250M)

Fiduciary functions

- Basic
- Specialized

Environment & social risk category

- A (high)
- B (medium)
- C (minimal or no)





GCF Accredited Entities

- 114 accredited entities
- 51% national DAEs, 11% regional DAEs, 38% IAEs
- African regional DAEs: Attijariwafa Bank, Banque Ouest Africaine de Développement (BOAD), Development Bank of Southern Africa (DBSA), Observatoire du Sahara et du Sahel (OSS)
- IAEs working exclusively or mainly in Africa: African Development Bank (AfDB), Africa Finance Corporation (AFC), Acumen

2021 ANNUAL RESULTS REPORT



@GCFOfficial



green-climate-fund



greencimatefund



@theGCF



Scan this QR code to download the report



GCF's fiduciary standards, ESS and gender policy*

Basic Fiduciary Standards

- Key administrative and financial capacities
- Transparency and accountability

Specialized Fiduciary Standards

- Project management
- Grant award and/or funding allocation mechanisms
- On-lending and/or blending

Gender Policy

- Policies, procedures, and competencies

Environmental and Social Safeguards (ESS)

Institutional ESMS policy-level:

✓ Performance Standard (PS) 1:

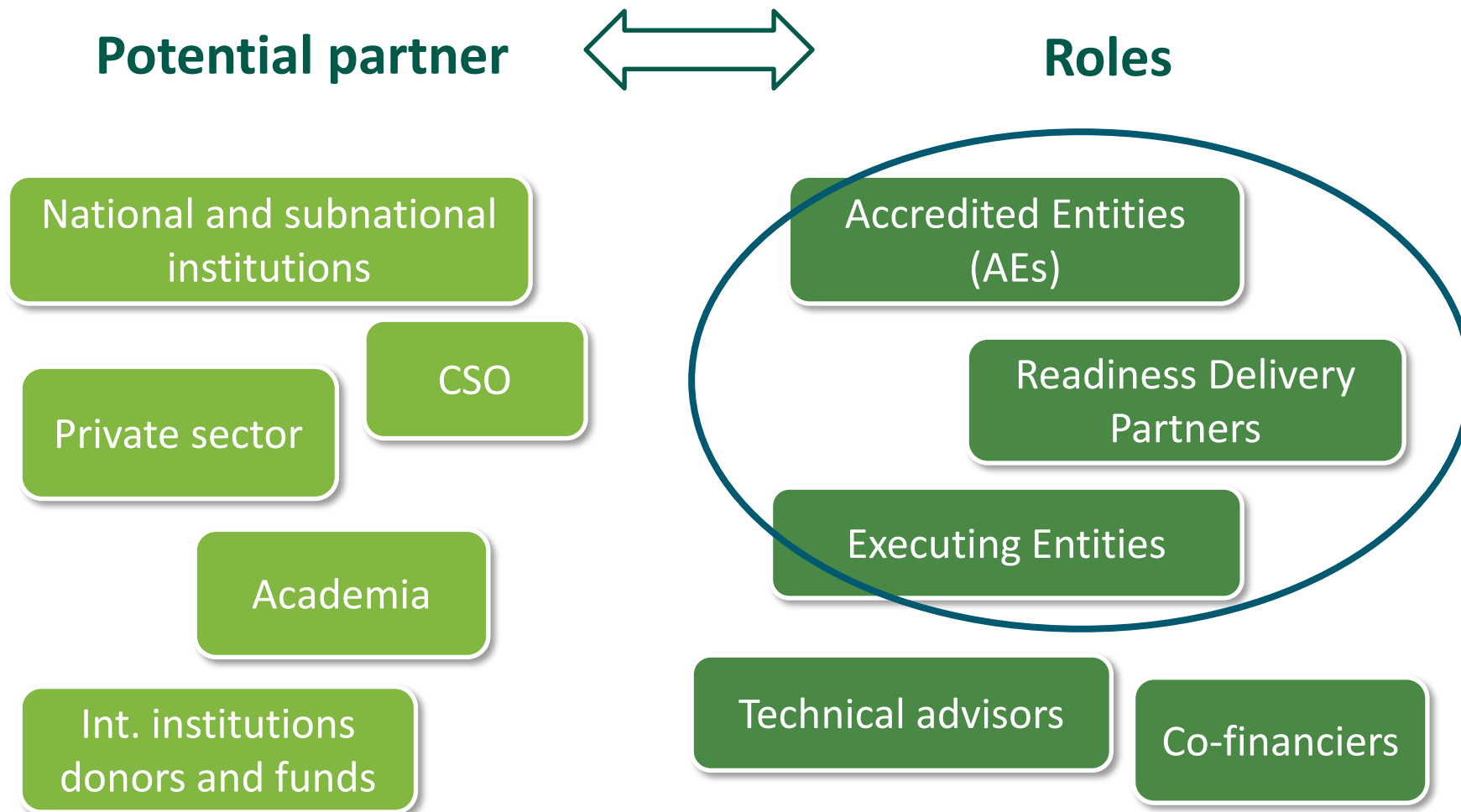
Assessment and management of relevant PS1-8 environmental and social risks and impacts through an environmental and social management (ESMS)

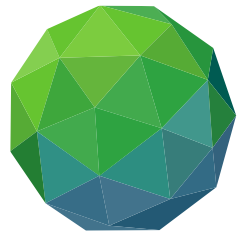
Project-level:

- ✓ PS2: Labor and working conditions
- ✓ PS3: Resource efficiency and pollution prevention
- ✓ PS4: Community health, safety and security
- ✓ PS5: Land acquisition and involuntary resettlement
- ✓ PS6: Biodiversity conservation and sustainable management of living natural resources
- ✓ PS7: Indigenous peoples
- ✓ PS8: Cultural heritage

* For more details, refer to the [initial guiding accreditation framework](#), [fiduciary standards](#), [Interim Policy on Prohibitive Practices](#), [ESS](#), [Information Disclosure Policy](#) for E&S report disclosure requirements, and [gender policy](#).

Potential partners and roles





GREEN
CLIMATE
FUND

**Raising
ambition.**
**Empowering
action.**