

Session 2.2.1 Regional approaches in implementing NAPs (LEG), 29 Aug 2023

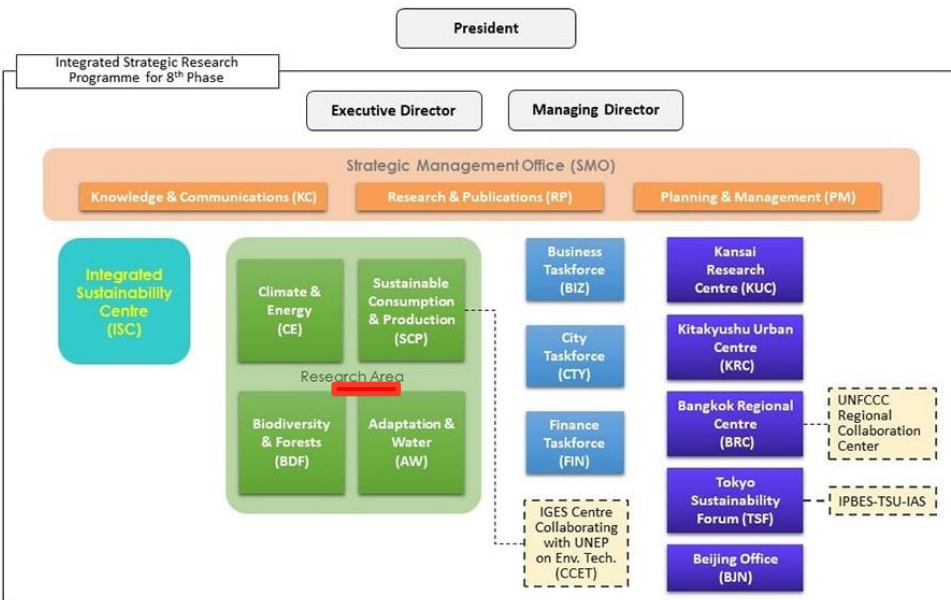
Seeds for Transforming Contemporary State of Adaptation Practices



Binaya Raj Shivakoti
Senior Adaptation and Water Specialist



About IGES



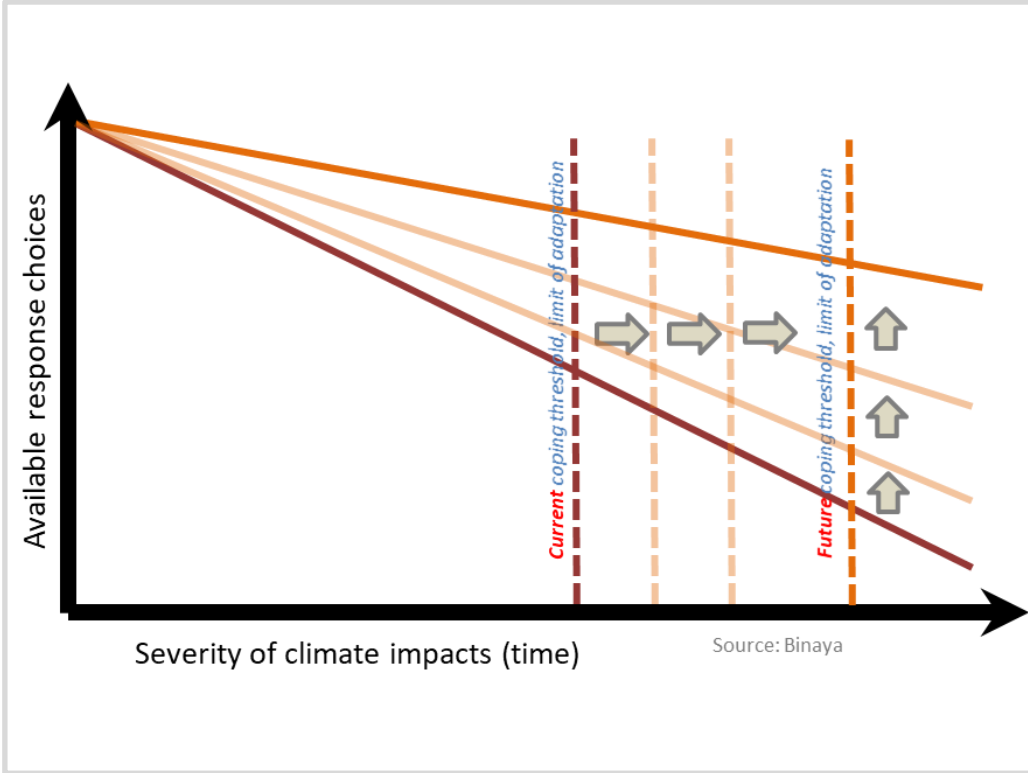
Established under an initiative of the Japanese government in 1998 with the support of Kanagawa Prefecture where IGES Headquarters is located.



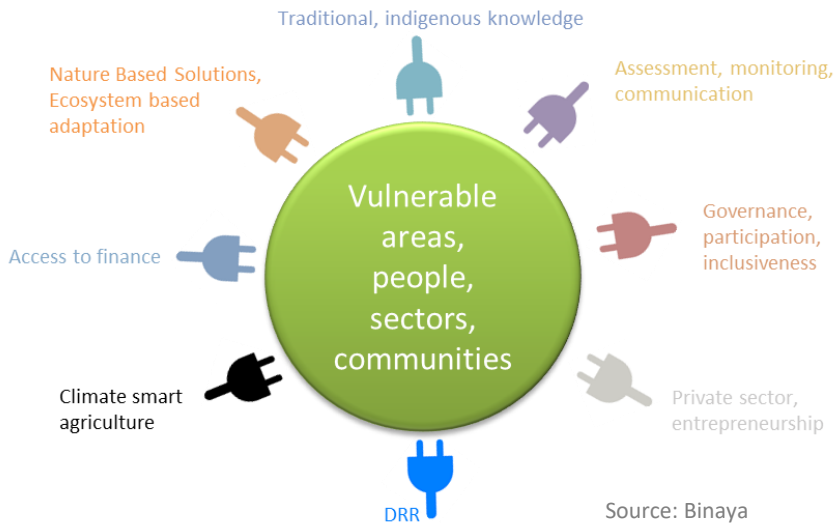
Aims to bring about a transition to **a sustainable, resilient, shared, and inclusive Asia-Pacific region and the world**



Contemporary Challenge



INCREASING COMPLEXITY,
UNCOORDINATE ACTIONS,
QUESTIONABLE RESULTS



OUR APPROACH

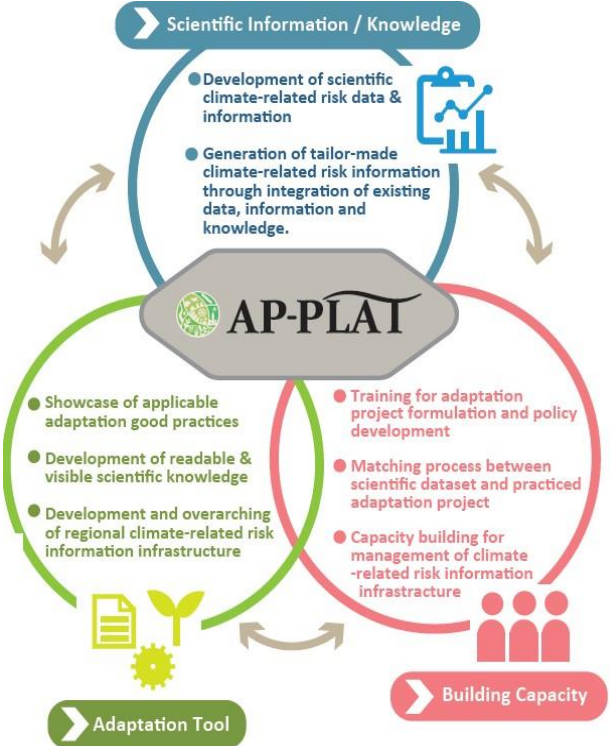
“No single entity can tame the climate change crisis, so there is no alternative other than joining forces/capacities that are severely divided”



KEY INITIATIVES TOWARDS REGIONAL COLLABORATION



Asia-Pacific Climate Change Adaptation Information Platform (AP-PLAT)



AP-PLAT was established in 2019 during a **G20 Ministerial Meeting** as a **platform** to enable environment for climate-risk informed decision making and practical adaptation action through partnership in Asia-Pacific.

IGES's Contributions as a Core Delivering Partner of AP-PLAT for Capacity Building

<https://ap-plat.nies.go.jp/>

Regional NAP Expo for Asia and the Pacific | 28 to 30 August 2023 | Incheon, Republic of Korea |

BAL ADAPTATION WEEK 2023
A New Era For Adaptation: Science, Policy, Innovation

BUILDING CAPACITY FOR DRR X CCA INTEGRATION

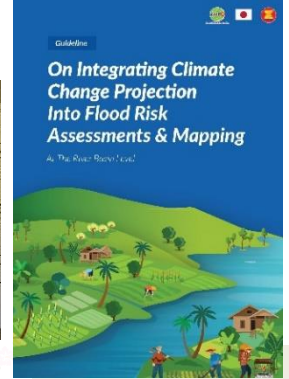
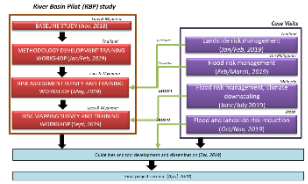
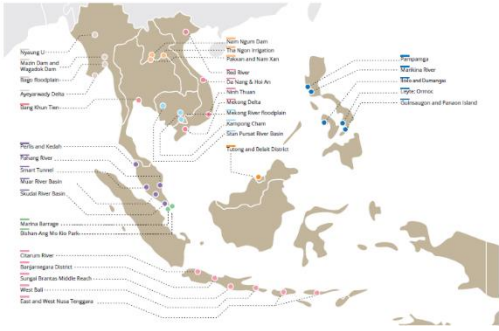
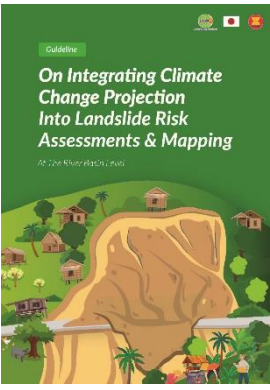
IN ASEAN

Participatory learning and co-development

Documentation of good practices



One Against Disaster and Climate Risks
A Repository of Good Practices for Strengthening DRR and CCA Integration in ASEAN



Regional NAP Expo for Asia and the Pacific | 28 to 30 August 2023 | Incheon, Republic of Korea |

Binaya Raj Shivakoti



KOREA GLOBAL ADAPTATION WEEK 2023

LOCAL PREPAREDNESS AGAINST COMPOUND AND CASCADING DISASTER RISKS

(CCDR)

E-learning tool



Lesson 1
 Compound and cascading disaster risks. What are they?



Lesson 2
 Six steps of disaster risk assessment



Lesson 3
 Designing resilience enhancing measures



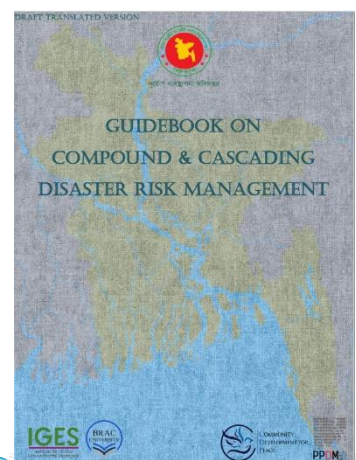
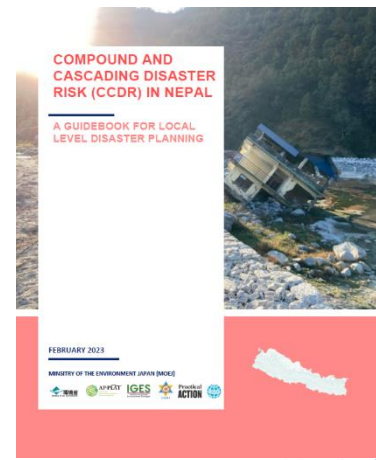
Lesson 4
 Adaptive implementation framework



Conclusion
 Summary of the course



CCDR Planning Guidebook



DEVELOPING BLUEPRINT OF LOCALLY LED ADAPATION

(LLA)



Practical ACTION

*As hubs for LLA innovation and learning
Regional cross-learning and collaboration
Blueprint for upscaling LLA actions
Led by local partners
Youth engagement
Focus on indigenous, traditional and local knowledge system
Build enduring capacity at the local level*

Model Case Study Sites

FIJI: Vusama village, Viti Levu, Fiji

Mangrove replantation using traditional knowledge
(picture: Prof. Patrick Nunn)

NEPAL: Dang & Rolpa districts

Traditional subsistence farming
(picture: Practical Action)

VIETNAM: Van Ho district, Son La province

Terrace farming by ethnic minorities
(picture: Prof. Ho Ngoc Son)

- High vulnerability and low capacity
- Climate change impacts visible in the form of untimely, high, low, late rainfall, droughts, increasing sea tides in Fiji
- Awareness of the local communities on climate change is limited
- Using their in-built knowledge systems and experience to cope with changes and impacts
- Limited capacity to plan and address the impacts in a systemic manner



PROMOTING TRADITIONAL/INDIGENOUS AND LOCAL

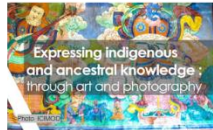
KNOWLEDGE SYSTEMS (ILK or TLK)



Promoting bottom-up innovation to integrate ILK into local adaptation planning



Community radios
Training on effective modes of communication



University and youth involvement for blending of ILK and science and validation of ILK

CALL FOR SUBMISSIONS!
Cases and documents on indigenous and local knowledge systems and practices in the HKH



Conservation of traditional pond



Location of a lost traditional pond

INTER-GENERATIONAL TRANSFER OF ILK/TLK

Attracting youths,
prevent outmigration

Effective uses of local
media and their
capacity building

Capacitating youths
for climate action

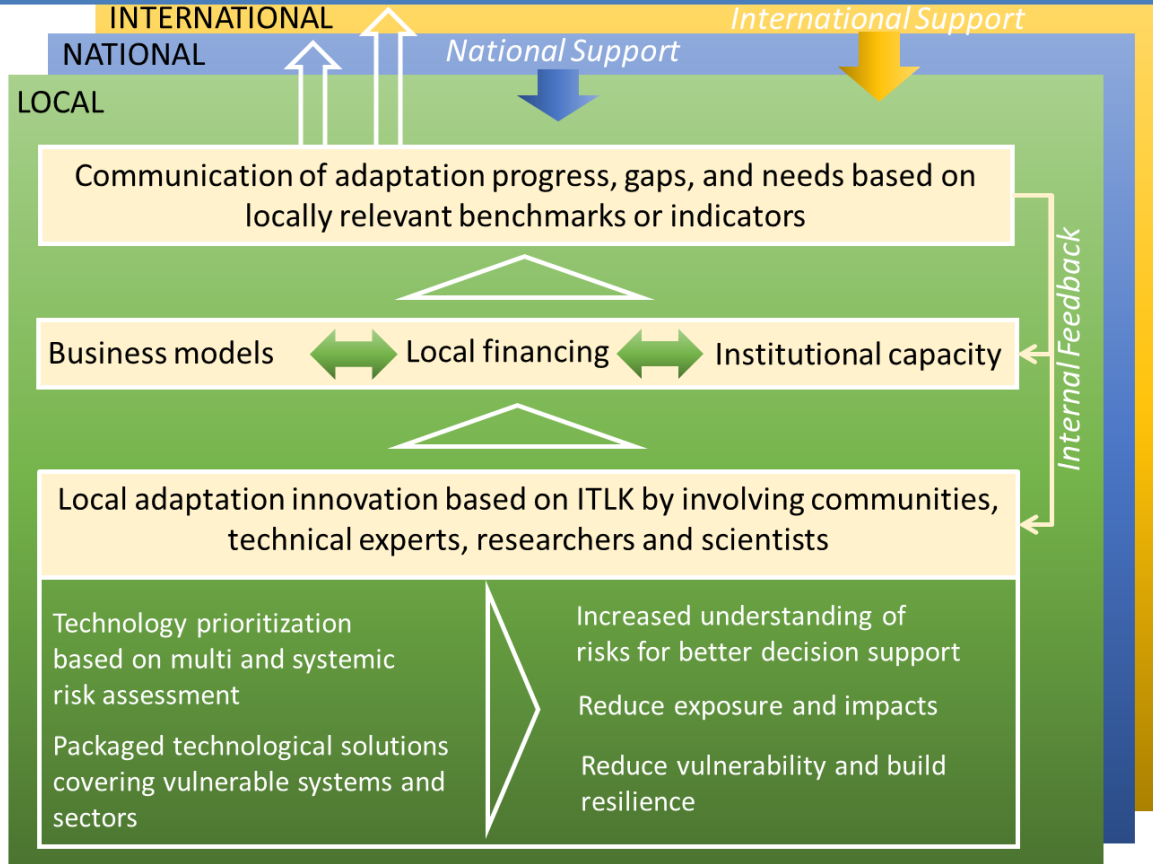


Regional NAP Expo for Asia and the Pacific | 28 to 30 August 2023 | Incheon, Republic of Korea | Binaya Raj Shivakoti



KOREA GLOBAL ADAPTATION WEEK 2023
A New Era for Adaptation: Science, Policy, Action & Innovation

BOTTOM-UP ADAPTATION COMMUNICATION



Source: Binaya/ESCAP



NEW OPPORTUNITY FOR DESIGNING ILK/ITLK BASED ADAPATION SOULTIONS

- Address knowledge gaps: how to identify, validate and map ILK/TLK?
- Solution design: how to build ILK/TLK based adaptation solution that are investment ready?
- Private sector engagement: How to revive the craftsmanship and profession within the ecosystem to support ILK/TLK based adaptation solutions?
- Effective implementation: How to building network of experts and stakeholders locally,

GCF DOCUMENTATION

COUNTRIES

Readiness Proposal

with Institute for Global Environmental Strategies (IGES), Japan for the Islamic Republic of Pakistan and Federal Democratic Republic of Nepal
1 March 2023



ROADMAP FOR RESILIENT NET-ZERO TRANSFORMATION IN ASEAN

- Adaptation actions will inevitably incur uses of energy such as to address heat stresses in cities, solar irrigation, desalination, etc.
 - There is also risk to energy security due to climate impacts (damages due to natural disaster, sudden spike to energy demand)
 - Countries are increasingly stressing the need for adaptation-mitigation synergistic actions
 - Most of the nature-based solutions have both adaptation and mitigation co-benefits
-
- Future model of development should be primarily guided by societal needs and priorities dictated by the risk associated with an era of rapid climate change



Thank you and welcome to IGES!!

Special Acknowledgement: APN, AP-PLAT, Shushin-hi (1CN-2006), GCF, ASEAN