

Transforming Adaptation: Harnessing the Power of GCF for Effective NAP Implementation

Bapon Fakhrudin, PhD

Water Sector Senior Specialist, DMA

29 August 2023



**KOREA GLOBAL
ADAPTATION
WEEK 2023**

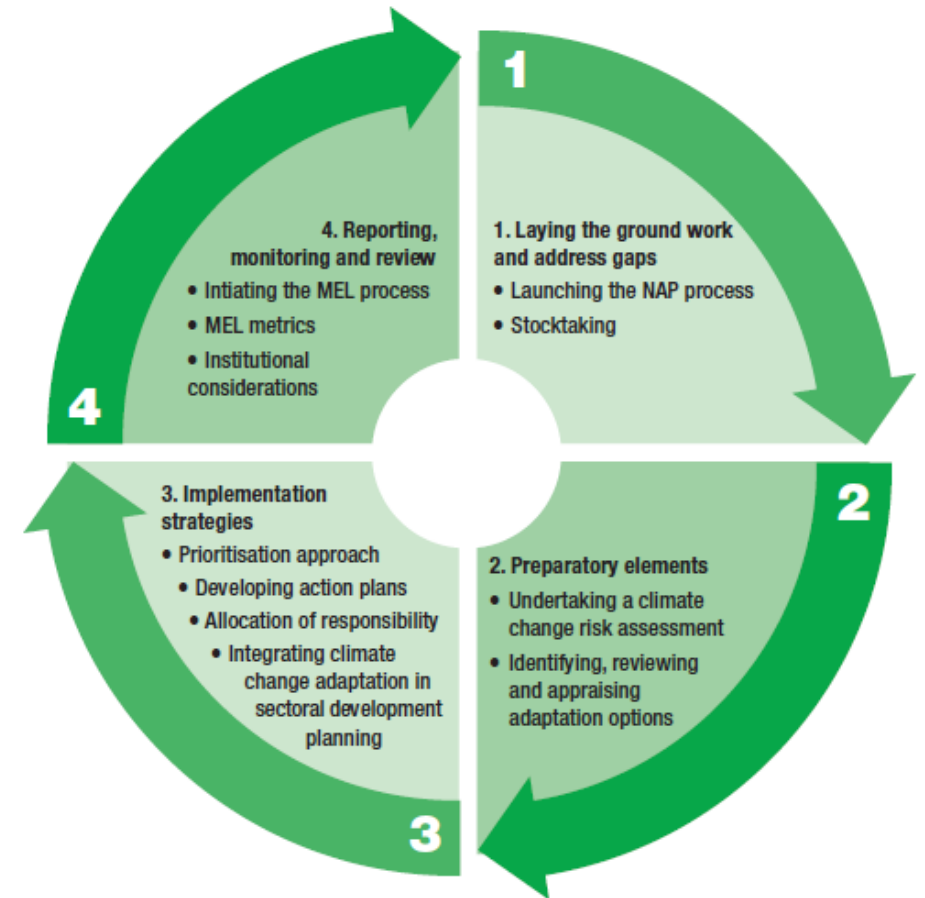
*A New Era for Adaptation:
Scaling Up and Transformation in Adaptation*

Aug. 28(Mon.)-Sept. 1(Fri.), 2023



Entry Point in NAP Process

The NAP process presents an opportunity for countries to define and articulate “transformational adaptation”, which could include the identification of investment ideas that are considered innovative and paradigm shifting in the context of your country.



Where we focus



GREEN
CLIMATE
FUND

Reduced Emissions from:



Energy generation
and access



Transport



Buildings, cities,
industries and
appliances



Forests and
land use



Livelihoods of people
and communities



Health, food and
water security



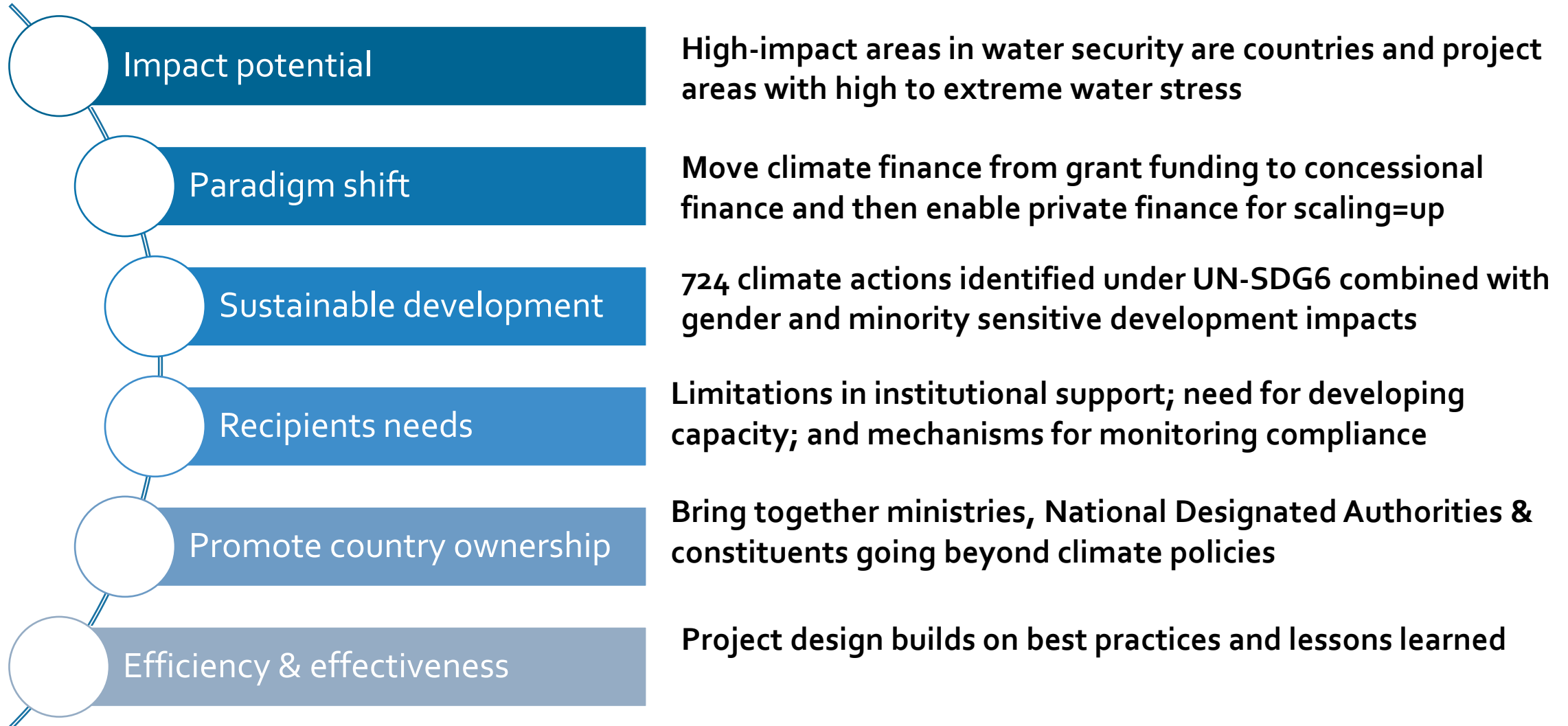
Infrastructure and
the built environment



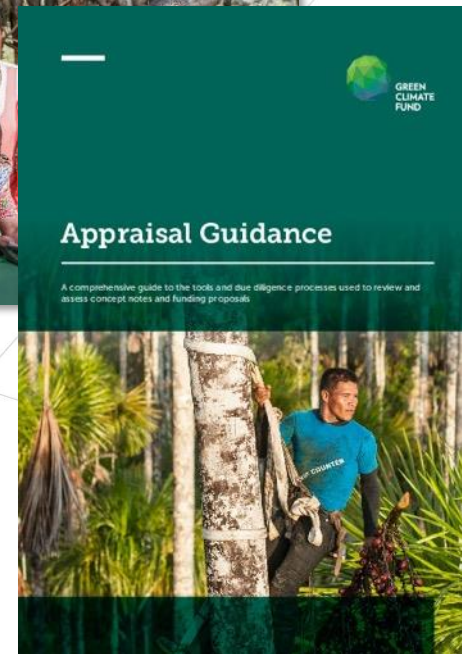
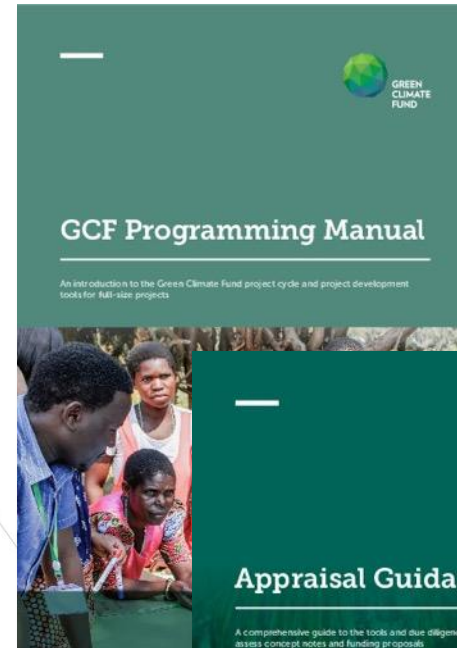
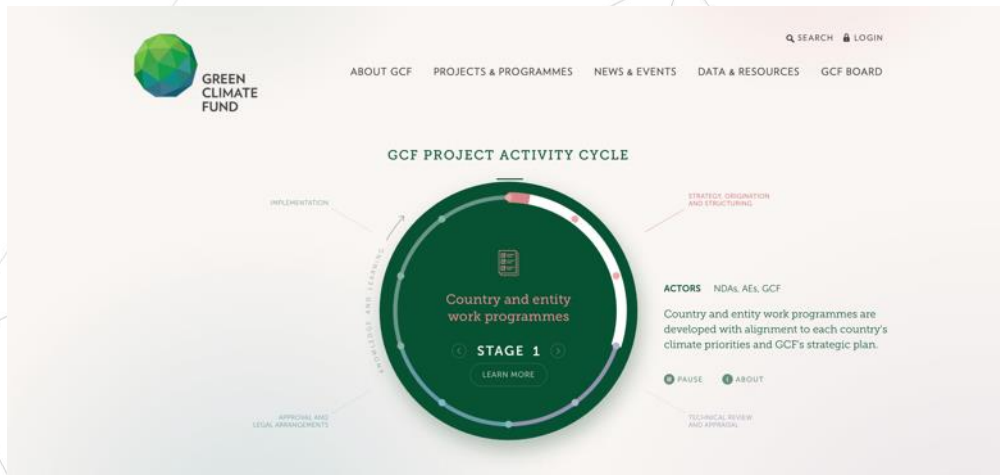
Ecosystems and
ecosystem services



GCF Investment criteria: (example-Water Security Sector)



Access and Simplification measures





Sectoral and Practical Guide: Water security



Sectoral Guide Consultation Version 1

Water security



Annex I | Water Security Sectoral Guide

GCF Water Project Design Guidelines

Part 1: Practical guidelines for designing water-climate resilient projects

Annex II | Water Security Sectoral Guide

GCF Water Project Design Guidelines

Part 2: Applications of the Practical guidelines for designing water-climate resilient projects in IWRM, CR-WASH, and Drought and Flood management

- <https://www.greenclimate.fund/document/sectoral-guide-water-security>
- Aims to guide project proposal development in the water sector in line with GCFs investment criteria
- An inspirational document for the development of GCF funding proposals

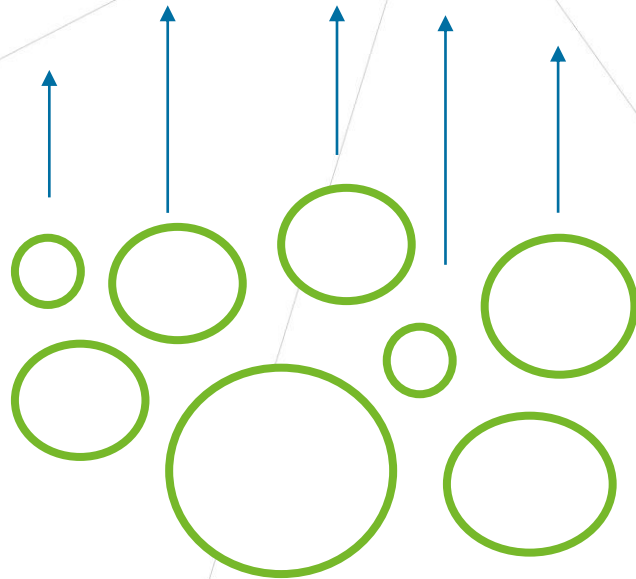
SHIFTING THE MODEL FOR NDC/NAP/LTS IMPLEMENTATION



GREEN
CLIMATE
FUND

Status quo / "incremental" approach

NDC / NAP / LTS



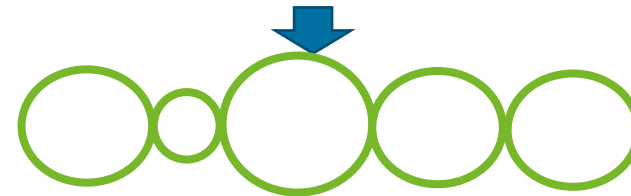
AEs/countries identify discrete project ideas, usually within one sector/area, fitted into the NDC narrative. Climate risk assessments, feasibility studies and project structuring done on a case-by-case basis, with frequent review iterations required.

Desired / "systemic" approach

NDC / NAP / LTS

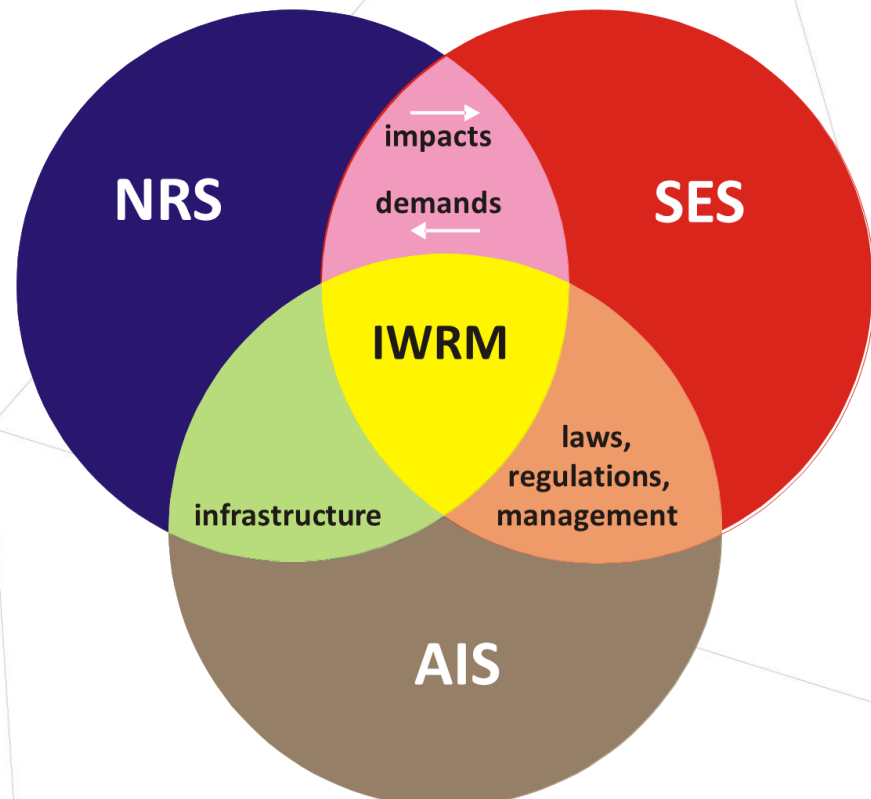
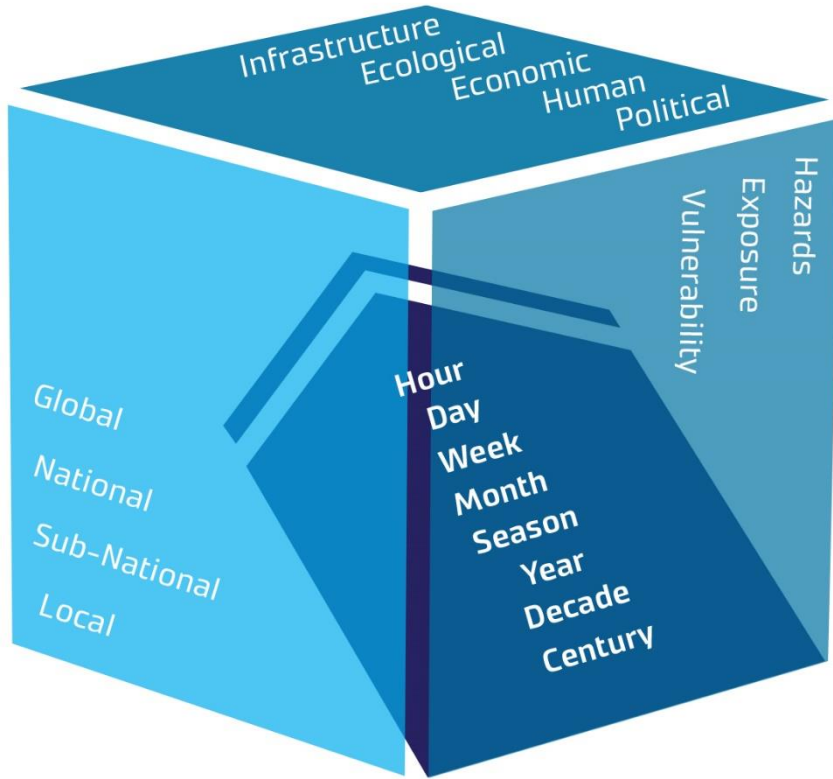
Systemic climate analysis / feasibility assessment – to ID most critical responses

Analysis of financial sources & structuring to optimize bankable projects & use of GCF resources

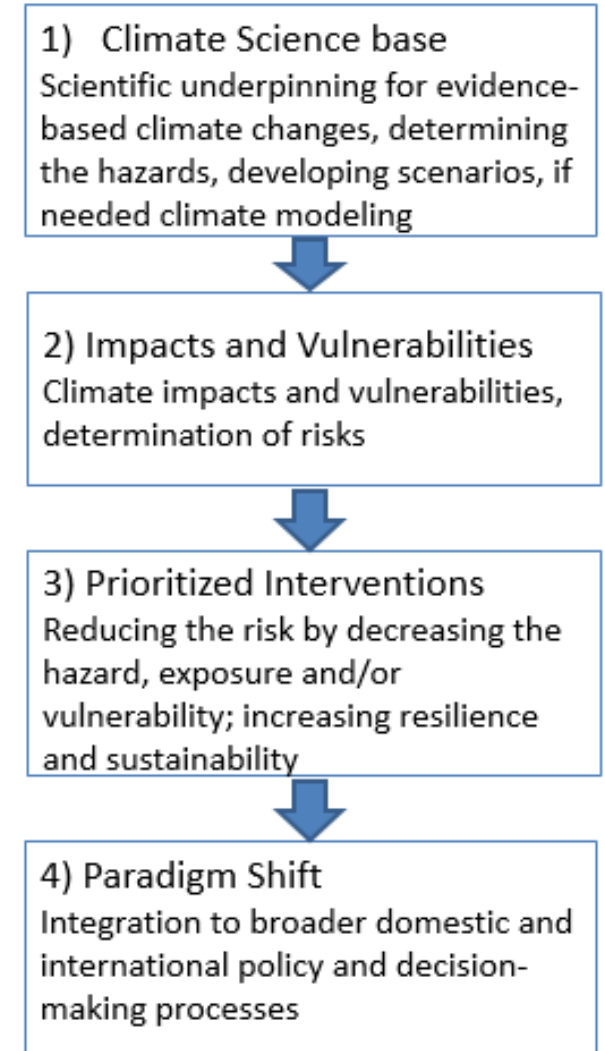
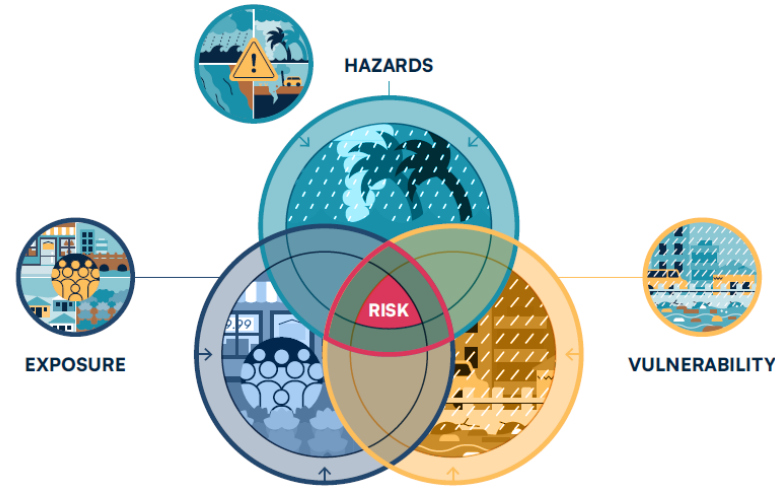
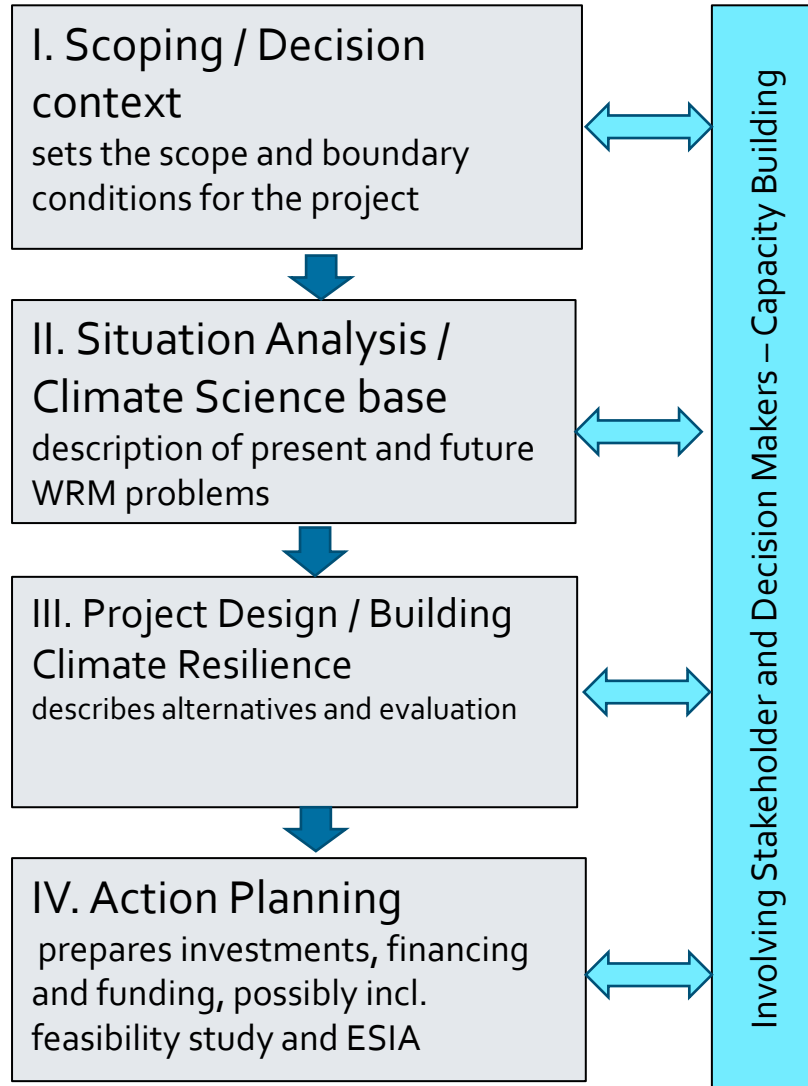


NDCs guide priority intervention areas. Climate assessments and feasibility studies done at a systems level, looking at trade-offs/synergies across sectors. Leads to analysis of financial sources & structuring of an optimized programme of investments

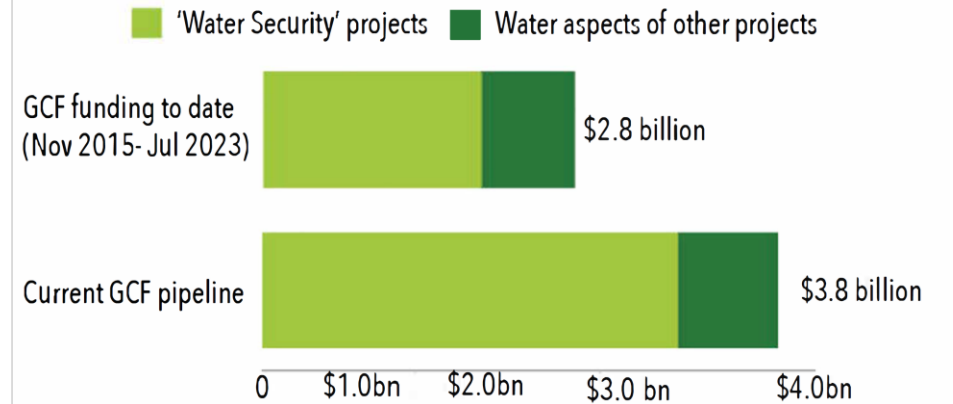
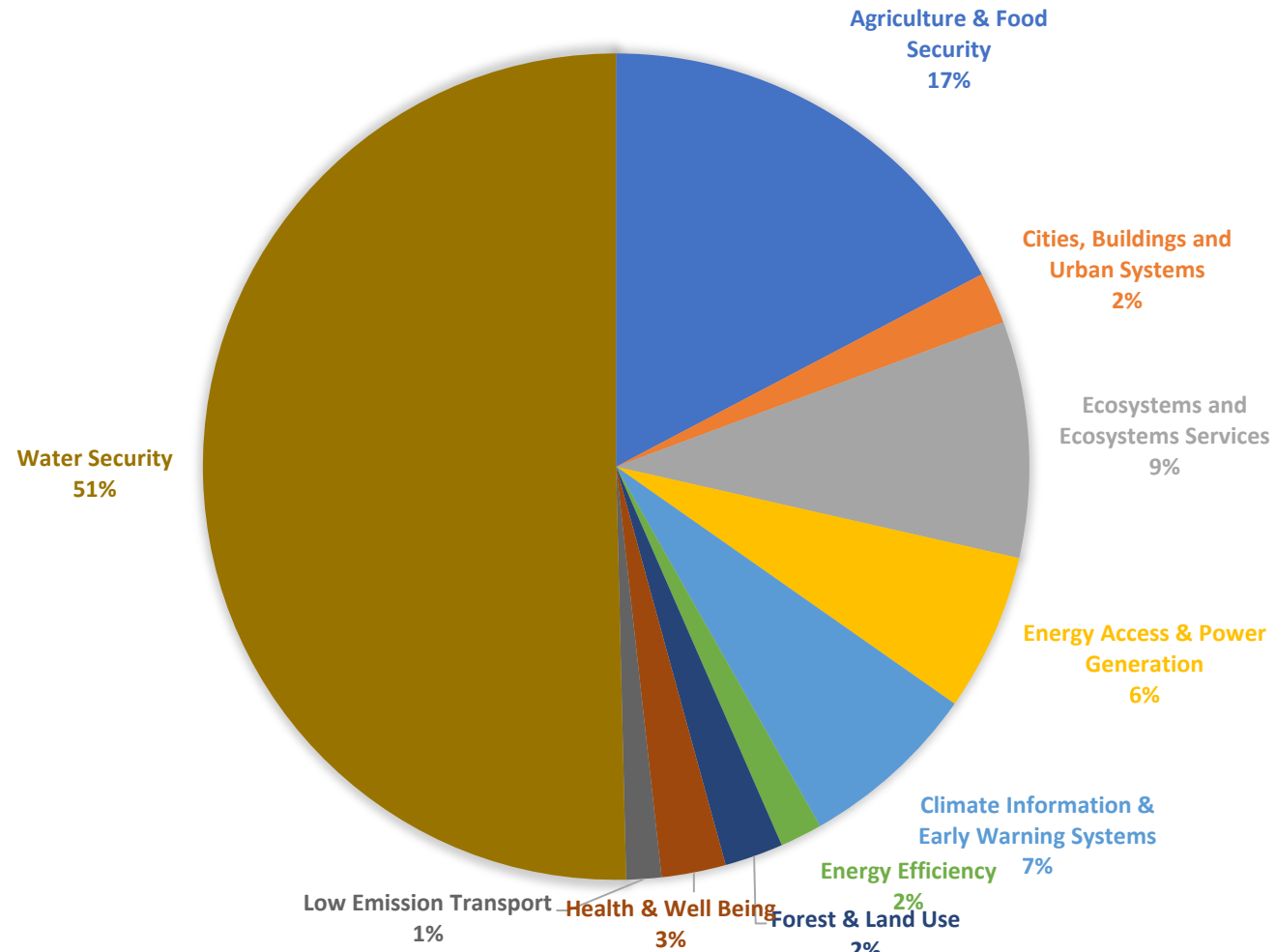
Key Principles - Systems thinking - Integrating the sub-systems



Key Principles- Structured approach for project design



Water Security Projects (2023)



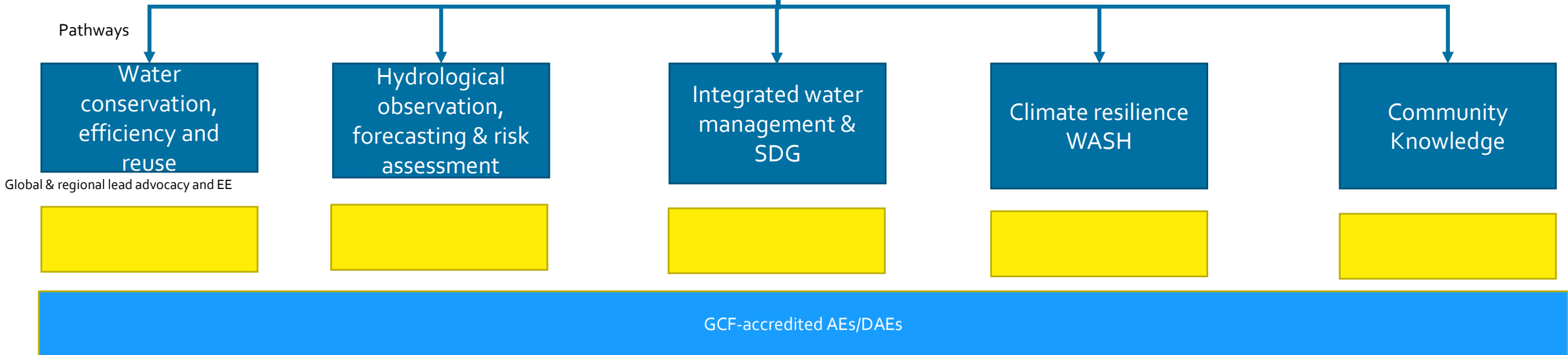
Water Security for Climate Resilience



Blending grants with innovative financial instruments like water bonds, cat bonds, guarantors, investment, insurance, debt for climate swaps

WSCR-CoP

Flexible and delegated need-based projects for countries using nexus and integrated approach



Early Warning for All Global Support Program (Incubator)

First project by the GCF, UNDP and donors with 4 Pillars of EWS₄ALL as EE to enable coordination, develop pipeline and identify pilots

EW₄all Global Support Program Umbrella Coordination

CN and PPF developed for this project that will serve as the Umbrella Program for the Initiative

Pipeline Acceleration *(funded via donor co financing)*

Enabling Condition *(via WMO, UNDRR, ITU and IFRC)*

Country-level Priority Actions *(via AE/DAE- 5 to 7 priority countries)*

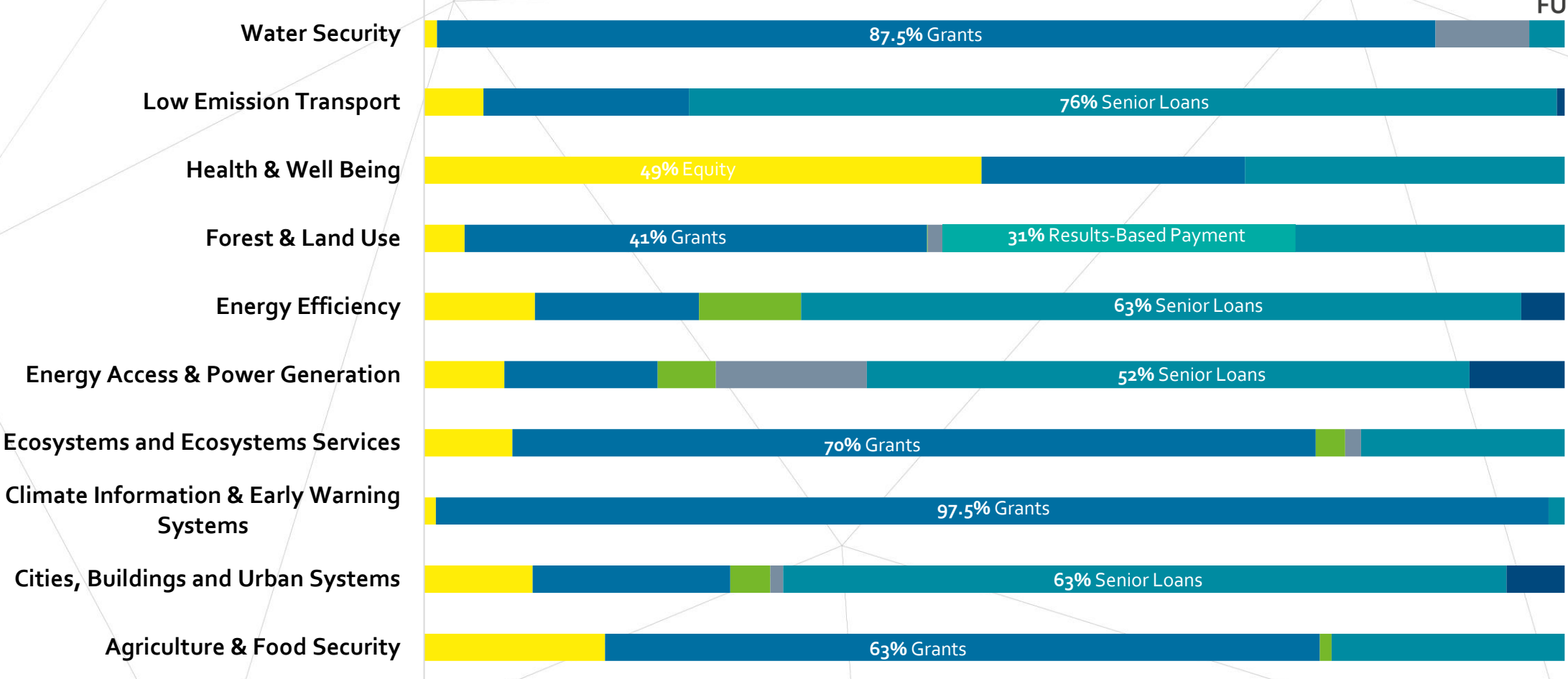
- Tailored one-on-one technical support is provided to participating countries in accordance with the global action plan
- Gap analysis at regional and national level

- Global outreach campaigns carried out with non-EW₄All partners to ensure synergies
- A global financing campaigns organized targeting donors, philanthropists, and private sector
- Advancing global knowledge
- A sustainability strategy established for the global/regional support architecture

- National level advocacy activities carried out
- Capacity building
- Investment activities
- Strengthening governance

Incubator project = Coordination project to get the investment project-development going – feeding into the accelerator series of projects

GCF Financial instrument per Sector



■ Equity
 ■ Grants
 ■ Guarantees
 ■ Reimbursable Grants
 ■ Results-Based Payment
 ■ Senior Loans
 ■ Subordinated Loans



GREEN
CLIMATE
FUND

Raising
ambition.
Empowering
action.