

NAPEXPO
CHILE 2023



Enhancing data availability for climate change
adaptation planning and implementation in
collaboration with the private sector

IDOM

Our commitment, your success

IDOM



For further information
IDOM.com

Asier Rodríguez Ochoa
asier.rodriquez@idom.com

We are an **independent firm**, providing Consulting, Engineering and Architecture services: a group of professionals united in our way of doing things and with shared objectives, at the service of our clients.



NATIONAL ADAPTATION PLAN OF PERU

Client: NAP GLOBAL NETWORK

12 SUBNATIONAL ACTION PLANS FOR CLIMATE ADAPTATION IN COSTA RICA

Client: UNEP

SUPPORT FOR LOCAL CLIMATE ACTION PLANS IN LIMA, QUITO, BUENOS AIRES AND GUADALAJARA

Client: C40

MORE THAN 40 CITY ACTION PLANS IN LATAM
Urban footprint, mitigation and adaptation to Climate Change

Client: IADB



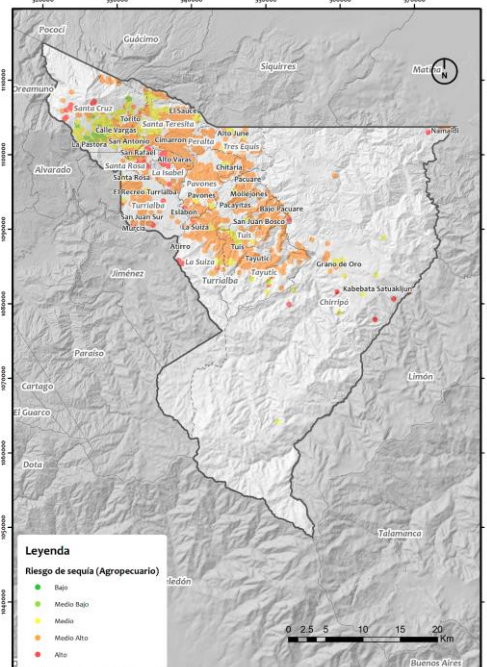
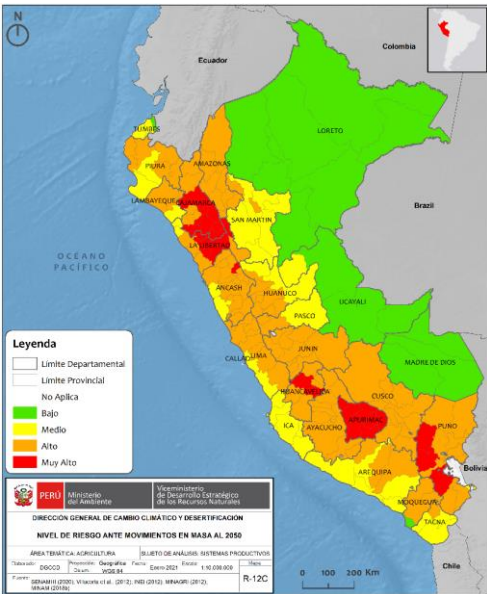
WEAKNESSES

- No future climate information on extremes was available from the public sector. Difficulty in characterizing future hazards: floods, landslides, drought and glacial retreat.
- Lack of information to characterize vulnerability in key sectors: water, sewerage and railroads.



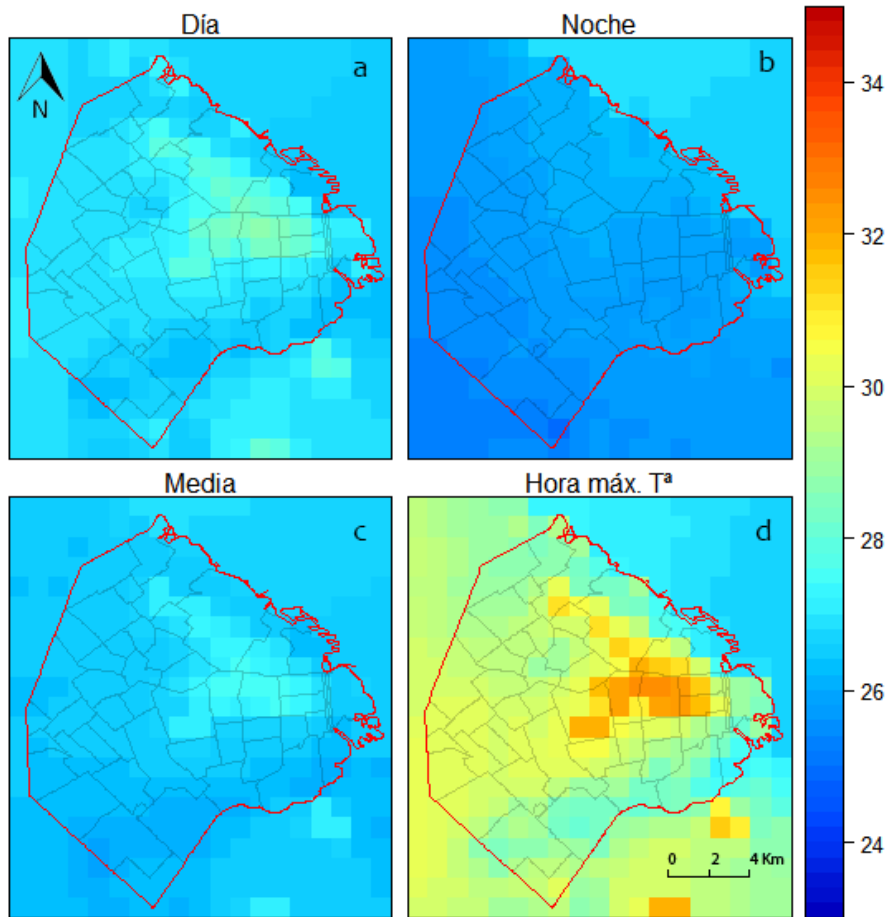
STRENGTHS

- Peru: Multisectoral Working Group composed of 15 ministries and key entities: easy access to available information.
- Costa Rica: Confidentiality agreement with the National Institute of Statistics and Census of Costa Rica.
- Costa Rica: Strategic partner in the process: CATIE (Tropical Agricultural Research and Higher Education Center).



Urban Heat Island of Buenos Aires

Meteorological simulation with the Weather Research and Forecasting Model (WRF-ARW) designed to describe or predict mesoscale weather conditions



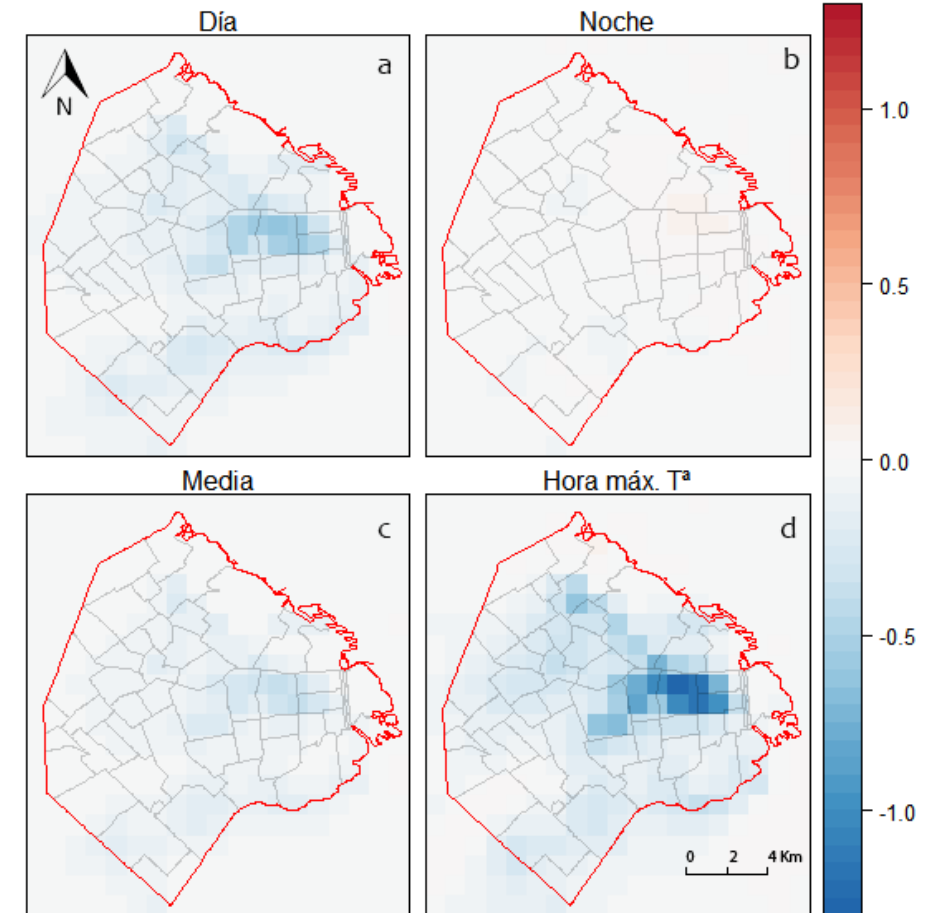
Base scenario

+

Urban parameterization that allows considering the dimensions and thermal properties of its buildings.

=

Key information for decision making for the city.



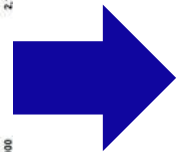
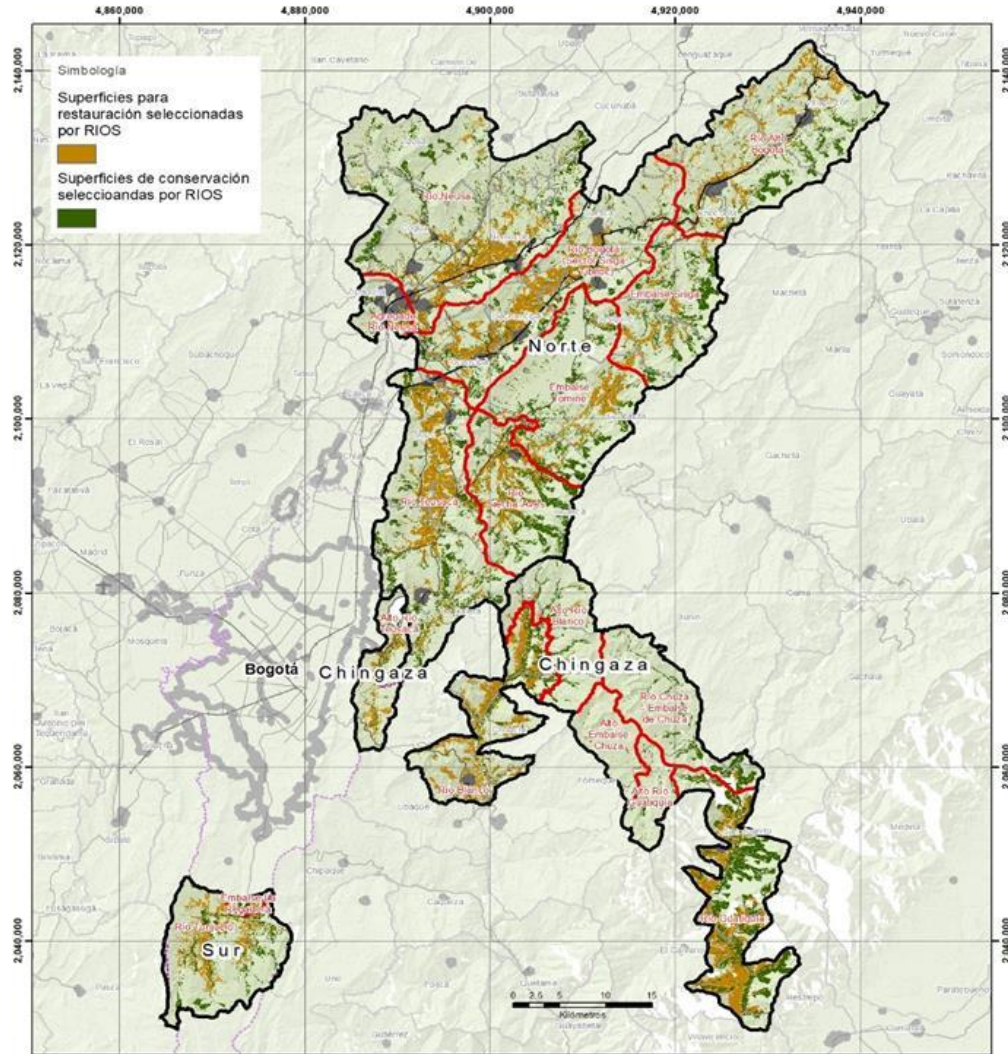
Scenario with measures



Watershed management in contexts throughout the world. It combines biophysical, social, and economic data to **help users identify the best locations for protection and restoration activities** to maximize the ecological return on investment, within the bounds of what is socially and politically feasible.

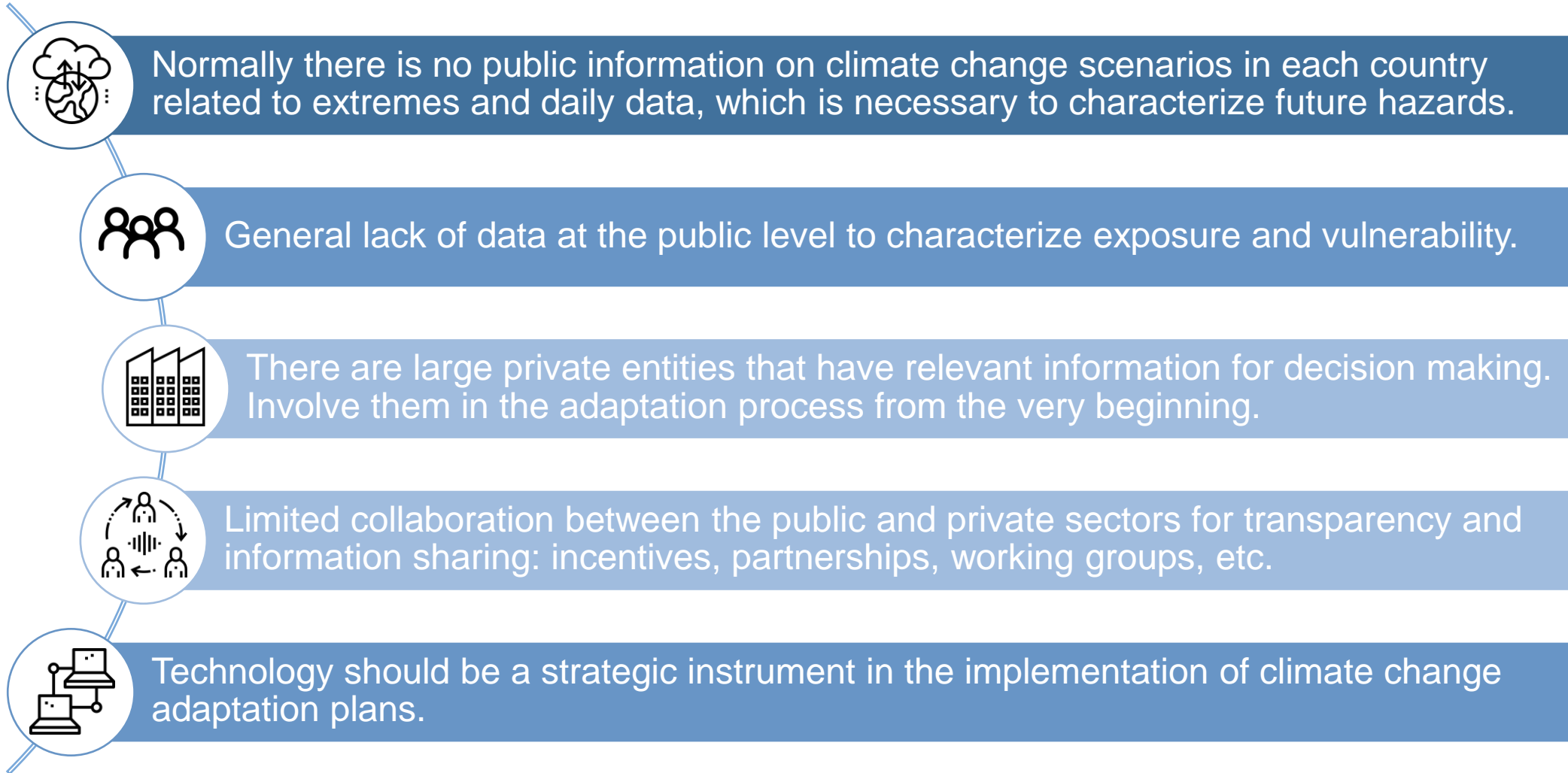


InVEST is a suite of free, open-source software models used to **map and value the goods and services** from nature that sustain and fulfill human life.



- With RIOS it was possible to identify the main areas for restoration and conservation.
- InVEST provided quantitative information on the ecosystem benefits related to water resources (nutrient retention, sediment retention and contribution to base flow) for feasibility studies.
- A portfolio of Nature-Based Solutions was delivered to the Bogota Aqueduct Company to prioritize investments.

TECHNOLOGY AS AN ALLY FOR THE IMPLEMENTATION OF ADAPTATION



IDOM



For further information
IDOM.com

Asier Rodríguez Ochoa
asier.rodriquez@idom.com