



**JOIN US
IN THE RACE
TO A BETTER
WORLD**

NAP EXPO 2023

**Scaling up adaptation solutions,
delivering system transformation
and addressing barriers**

Opportunities from:
Sharm El Sheikh Adaptation Agenda
(SAA) & Race to Resilience Campaign

**Marcia Toledo, Resilience Lead
Climate Champions Team**

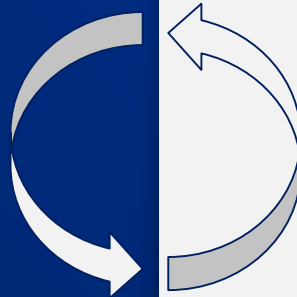
Role and mandate of the **High Level Champions (HLCs)**...

To connect the work of governments with the actions taken by non-state actors, the parties decided to appoint two **High-Level Champions**

The High Level Champions...

... mobilize action among non-state actors (NSAs) to spur even greater ambition and action

...connecting initiatives and coalitions from NSAs with national action plans such as nationally determined contributions (NDCs) to the Paris Agreement.



...jointly with the **Marrakech Partnership**

Under the leadership of the High-Level Champions, the **Marrakech Partnership**...

...supports **implementation of the Paris Agreement**

...enables collaboration between governments and the cities, regions, businesses and investors that must act on climate change

... has 9 thematic areas which are coordinated by organizations designated as **'MP Focal Points'** who in turn collaborate closely with the respective Climate Champions leads

Mobilisation of Non-State/Non Party Actors to scale up adaptation action and enhance resilience is conducted through:

Scale adaptation solutions towards systems transformation: 30 outcome targets by 2030

Sharm el Sheikh Adaptation Agenda

Mobilise and align NSAs to increase resilience of 4bn people by 2030

Race to Resilience Campaign

Accountability & tracking progress

Progress Implementation Reports

Key Stakeholders across all geographies:



Businesses,
Investors



Sub-nationals:
Cities, States, Regions

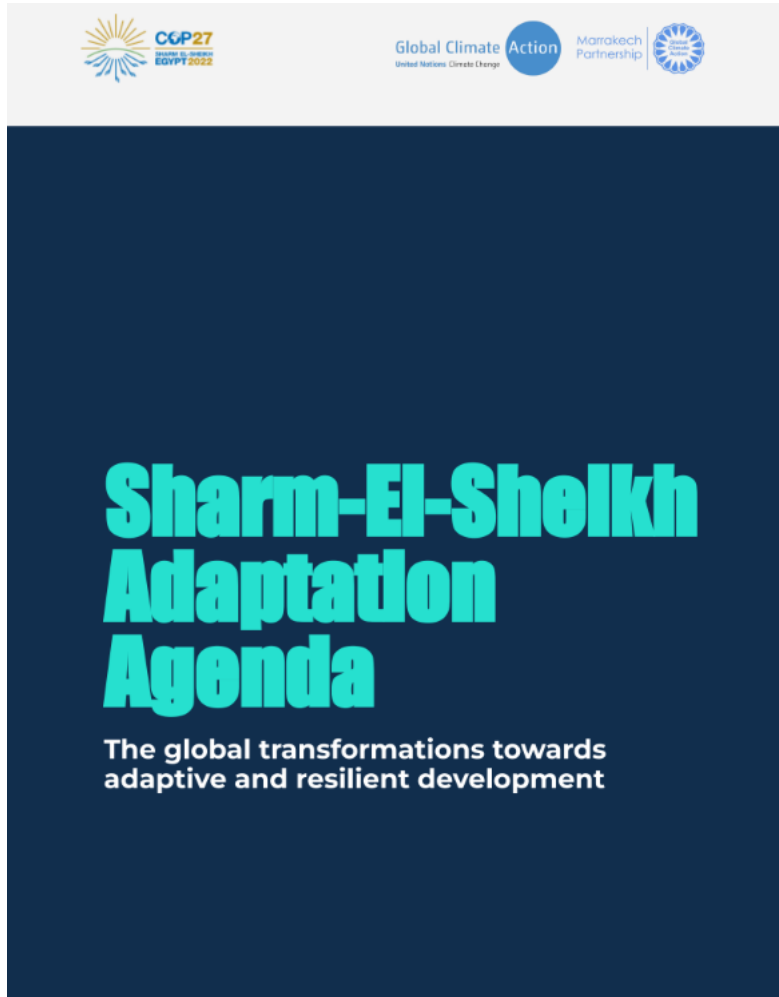


Civil Society
Organizations



Youth

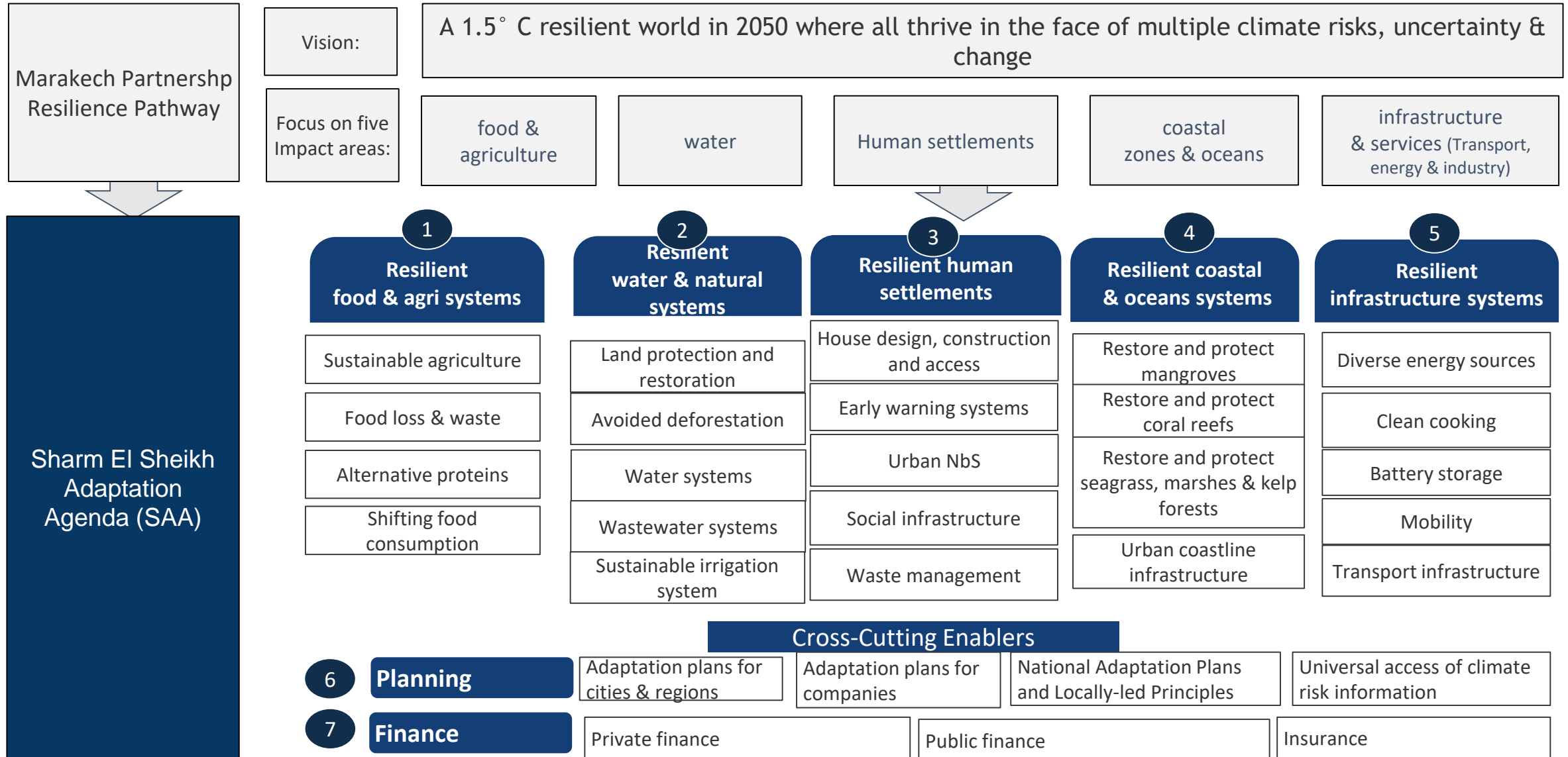
Sharm El Sheikh Adaptation Agenda (SAA)



[Access the Report here](#)

- Vision:** agenda of adaptation solutions that can be scaled for a resilient world
- Convergence:** 30 adaptation solution targets by 2030
- Impact:** shape the narrative for adaptation system transformation
- Rally:** NSAs and governments to deliver on targets across 5 impact systems: food, water, oceans, human settlements and infrastructure and 2 enablers: planning and finance
- Progress:** first ever tracking of progress on adaptation solution implementation
- Report:** annual Implementation Report

SAA: Building from the Marrakech Partnership Resilience Pathway to one consolidated Sharm El Sheikh Adaptation Agenda



Race to Resilience (RtR) Campaign



RACE TO RESILIENCE

Building the resilience of 4 billion people

Putting people and nature first in pursuit of a resilient world where we don't just survive climate shocks and stresses, but thrive in spite of them

[ABOUT THE CAMPAIGN](#) [MEET OUR PARTNERS](#)

- 36 Partner organizations
- 2029 Members
- 175 Countries where solutions implemented
- 264 Regions where solutions implemented
- 559 Cities where solutions implemented

Join us: <https://racetozero.unfccc.int/system/raceto resilience/>

SOLUTIONS



Athens leads fight to counteract extreme heat

Race to Resilience partner, Extreme Heat Resilience Alliance (EHRA) is planning to support



Tanzania: Establishing a voluntary carbon market to restore mangroves and support local communities



Lusaka, Zambia: The African city championing climate resilience through solid waste management (SWM)



Early warning system helps locals respond to extreme weather events in Sudan

RtR Framework



Campaign goal

4 billion vulnerable people made more resilient by 2030



Aggregate Pledges (up to 2030)

Quantitative Impact Metrics

Expected direct impacts on beneficiaries, collected through global metrics and annual survey at different engagement levels

Cross-cutting outcomes on Resilience Attributes: changes fostered on key conditions (capacities, resources, knowledge, coordination..) which indirectly foster resilience and empower transformations, collected through periodical metric surveys and narratives.

Qualitative Impact Metrics



Aggregate Outcomes (annual)

Achieved and validated direct impacts, at different engagement levels, updated every year since 2022 to 2030



Inputs

(1) Partner initiatives; (2) initiative members (companies, investors, NGOs, cities, community groups, knowledge organizations); (3) member projects; (4) funding; and (5) resilience-building actions

Summary

Scaling adaptation action is advanced when:

- Exchange of solutions local to local; global impact
- Clarity on a shared adaptation agenda; practical, tangible actionable solutions
- Understanding the different but complementary roles of multiple actors; businesses, financiers, cities, regions, CSOs. Synchronicity
- Equity, diversity and inclusion are at the core
- Common metrics frameworks help track progress
- Capacity and strong MEL implemented by actors
- Radical collaboration and recognition of the ambition loop to support national agendas

Key opportunities to continue addressing barriers:

- Accelerating business transformation for adaptation, mobilising private finance for adaptation
- Universal access to climate risk information
- Amplifying the opportunities to invest in solutions that scale adaptation, mobilising finance sector for adaptation
- Capacity strengthening in MEL across all types of actors
- Governance settings and policy shifts needed to accelerate adaptation solutions



**JOIN US
IN THE RACE
TO A BETTER
WORLD**

Thank You!

Marcia Toledo, Resilience Lead
marciatoledo@climatechampions.team

