

4.2 NAP COUNTRY PLATFORM

Country: Ecuador

Date: 30/03/2023

Time: 11:00 - 12:30 AM

PNA
PLAN NACIONAL DE ADAPTACIÓN
E C U A D O R



SPRACC
SISTEMA DE INFORMACIÓN, PROYECCIÓN, RIESGO CLIMÁTICO
Y ADAPTACIÓN AL CAMBIO CLIMÁTICO



NAP Overview



Vision



The National Adaptation Plan towards Climate Change is a management instrument that responds to the high climate risk in Ecuador and it is protected by law, State policies as well as international agreements.

General Objective



To contribute to the integration of adaptation to climate change in a national, local and sectoral development planning; as well as the identification and reduction of current and future climate risk of social, economic and environmental systems that are vulnerable to the effects of climate change.

Ecuador's Adaptation Management

PRIORITIZED SECTORS



Productive and strategic sectors



Natural Heritage

Food Security, agriculture



Water Heritage

Human Settlements



Health



MAIN CLIMATE THREATS IN ECUADOR

HEAVY RAINFALL

FROST

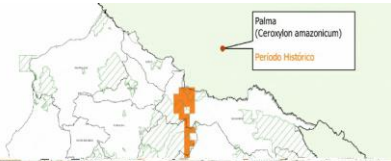
DROUGHT

HIGH TEMPERATURES

RESULTS: Ecuador's Climate Sectoral Risk Assessment

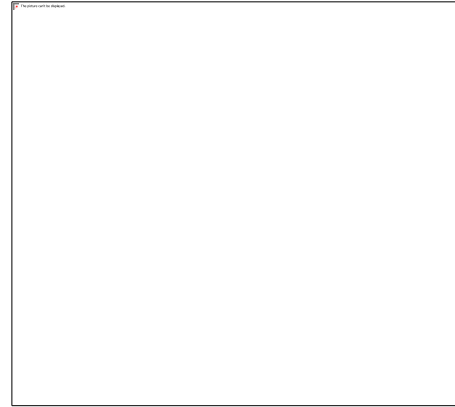
Natural Heritage

Risk of preservation of endemic vascular species (1971-2021)



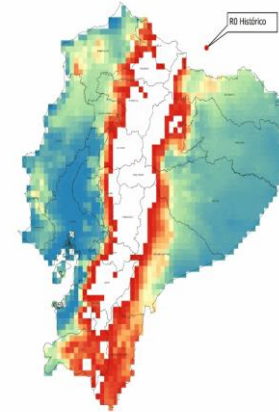
Water Heritage

Extensión modelada 35336 km² (62%)
de 56824,38 km² (cierre de 50 cuencas)



Health

Greater possibility of proliferation of dengue in regions in red under adverse conditions of climate change



Human Settlement

The cities analyzed have more than 70% of the population in a state of precariousness, and in the near future it is expected that flood zones will increase.

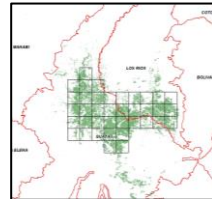
Ciudad de Chone - Histórico - 50% funcionamiento del canal.



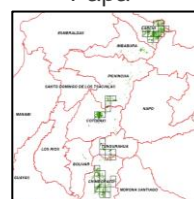
Food Security Agriculture(SAG)

990.000 hectáreas (maíz amarillo duro, arroz, papa, maíz suave seco, fréjol seco y caña de azúcar)
39% de la producción agrícola del país.

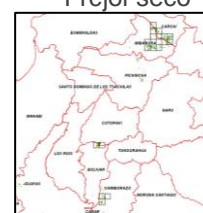
Arroz



Papa



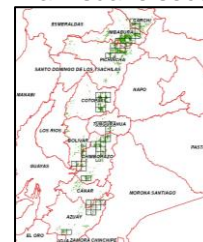
Fréjol seco



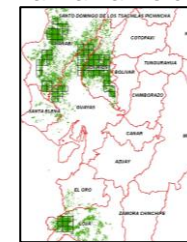
Caña de azúcar



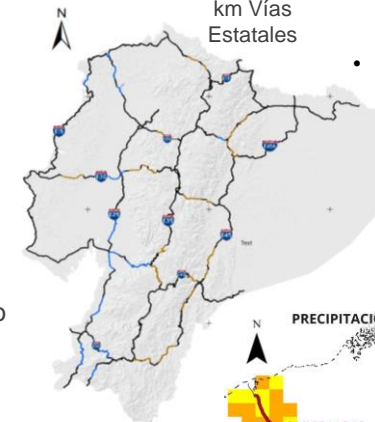
Maíz suave seco



Maíz amarillo duro

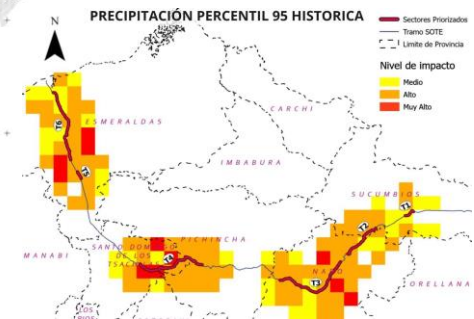


1587 km de 6027 km Vías Estatales

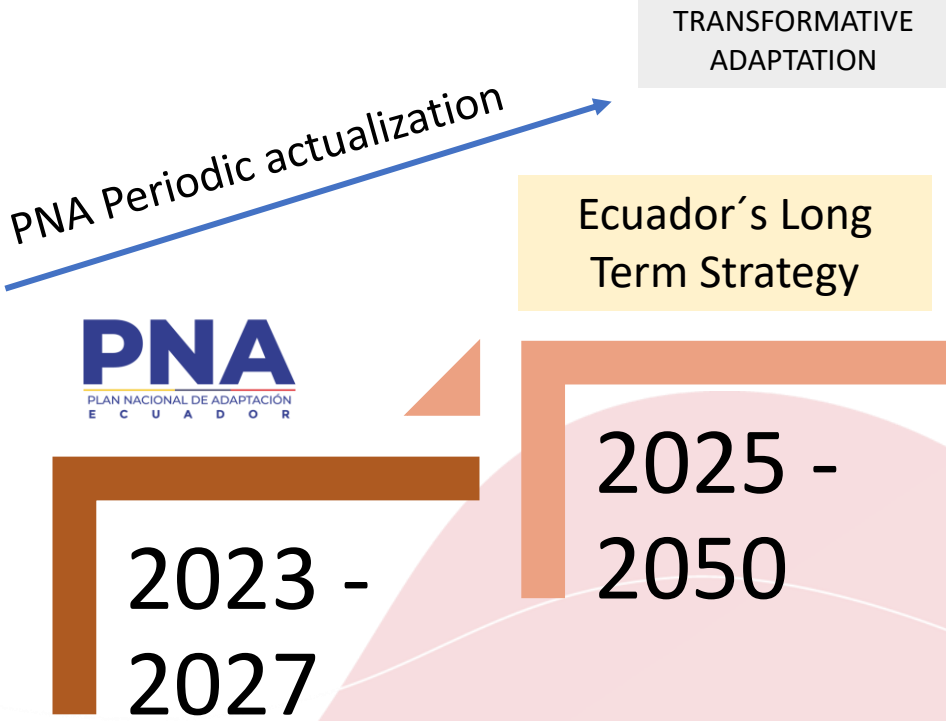


Strategic and Productive Sectors

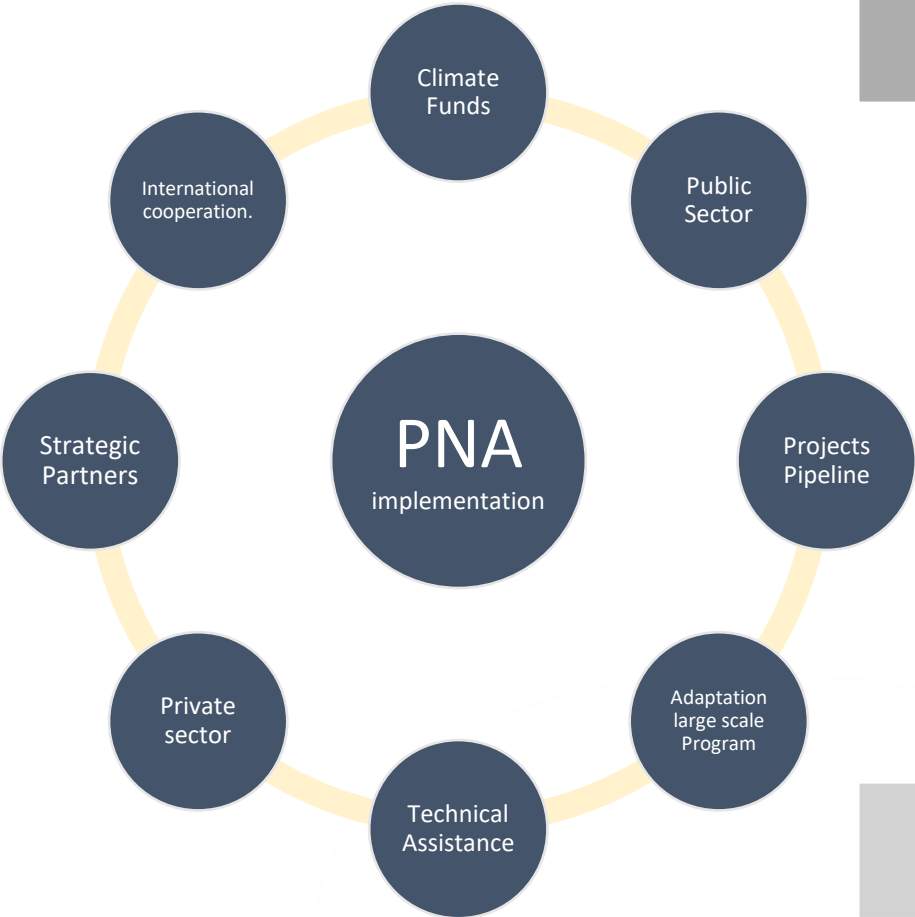
In future scenarios, higher flows and runoff are expected that can trigger floods and landslides. In the Amazon, an increase in the floodable area is expected up to 42%.



Implementation strategy



Resource mobilization for implementing the NAP



Generate links with national and international actors that promote new sources of financing.

Promote and strengthen lines of research towards international donors.

Promote, strengthen, and take advantage of alliances with the PP, academia, and other actors as a fund management strategy.

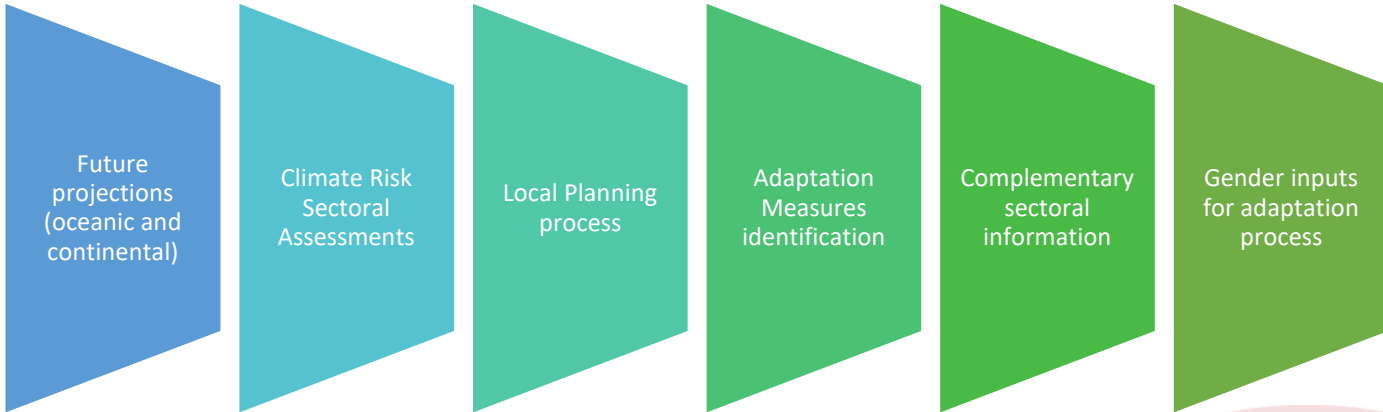
Strengthen the capacities of national, local and sectoral actors, in financial sustainability.

Manage and mainstream the PNA as part of national and local planning.

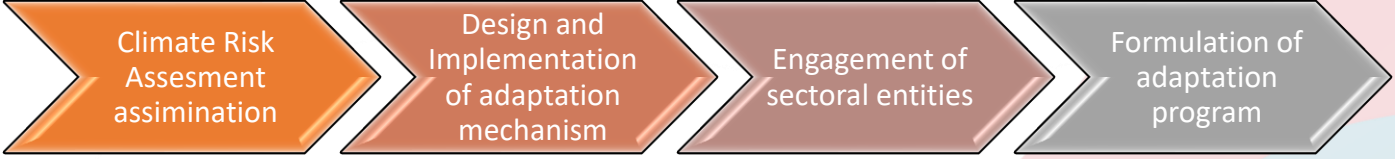
Next Steps



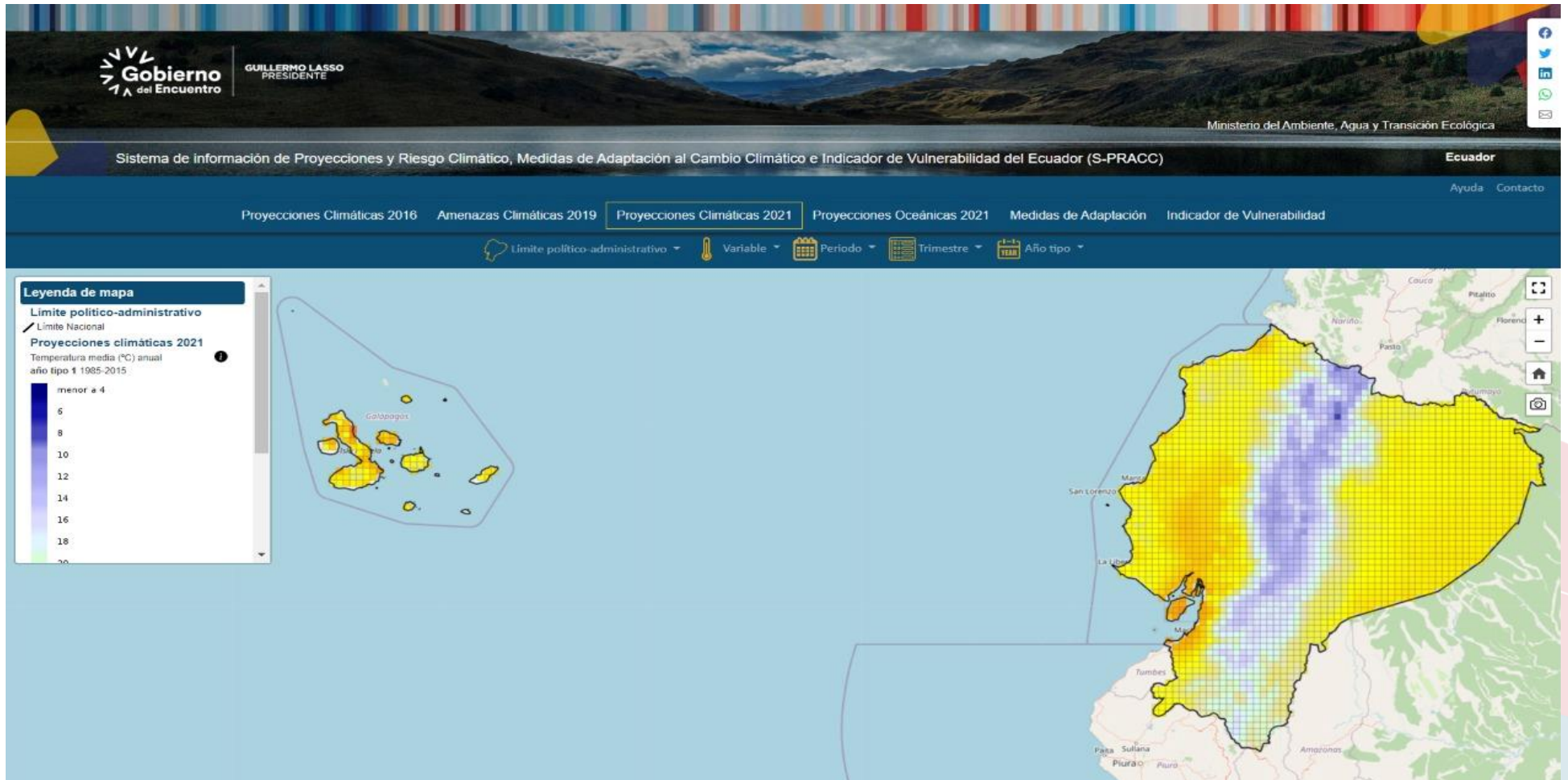
DEVELOPED TOOLS
AND INFORMATION
THROUGH NAP



FIRST STEPS TOWARDS THE IMPLEMENTATION OF THE NAP



SPRACC



Thank you

speaker's contact details

Twitter: @KarinaBarrera1, @Rosaana_gb, @Ambiente_Ec

LinkedIn:

[linkedin.com/in/karinabarrera/](https://www.linkedin.com/in/karinabarrera/)

[linkedin.com/in/rosa-ana-gonzález-89872780/](https://www.linkedin.com/in/rosa-ana-gonzález-89872780/)