

Developing the Climate Science Basis for Climate Action

NAP Expo 2022

Gaborone, 22-26 August 2022

**Ilaria Gallo, Kevin Horsburgh and
Jorge Luis Vazquez-Aguirre**

WEATHER CLIMATE WATER
TEMPS CLIMAT EAU



WMO OMM

World Meteorological Organization
Organisation météorologique mondiale



**GREEN
CLIMATE
FUND**

Enhancing the Climate Science Basis of GCF Funded Activities (2018-2021)

An aerial photograph of a coastal city, likely in South Asia, featuring a large river that winds through the urban landscape. A prominent bridge spans the river, with several vehicles visible on it. The city is densely packed with buildings, and a beach is visible in the distance. The sky is clear and bright.

Climate science information helps determine what action is needed as a result of a country's changing situation.

It ensures that the linkages between climate impacts, climate action and societal benefits are fully grounded in the best available climate science.

Climate Science Project Outputs

Guidance document

Guide for Developing the Climate Science Basis for GCF Funded Activities

Climate Information Platform (CIP)

A web-based data access platform – providing access to CMIP and CORDEX projections and indicators worldwide.

Tools & data sources

Climpact

A software package to calculate over 70 climate indices from historical daily temperature and precipitation relevant for the health, agriculture, water and other climate-sensitive sectors.

Country examples

Evidence-based climate action solutions for agriculture, health, water, energy, fisheries, forestry, coastal zone management, DRR and other sectors from St. Lucia, the Democratic Republic of the Congo, Cabo Verde and Cambodia.



Platform for structured access to analyzed data output and technical resources



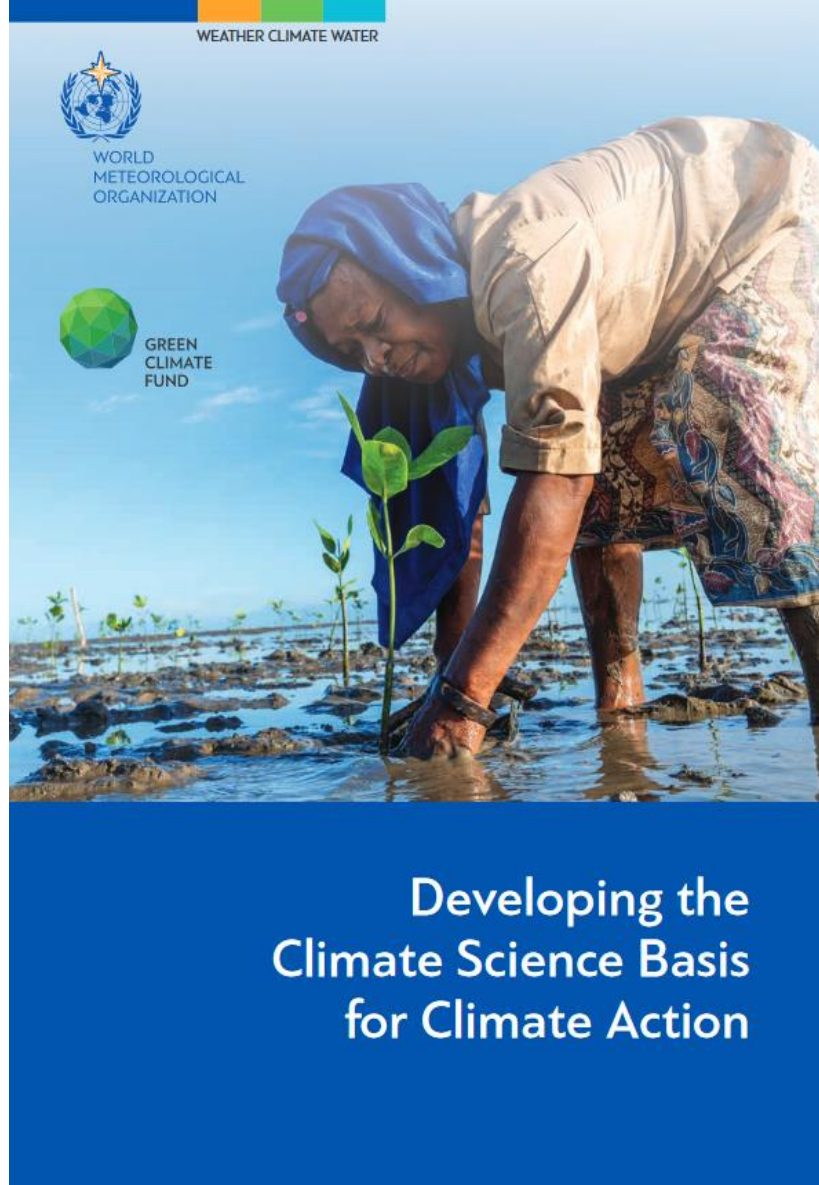
Methodology field-testing, regional consultations and expert advice



Hands-on implementation and capacity development at country level

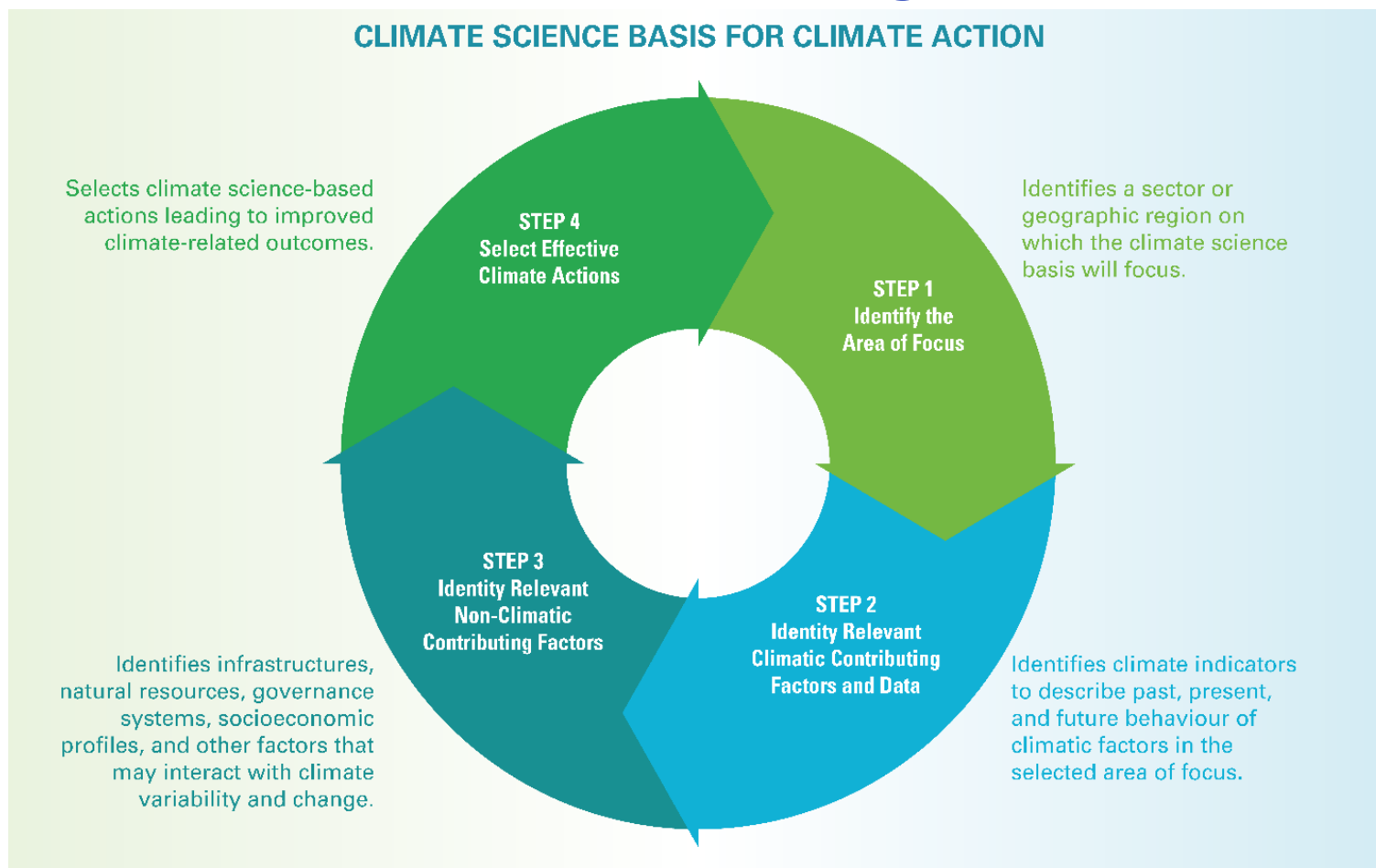


Networking with national to international partner organizations



Developing the Climate Science Basis for Climate Action

The climate science information guidance document



WMO-GCF, 2021

The guide outlines four **steps** for developing a climate science basis for GCF-funded activities, particularly **adaptation investments**. The methodology can be extended to support interventions that climate-proof mitigation actions.

Applications:

- GCF projects
- Projects funded by other climate finance sources
- Nationally Determined Contributions
- National Adaptation Plans (NAPs)

Benefits and applications of the methodology

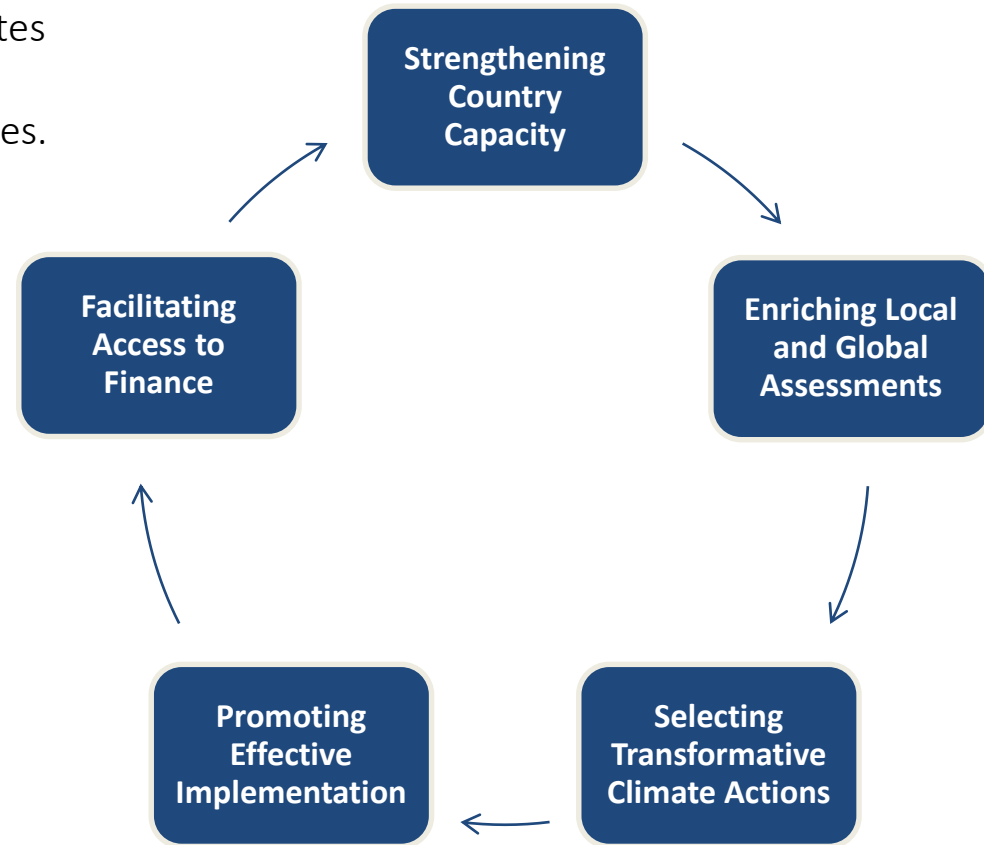
Strengthening Country Capacity for data preparation and climate analysis - Equips country experts for more advanced, subsequent work with less international support.

Enriching Local and Global Assessments - Aggregates scientific findings concerning national and local conditions into WMO, IPCC, and UNFCCC processes.

Selecting Transformative Climate Actions - Addresses climate variability and change, and relevant socioeconomic factors.

Promoting Effective Implementation - Including strengthening hydro-met systems and associated services.

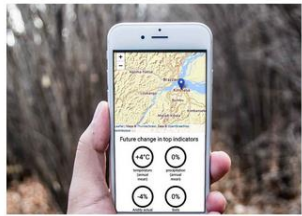
Facilitating Access to Finance – Makes climate investments attractive to investors, since interventions are based on scientific evidence.



Tools & Data Sources

Climate Information Platform (CIP)

A web-based data access platform that provides access to the most reliable hydro-climatic data and technical resources for climate science inputs relevant for GCF submissions.



Site-specific report

Get an instant climate change overview for any location world-wide.



Data Access Platform

Download pre-calculated climate indicators and explore interactive maps and graphs.



Climpact

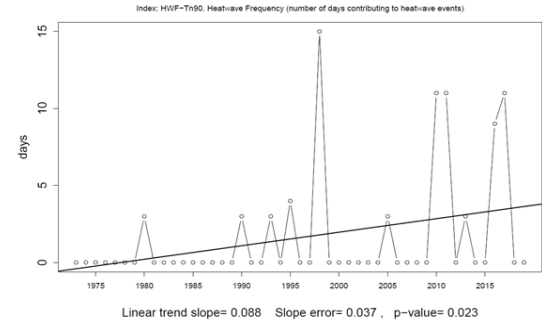
Calculate climate indicators using your own weather and climate data.

1933 05 22	0.0	25.7	10.6
1933 05 23	0.0	24.4	9.7
1933 05 24	2.0	18.9	7.1
1933 05 25	16.6	15.2	9.6
1933 05 26	0.2	16.6	9.3
1933 05 27	0.0	17.5	7.9
1933 05 28	0.0	17.8	7.2
1933 05 29	0.0	18.9	7.7
1933 05 30	0.1	17.7	7.3
1933 05 31	0.0	18.8	5.0
1933 06 01	0.0	18.8	5.1
1933 06 02	0.0	23.8	5.4
1933 06 03	0.0	26.0	10.4
1933 06 04	0.0	27.2	12.1
1933 06 05	0.0	27.3	12.1
1933 06 06	0.0	28.5	9.8
1933 06 07	0.0	26.0	14.0
1933 06 08	0.0	24.9	12.2
1933 06 09	1.2	21.8	12.0
1933 06 10	4.3	16.0	11.6
1933 06 11	0.0	16.0	10.8
1933 06 12	8.9	17.7	11.0
1933 06 13	0.0	21.6	11.0

climpact-sci.org

Quickly calculate climate indices using your own weather and climate data

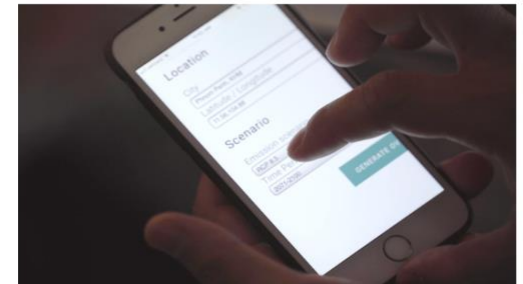
Station: HEWANORRA [14.021°N, -60.992°W]



Annex I. Guidance on Methods, Tools and Data

Version 8 September 2021

Developing the Climate Science Basis for Climate Action

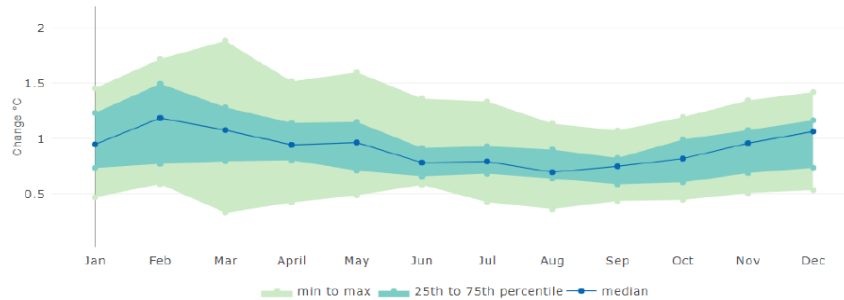


Source: WMO, 2020



Temperature (monthly mean)

Change compared to historical period.



Indicator: Temperature (annual mean), Time period: 2011–2040, Historical period: 1981–2010, RCP 8.5, Model: CORDEX Africa Ensemble Mean, Model results for an area covering the location: Praia, Ilhas do Sotavento (14.92, -23.51)





NAP EXPO
2022
Transformations
to adapt



Gaborone, Botswana
August 24, 2022



WORLD
METEOROLOGICAL
ORGANIZATION



GREEN
CLIMATE
FUND



United Nations
Framework Convention on
Climate Change



CLIMPACT
<https://climpact-sci.org>

Quickly calculate climate indices using your own weather and climate data.

SMHI Climate Information Platform
<https://climateinformation.org>

Get an instant climate change overview for your location, get climate indicators, and explore interactive maps and graphs.

Contact:
climatescience@wmo.int





WMO OMM

World Meteorological Organization
Organisation météorologique mondiale



Thank you!

For any support requests or inquiries:

climatescience@wmo.int