

NAP HAITI

NAP EXPO 2022

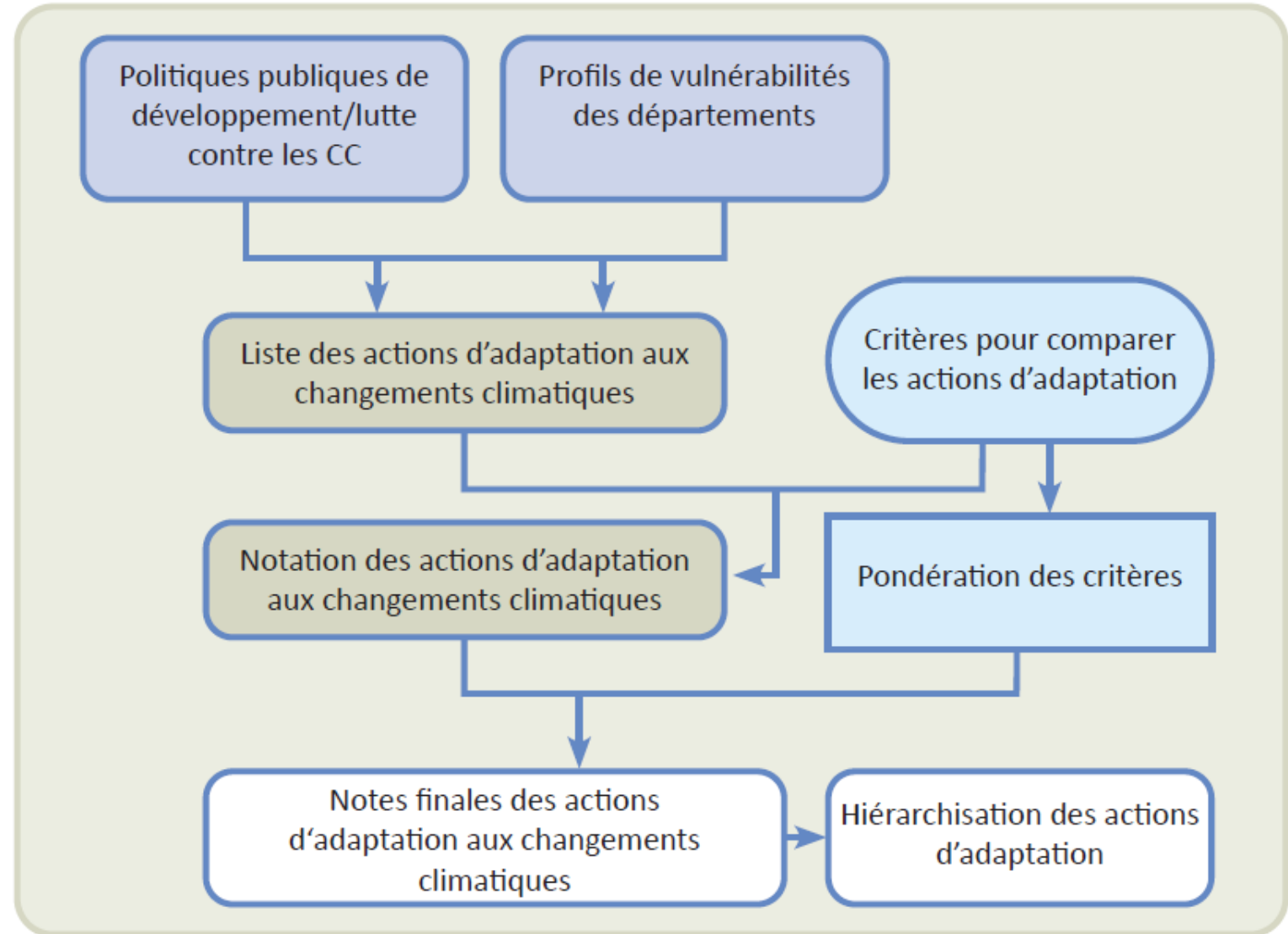


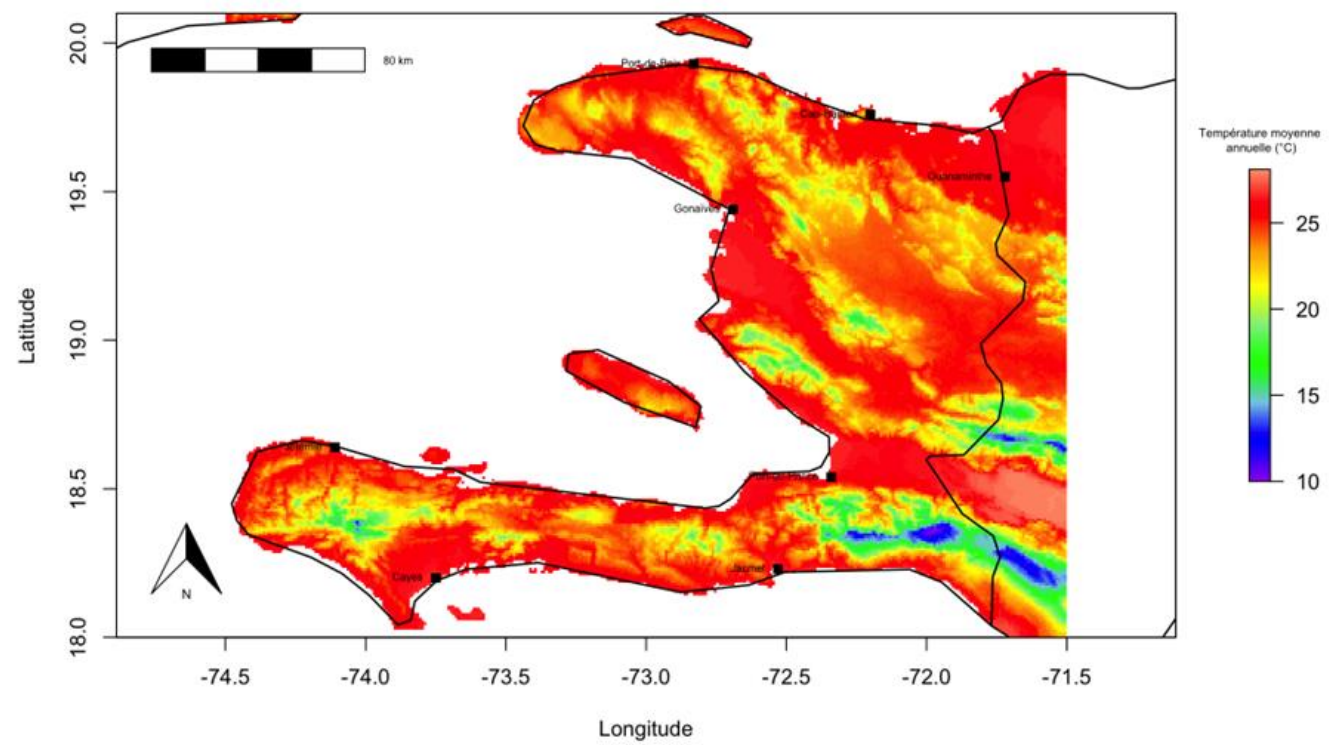
Plan National d'Adaptation au Changement Climatique (PNA)

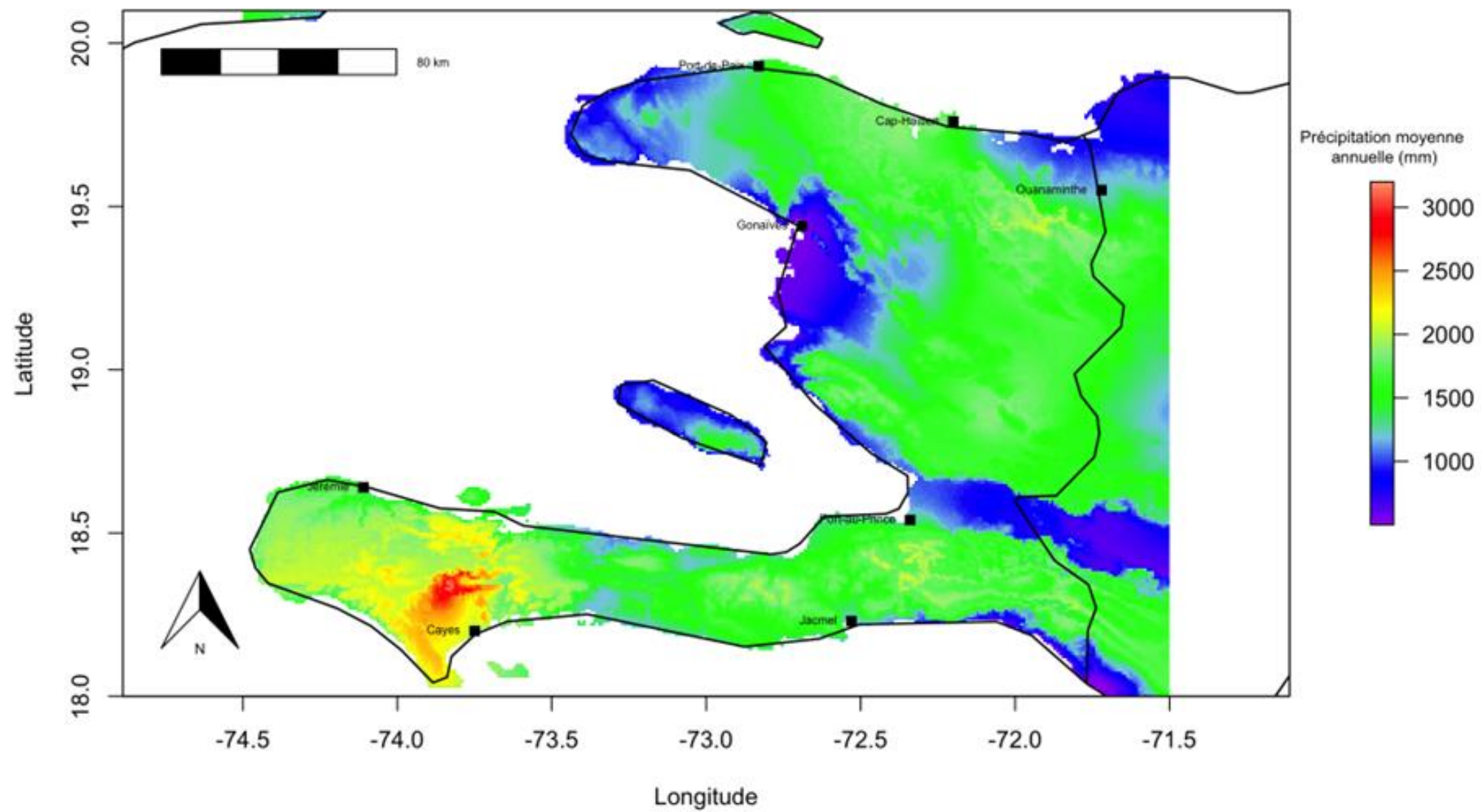
HAÏTI / 2022 - 2030

NAP process of Haiti 2019 – 2022

Prioritization process of adaptation actions







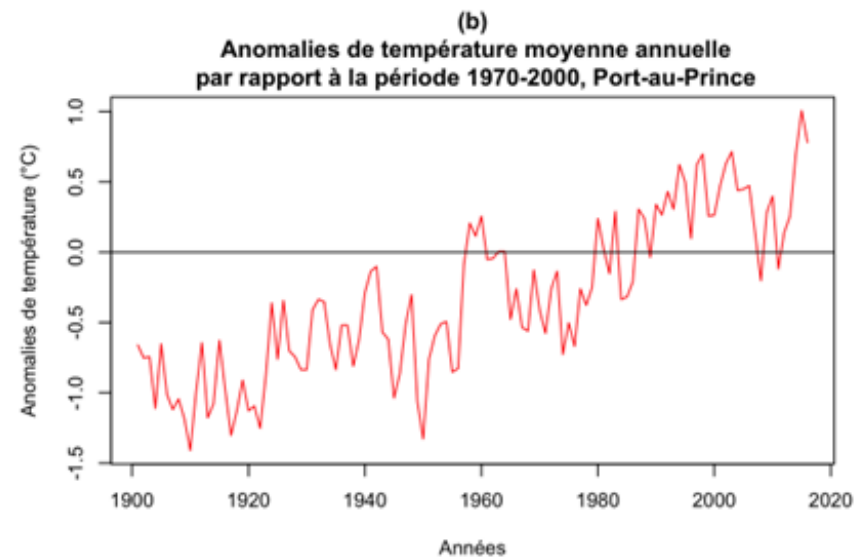
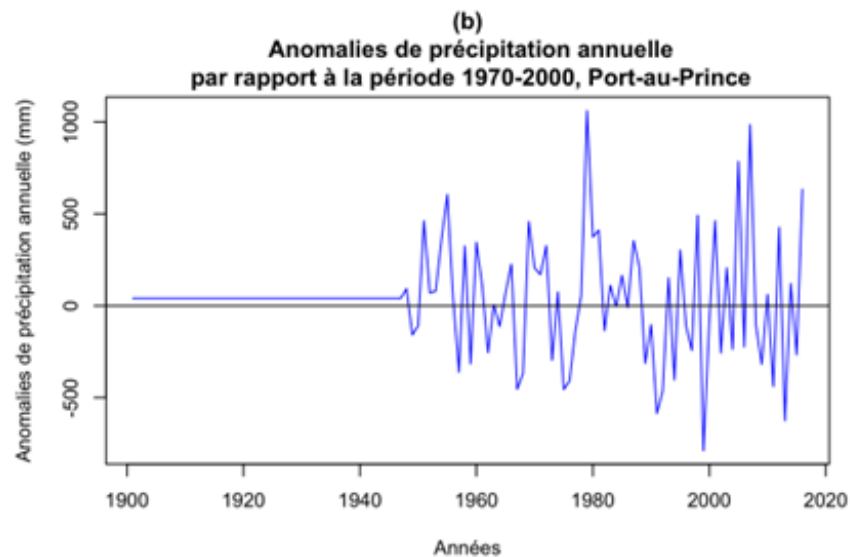
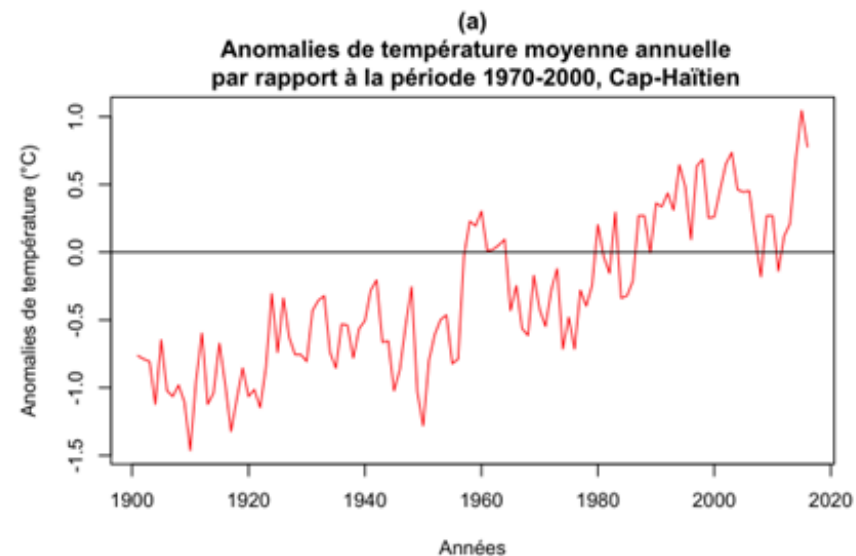
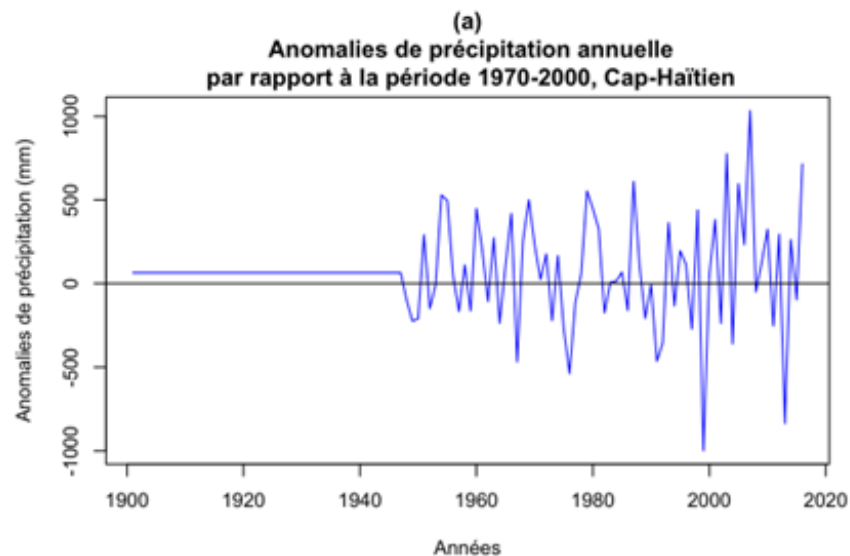
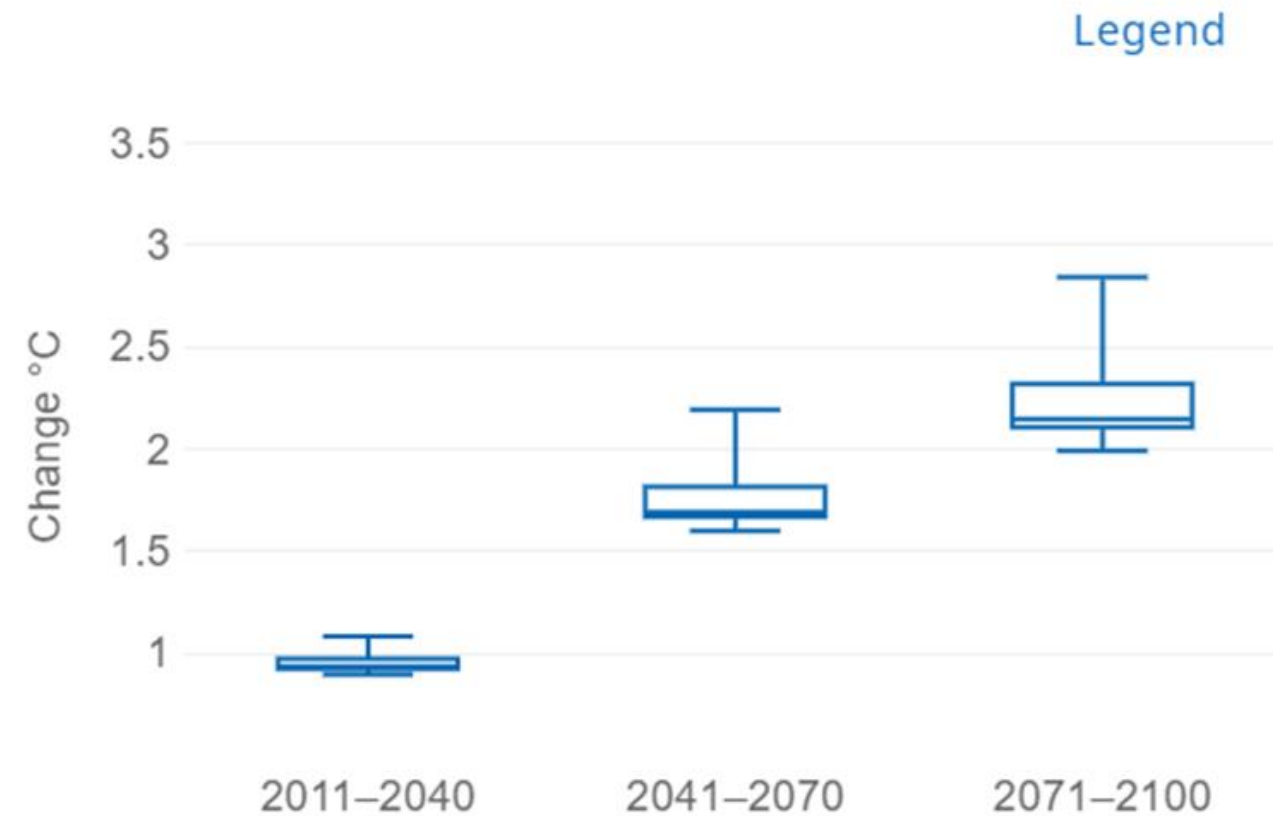


Figure 12. Scénarios de changement de température moyenne annuelle pour Port-au-Prince

Temperature (annual mean)

Change compared to historical period.



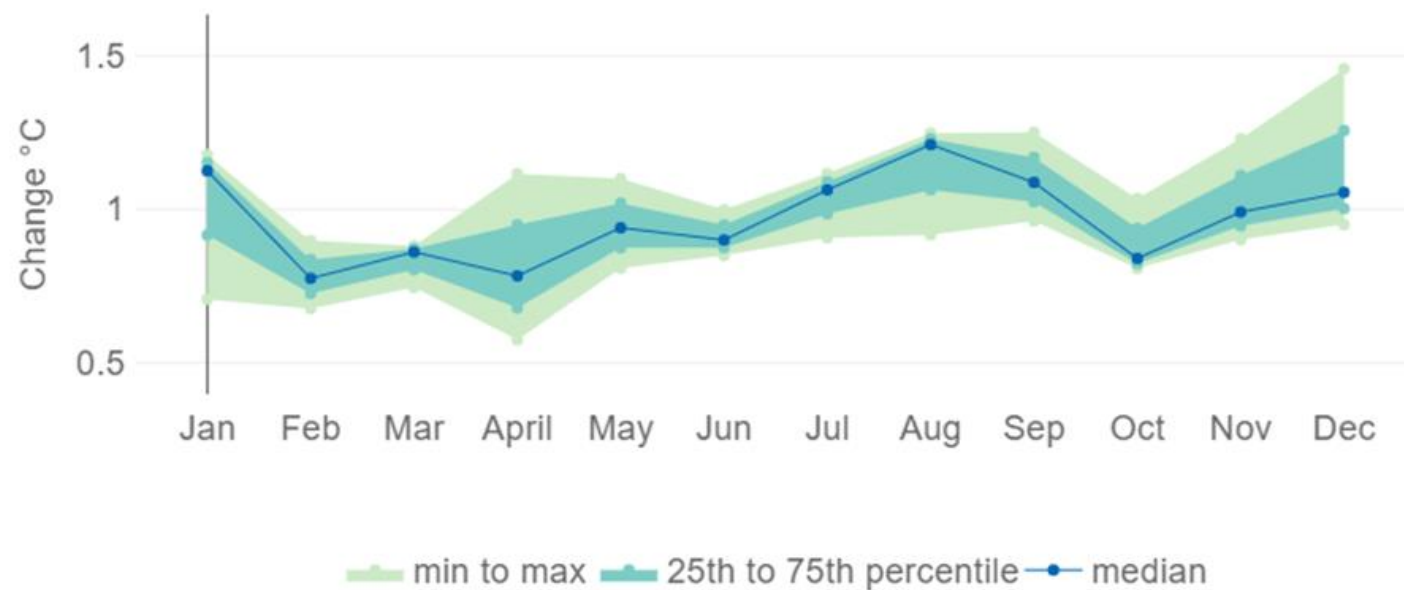
Indicator: Temperature (annual mean), Time period: 2011–2040, Historical period: 1981–2010, RCP 4.5, Model: CORDEX Central America Ensemble Mean, Model results for an area covering the location: Port-au-Prince, Haiti (18.54, -72.32)



Figure 13. Scénarios Changements de température moyenne mensuelle anticipés pour Port-au-Prince

Temperature (monthly mean)

Change compared to historical period.

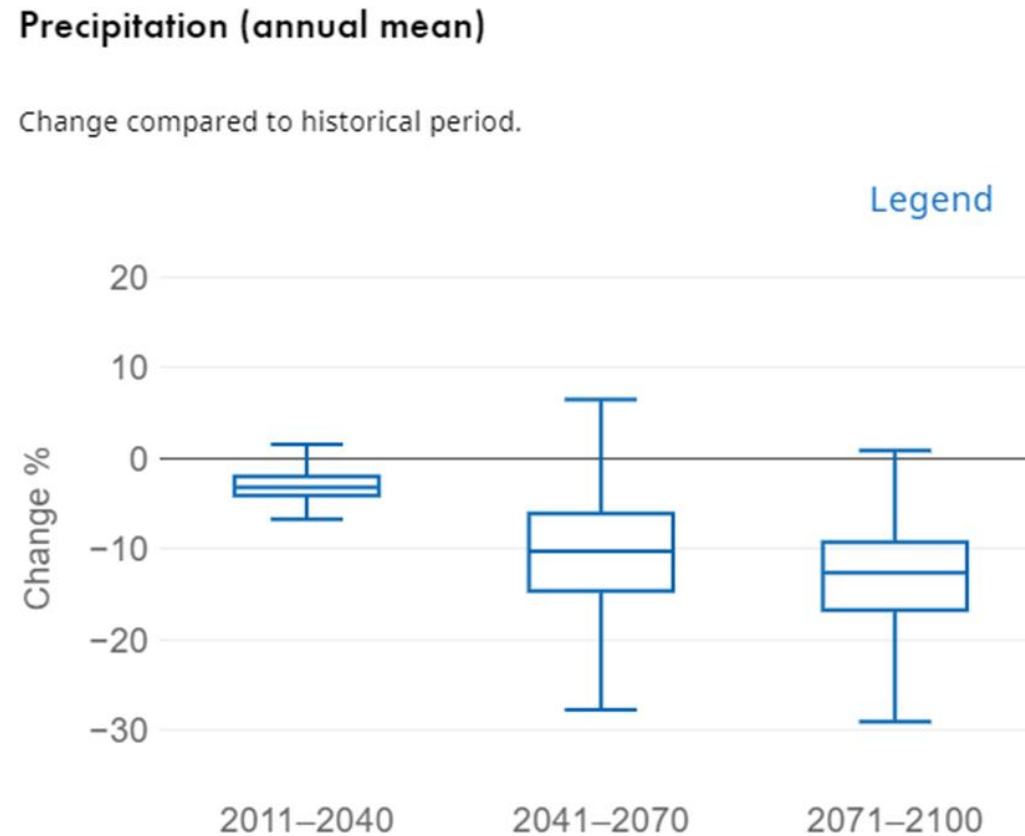


Indicator: Temperature (annual mean), Time period: 2011-2040, Historical period: 1981-2010, RCP 4.5, Model: CORDEX Central America Ensemble Mean, Model results for an area covering the location: Port-au-Prince, Ouest (18.54, -72.33)
Reference: <https://climateinformation.org> (date: 2022-05-01)



WMO OMM

Figure 14. Scénarios de changements de précipitation moyenne annuelle pour Port-au-Prince



Indicator: Precipitation (annual mean), Time period: 2011–2040, Historical period: 1981–2010, RCP 4.5, Model: CORDEX Central America Ensemble Mean, Model results for an area covering the location: Port-au-Prince, Ouest (18.54, -72.33)
Reference: <https://climateinformation.org> (date: 2022-05-01)

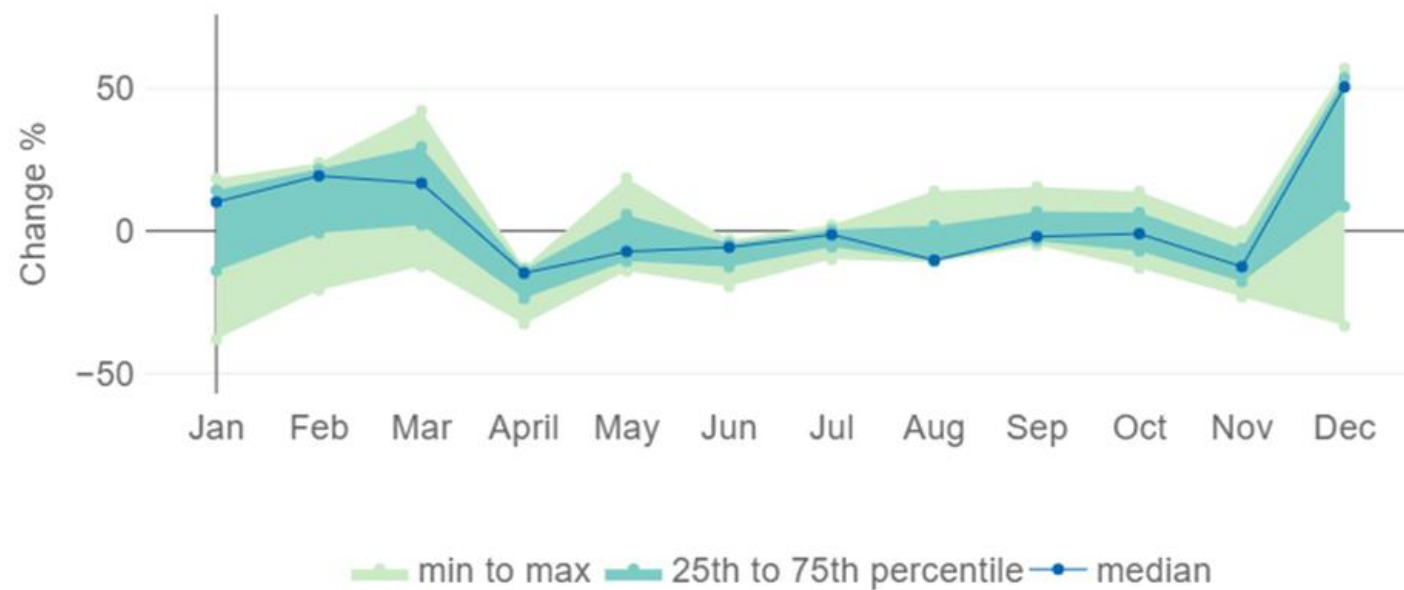


WMO OMM

Figure 15. Scénarios de changements de précipitation moyenne mensuelle pour Port-au-Prince

Precipitation (monthly mean)

Change compared to historical period.



Indicator: Precipitation (annual mean), Time period: 2011–2040, Historical period: 1981–2010, RCP 4.5, Model: CORDEX Central America Ensemble Mean, Model results for an area covering the location: Port-au-Prince, Ouest (18.54, -72.33)
Reference: <https://climateinformation.org> (date: 2022-05-01)



WMO OMM