



National Adaptation Plan

A pathway towards climate resilience

2022 NAP EXPO – BOTSWANA

Sea level rise, coastal erosion and storm surges

Kushaal Raj

Head of Climate Change and International Cooperation

Ministry of Economy

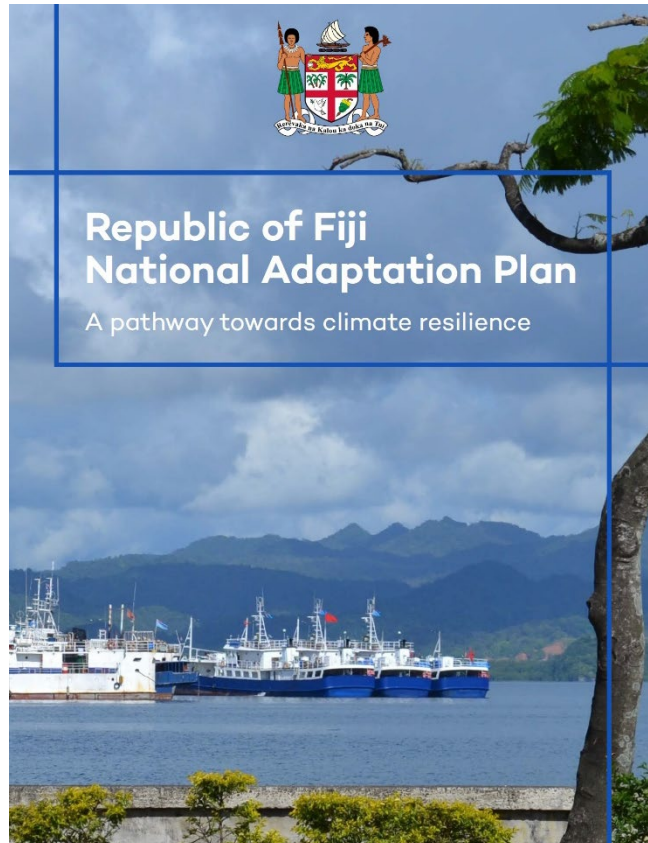
Fiji



The NAP Process



NAP Overview



- Overarching process addressing climate change vulnerability.
- Build adaptive capacity and resilience, and integrate environmental and climate risk, into development planning processes.
- Inter-ministerial sectoral approach.
- 160 prioritised adaptation measures.
- 5 components addressing adaptation barriers.
- 5 components addressing important sectors to the economy and society.
- 5 year life cycle

System Focus Areas

Requirements for paradigmatic change

System component

Climate Info. Services
& Management

Horizontal integration

Vertical Integration

Climate Change
Awareness &
Knowledge

Resource Mobilisation

Description

Improves capacity to generate, manage, disseminate, and use climate change information.

Mainstreams climate change issues into national-level development planning processes.

Integrates climate change issues into sub-national development planning processes which then inform national processes.

Enhances understanding by increasing the flow of relevant information to relevant adaptation stakeholders.

Enhances the accumulation and coordination of resources to support the transition to a climate-resilient economy.

Outcome

Supports stakeholders to anticipate environmental and climate events before they occur.

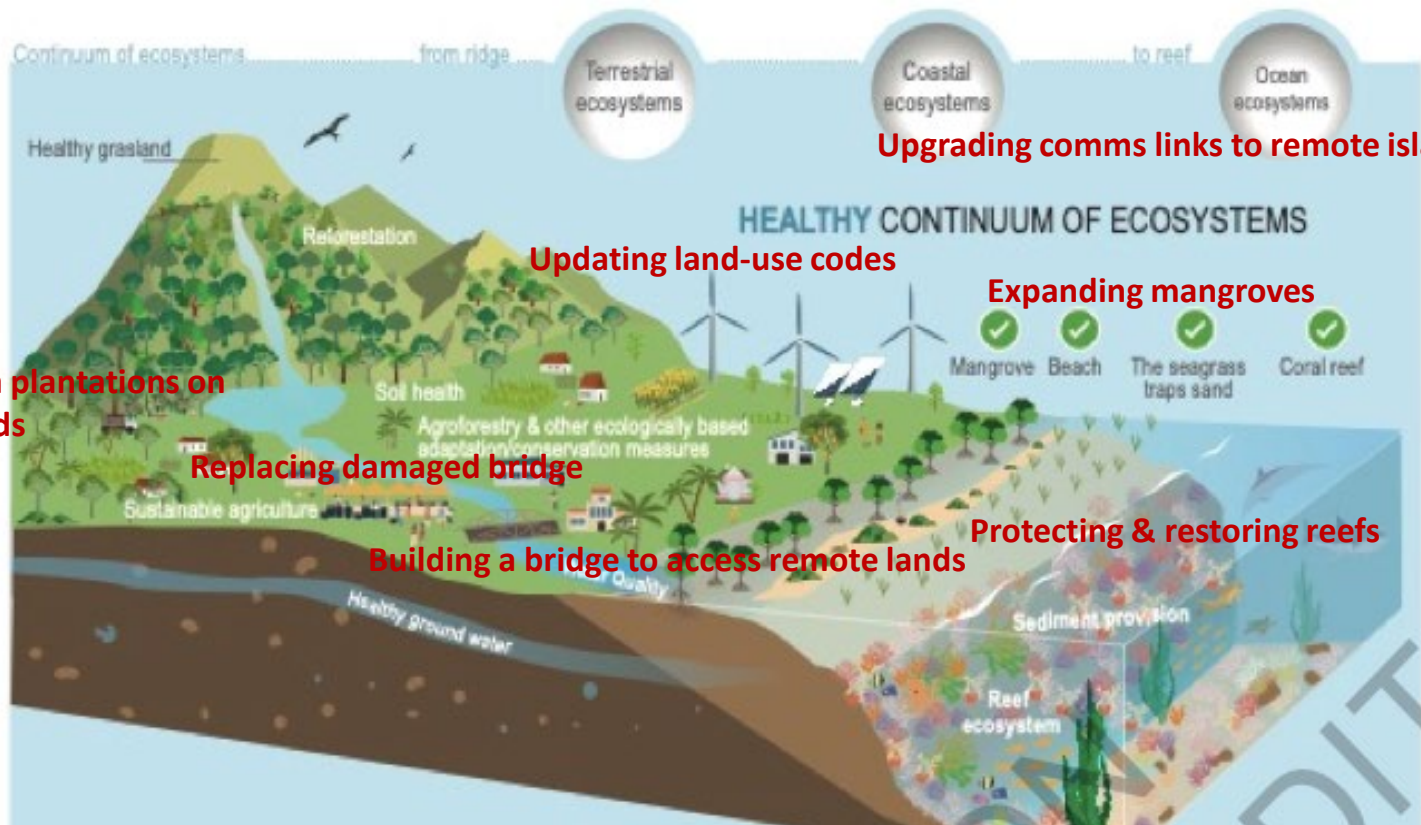
Increased robustness of planning processes and help to prevent maladaptive outcomes.

Reduces vulnerability by tackling environmental and climate risks where they are experienced.

Empowers stakeholders to engage in decision-making and understand relevant potential adaptation measures

Improves the amount of resources available and the way available resources are utilised.

Adaptation Measures in Fiji



Next Steps

1. NAP Steering Committee Meeting – 20 July
2. Pool of Users established in Fiji's Adaptation Registry
3. Rollout with Fijian Taskforce on the Relocation and Displacement
4. NAP Review – NAP Costing Methodology as an output
5. NAP Investment Plan
6. Coastal Mapping
7. Climate Impact Assessment Framework for all new infrastructure development – CCA