



# A Framework for Transformational Climate Action and Evaluation

*Neha Sharma*

*NAP EXPO*

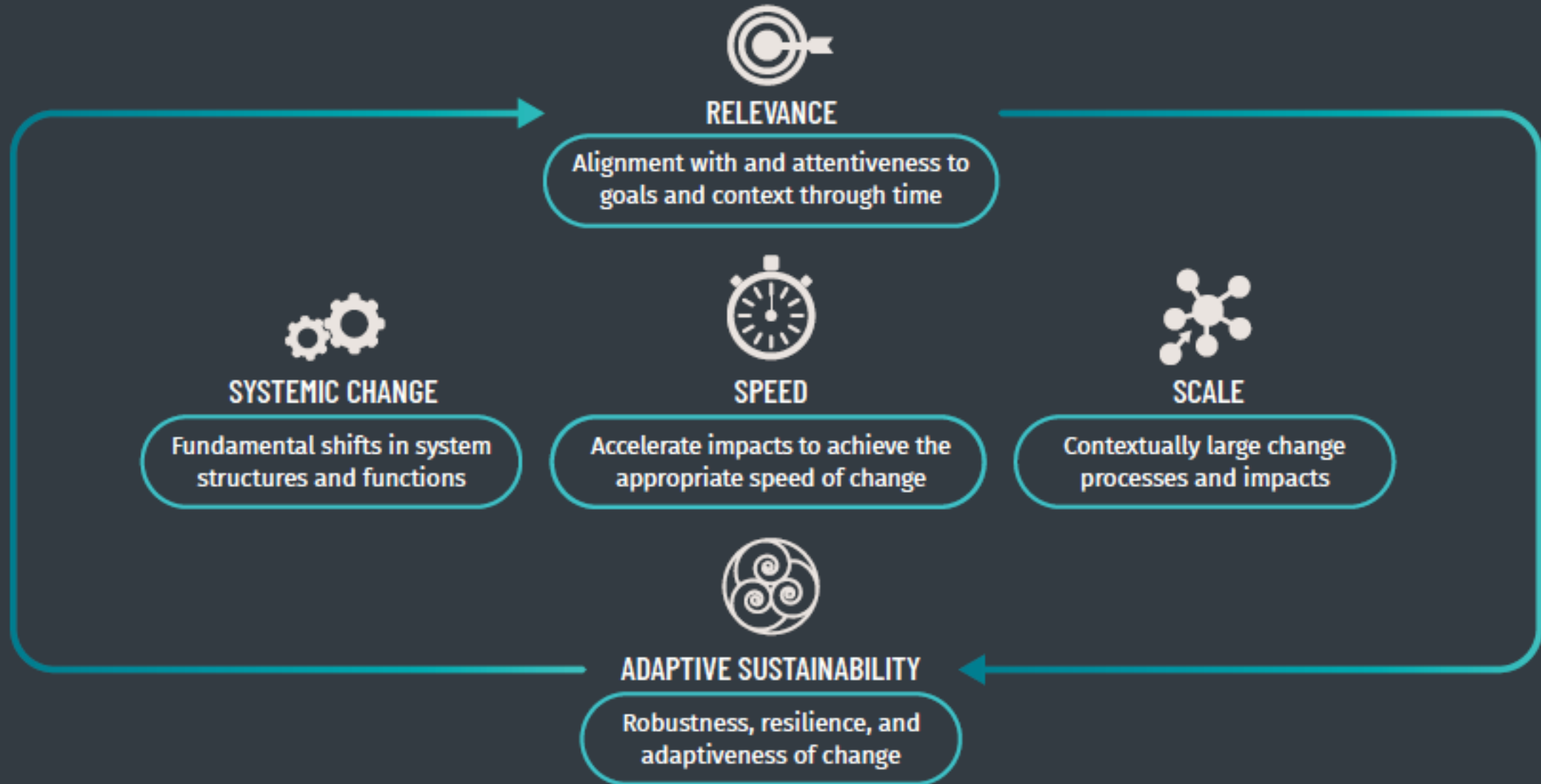
**24 August 2022**

# Transformational Change Definition

Fundamental change in systems relevant to climate action, with large-scale positive impacts that shift and accelerate the trajectory of progress towards climate-neutral, inclusive, resilient, and sustainable development pathways.



# Transformational Change Dimensions



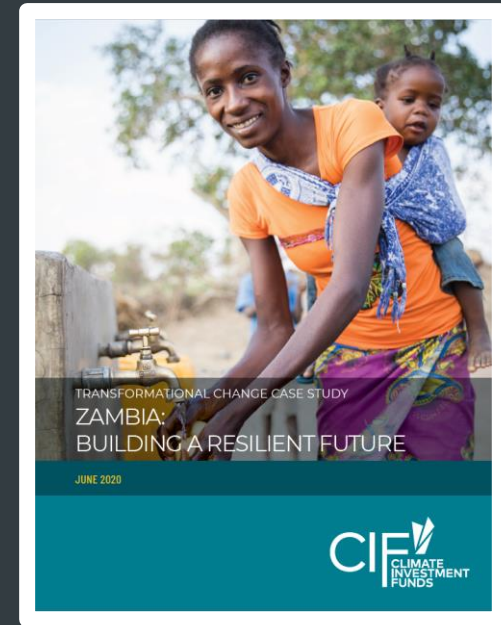


# Relevance

*Alignment with and attentiveness to goals and context through time*

Relevance is an action-oriented framing dimension that illuminates the ongoing, dynamic relationship between desired goals, context, and opportunity.

Keywords: **Context, Goals, Alignment**



## DIMENSIONS OF TRANSFORMATIONAL CHANGE: STAGE OF ADVANCEMENT

	EARLY	INTERIM	ADVANCED
Relevance			██████████
Systemic Change		██████████	
Scale		██████████	
Sustainability	██████████		

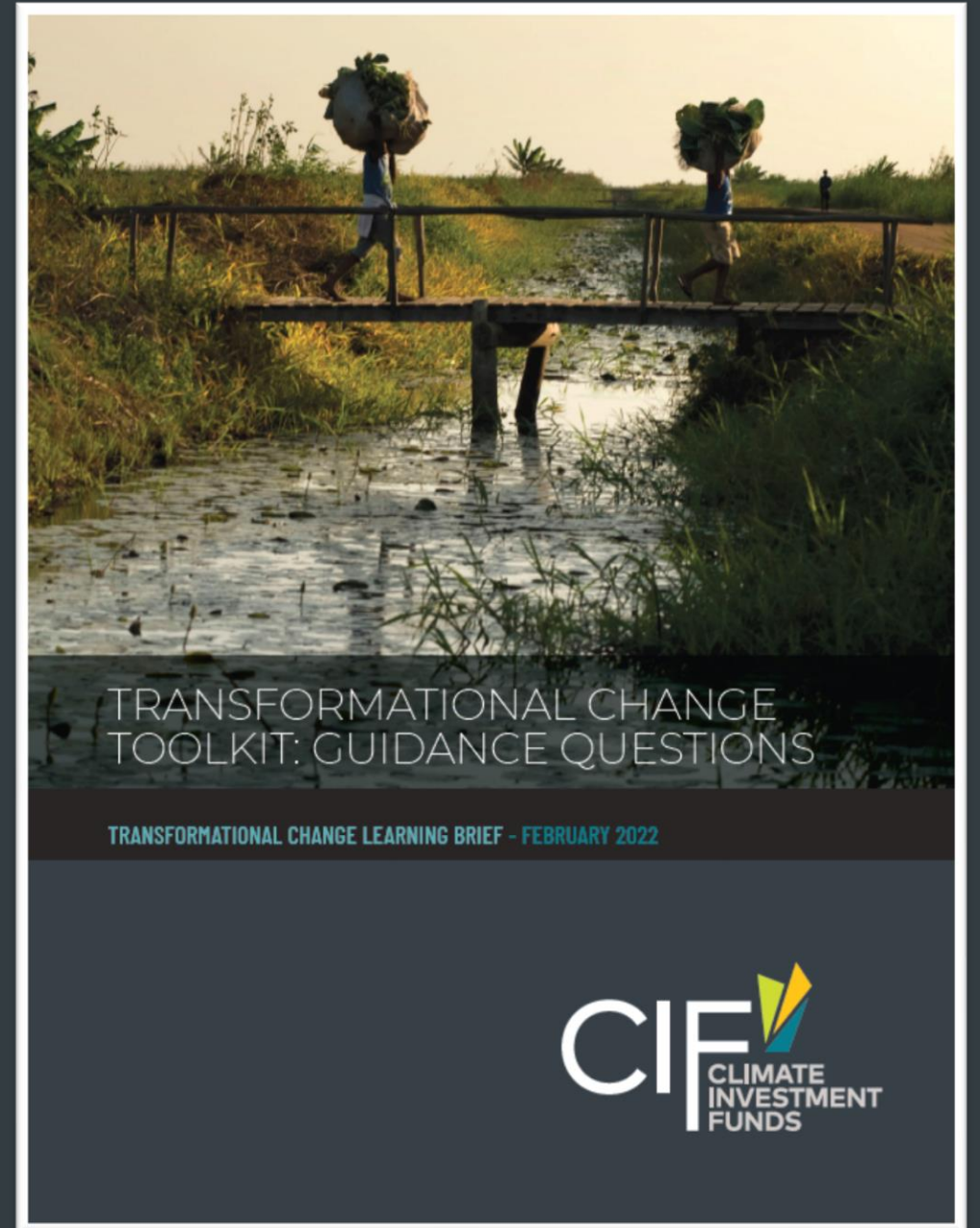


# Systemic Change

*Fundamental shifts in system structures and functions*

Systemic changes involve shifting the structures, functions, and interrelationships of the elements within and between the systems by removing entrenched barriers, opening new opportunities or pathways, and shifting power dynamics.

Keywords: **Systems, Barriers and Pathways, Power**



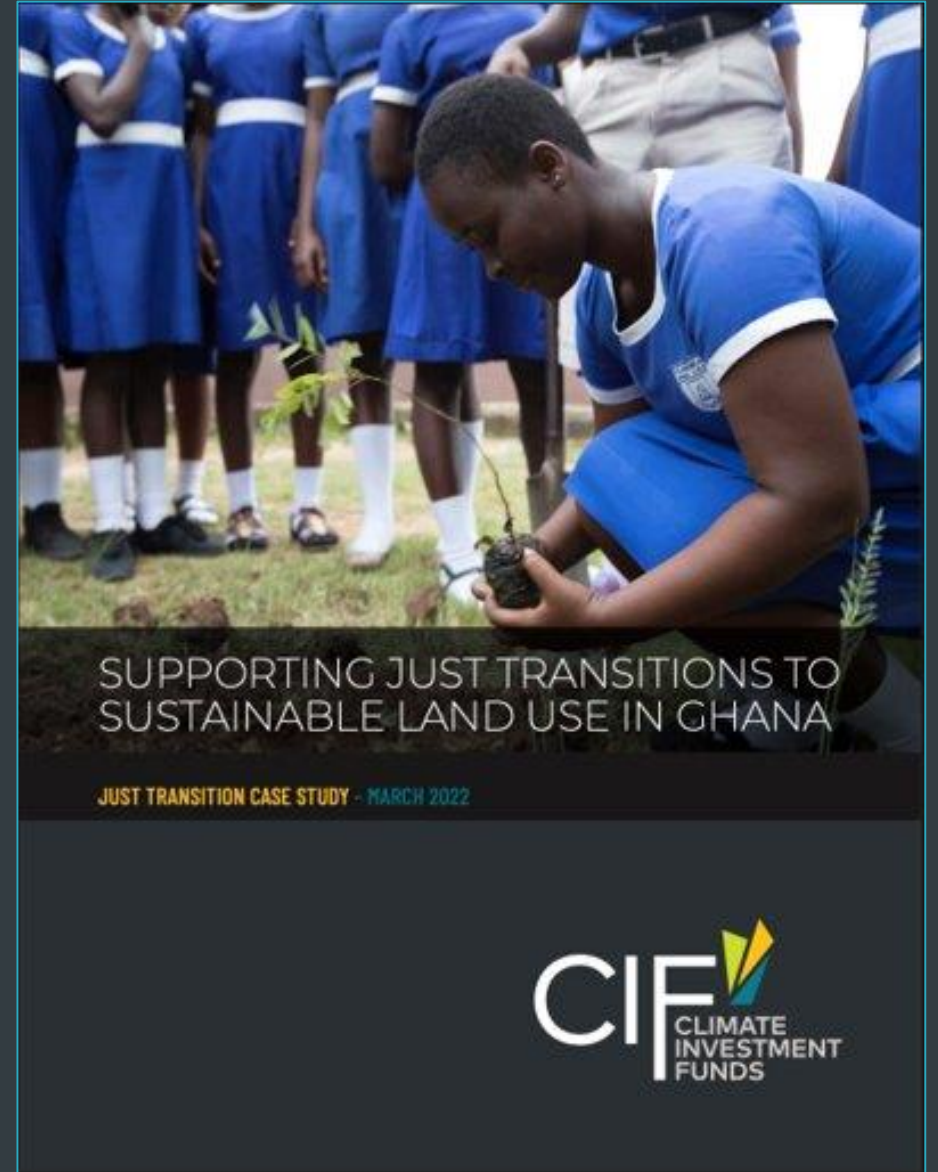


# Speed

*Accelerate or decelerate impacts to achieve the appropriate speed of change*

The urgency of the climate crisis necessitates the consideration of acceleration and speed of change. At the same time complexity and vulnerability requires that speed is adjusted to ensure just transitions.

Keywords: **Acceleration, Complexity and Inclusivity**





# Scale

*Contextually large transformational change processes and impacts*

Scale involves expansion (or contraction) within and across levels—scaling up, out, or down at increasing magnitudes. Across policy, number of people, geographic areas, levels of understanding, etc.

Keywords: **Vertical scaling**, **Horizontal scaling**, **Depth scaling**





# Adaptive Sustainability

*Robustness, resilience, and adaptiveness of change*

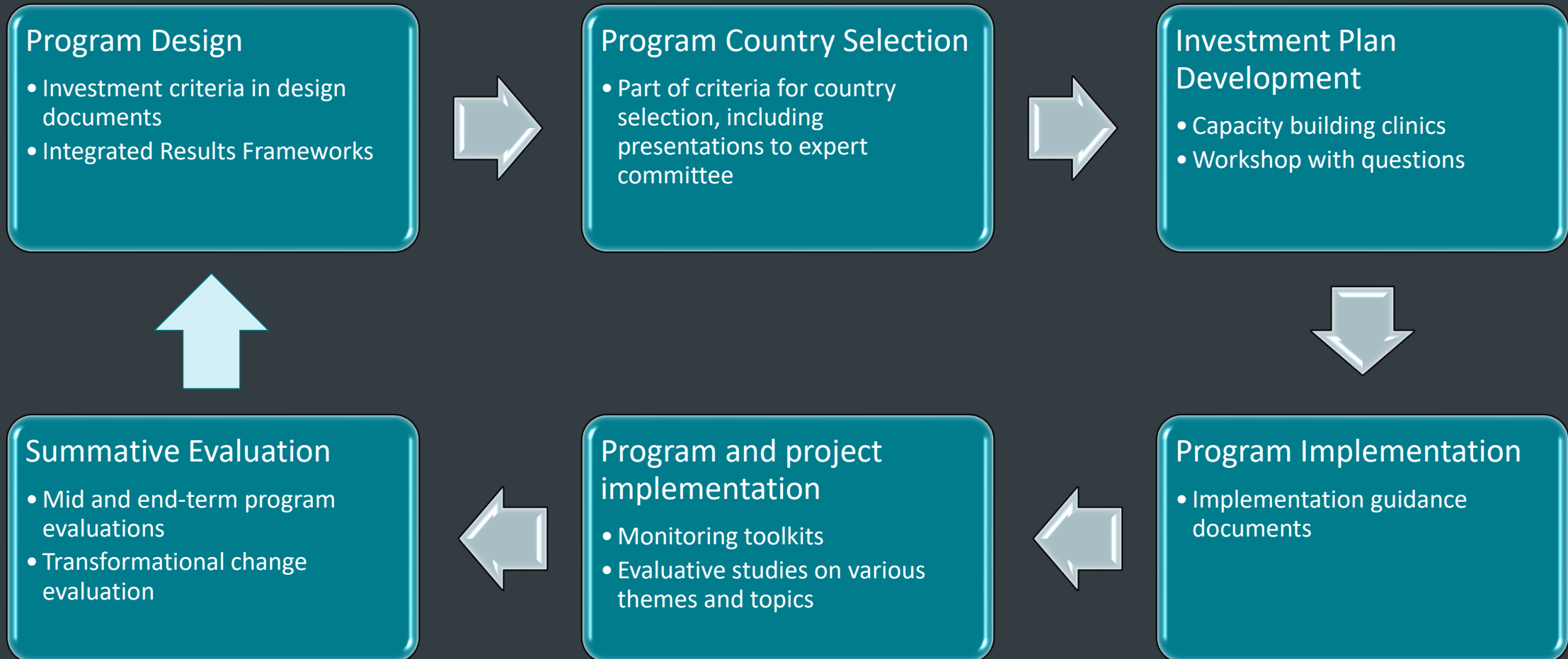
Adaptive sustainability recognizes the importance for people, systems, and change processes to have the capacity to be responsive to changing circumstances and evolving needs over time.

Keywords: **Capacity, Flexibility, Resilience**





# Incorporating Transformational Change in New CIF Programs



# Using Guidance Questions to Contextualize Transformational Change

RELEVANCE	What	What fundamental changes and large-scale positive impacts, relevant to climate action, need to be brought about within a specific context?
	How	<ul style="list-style-type: none"> <li>• <b>Context:</b> How is the intervention relevant to global, national and local priorities?</li> <li>• <b>Proposed action:</b> How is the intervention logic (theory of change) relevant to accelerating the coal transition?</li> <li>• <b>Alignment:</b> How is the intervention aligned to ecological, social and economic priorities and integrating them?</li> </ul>
SYSTEMIC CHANGE	What	What are the systems where change is needed, and what change is required between and within these systems?
	How	<ul style="list-style-type: none"> <li>• <b>System Identification:</b> How does the intervention related to ACT identify and define the system, including system boundaries?</li> <li>• <b>Barriers and Pathways:</b> How does the intervention remove entrenched barriers and open new pathways for systemic changes required to ensure ACT?</li> <li>• <b>Power:</b> How does the intervention elevate the influence of beneficiaries and other stakeholders, including marginalized and vulnerable groups, to contribute to and benefit from an ACT?</li> </ul>
SPEED	What	What will it take to achieve the transformational change goal in a time frame that is aligned with the urgency and complexity of the climate crisis?
	How	<ul style="list-style-type: none"> <li>• <b>Acceleration:</b> How does the intervention accelerate progress toward an ACT?</li> <li>• <b>Complexity and Inclusivity:</b> How does the intervention ensure adequate and inclusive engagement with complex and contested issues associated with an ACT?</li> </ul>
SCALE	What	What contextually large changes need to be scaled within and beyond the project intervention?
	How	<ul style="list-style-type: none"> <li>• <b>Depth scaling:</b> How does the intervention deepen the understanding of an ACT and support for it?</li> <li>• <b>Vertical scaling:</b> How does the intervention support scaling pathways within and across policy and implementation processes associated with an ACT?</li> <li>• <b>Horizontal scaling:</b> How does the intervention expand the number of people or geographic areas engaged with or benefitting from an ACT?</li> </ul>
ADAPTIVE SUSTAINABILITY	What	What relevant changes are sustained and advanced beyond the intervention?
	How	<ul style="list-style-type: none"> <li>• <b>Flexibility:</b> How does the intervention enable experimentation and flexibility, including the ability to learn and course-correct when necessary?</li> <li>• <b>Capacity:</b> How does the intervention build capacity of stakeholders and institutions to advance and sustain change?</li> <li>• <b>Resilience:</b> How does the intervention insulate change from backsliding due to internal and external pressures or shocks and enable recovery when required?</li> </ul>
RELEVANCE AND ADAPTIVE SUSTAINABILITY	What	<ul style="list-style-type: none"> <li>• What mechanisms are in place to ensure climate-neutral, inclusive, resilient, and sustainable development pathways?</li> <li>• What mechanisms are in place to advance the adaptive capacity of stakeholders to continuously enhance the relevance of an initiative and its impacts as the system changes?</li> </ul>

RELEVANCE	What	
	How	
SYSTEMIC CHANGE	What	
	How	
SPEED	What	
	How	
SCALE	What	
	How	
ADAPTIVE SUSTAINABILITY	What	
	How	
RELEVANCE AND ADAPTIVE SUSTAINABILITY	What	