

Für Mensch & Umwelt

**Umwelt
Bundesamt**



KomPass
Kompetenzzentrum
Klimafolgen und Anpassung



Regional NAP Expo Asia, Seoul – 12.09.17

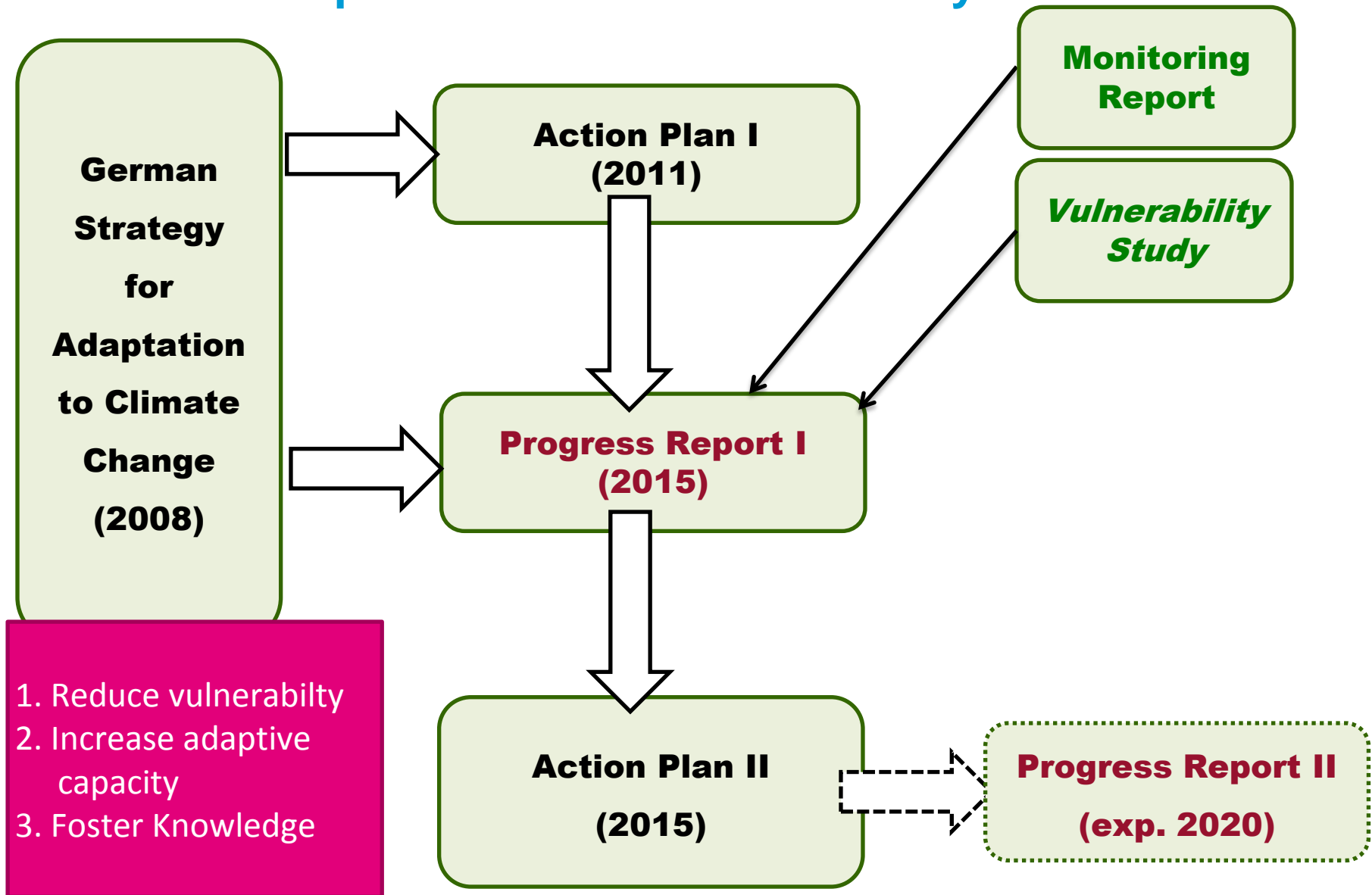
Enhancing the effectiveness and sustainability of NAPs through monitoring and evaluation

Dr. Thomas Abeling, Dr. Petra van R  th
Climate Impacts & Adaptation, German Environment Agency

Overview of Presentation

- National Adaptation Process in Germany
- Monitoring and Evaluation Process
- (Some) Lessons Learned

National Adaptation Process in Germany

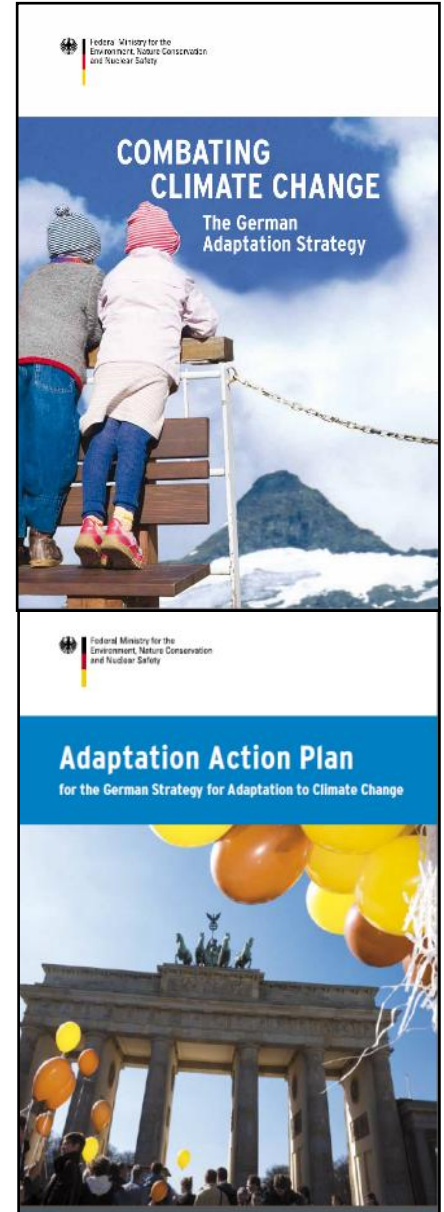


Governance Structure

Steering (horizontal + vertical)

- Interministerial working group: almost all Federal Ministries, chaired by Fed. Ministry of Environment
- Formal Working group with Environment Ministries of all German Federal States

Interministerial WG agreed frequent reporting on adaptation monitoring (4 y), vulnerability assessments (5 – 7 y). Revision of NAS and Adaptation Action Plan is planned every 5 years.



Overview of Presentation

- National Adaptation Process in Germany
- **Monitoring and Evaluation Process**
- (Some) Lessons Learned

Evaluation as a mandatory requirement of the NAP progress report (2015)

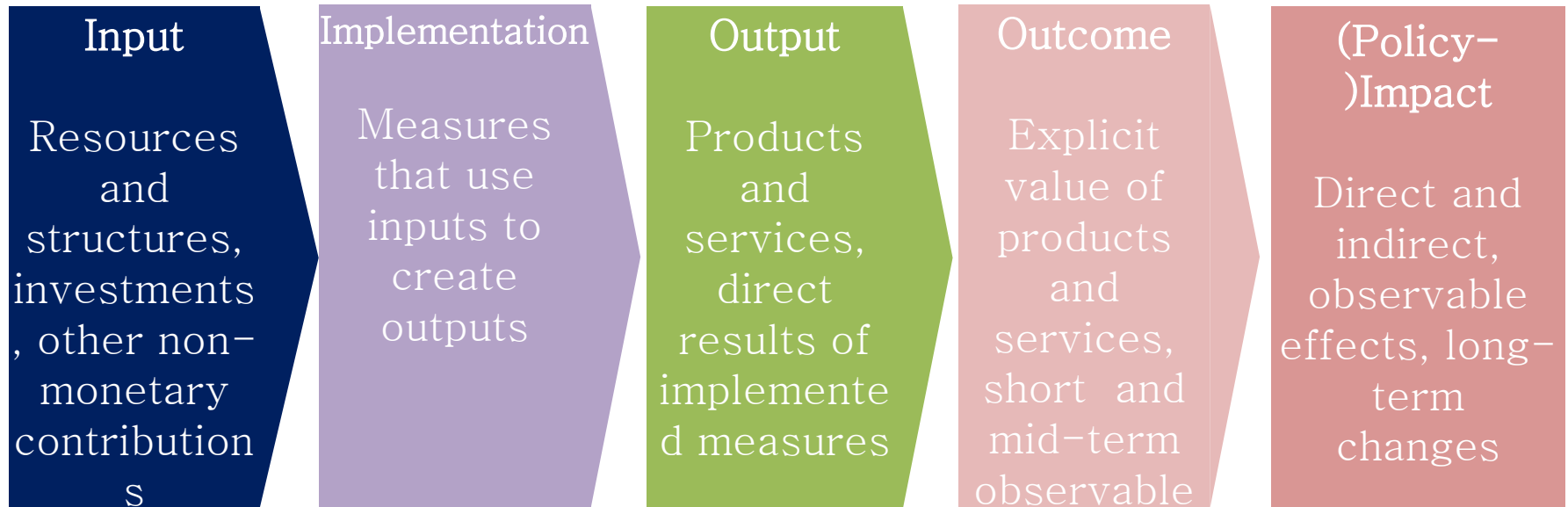
„The inter-ministerial working group on adaptation (IMA) **will evaluate** the activities (...) regarding the German Adaptation Strategy (...) on a regular basis in order to assess the progress made in adaptation to climate change in Germany (...).”

Progress Report 2015, p. 98



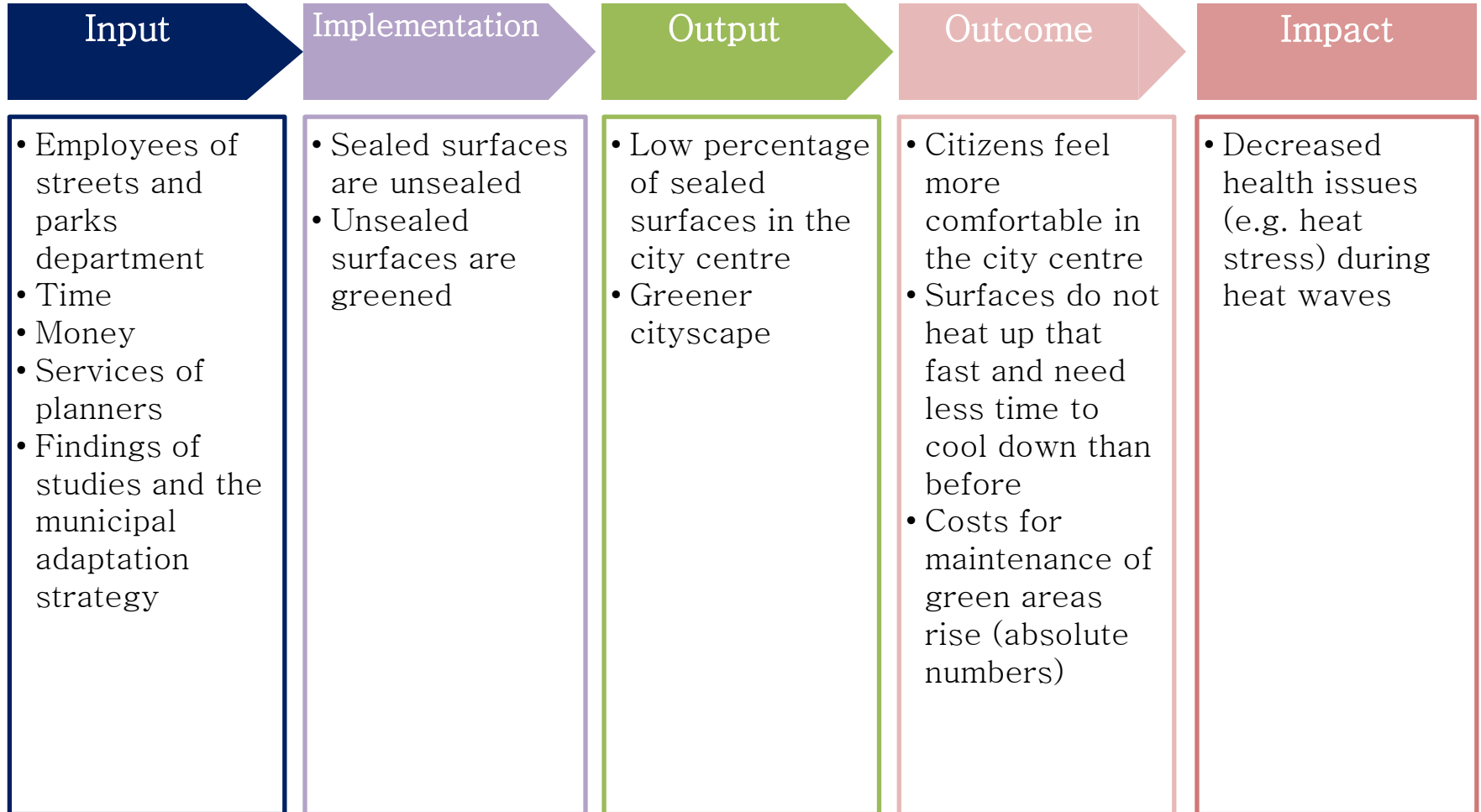
Is the German NAP successfull in fulfilling its goals?

Logic model as conceptual framework

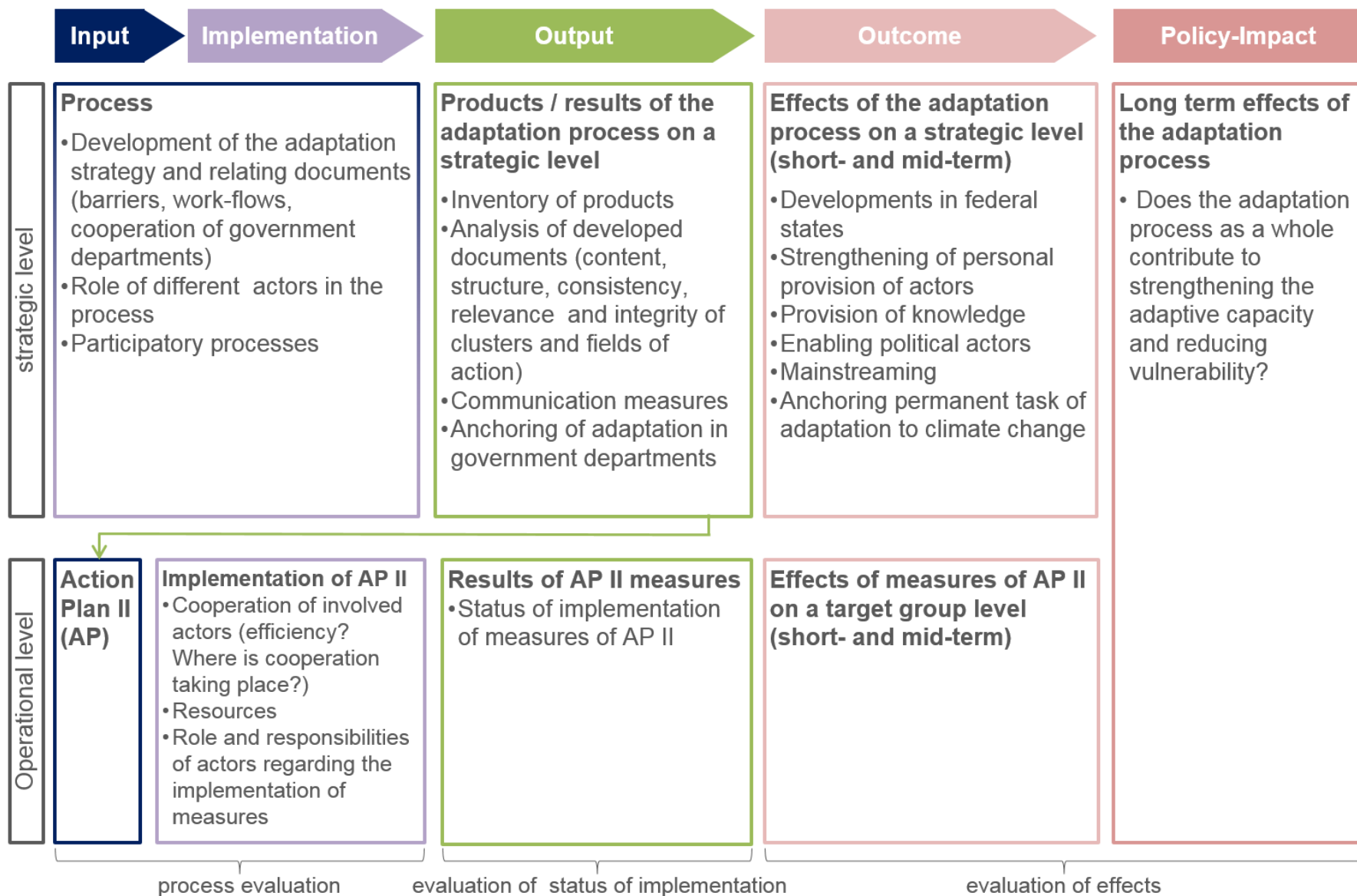


Example

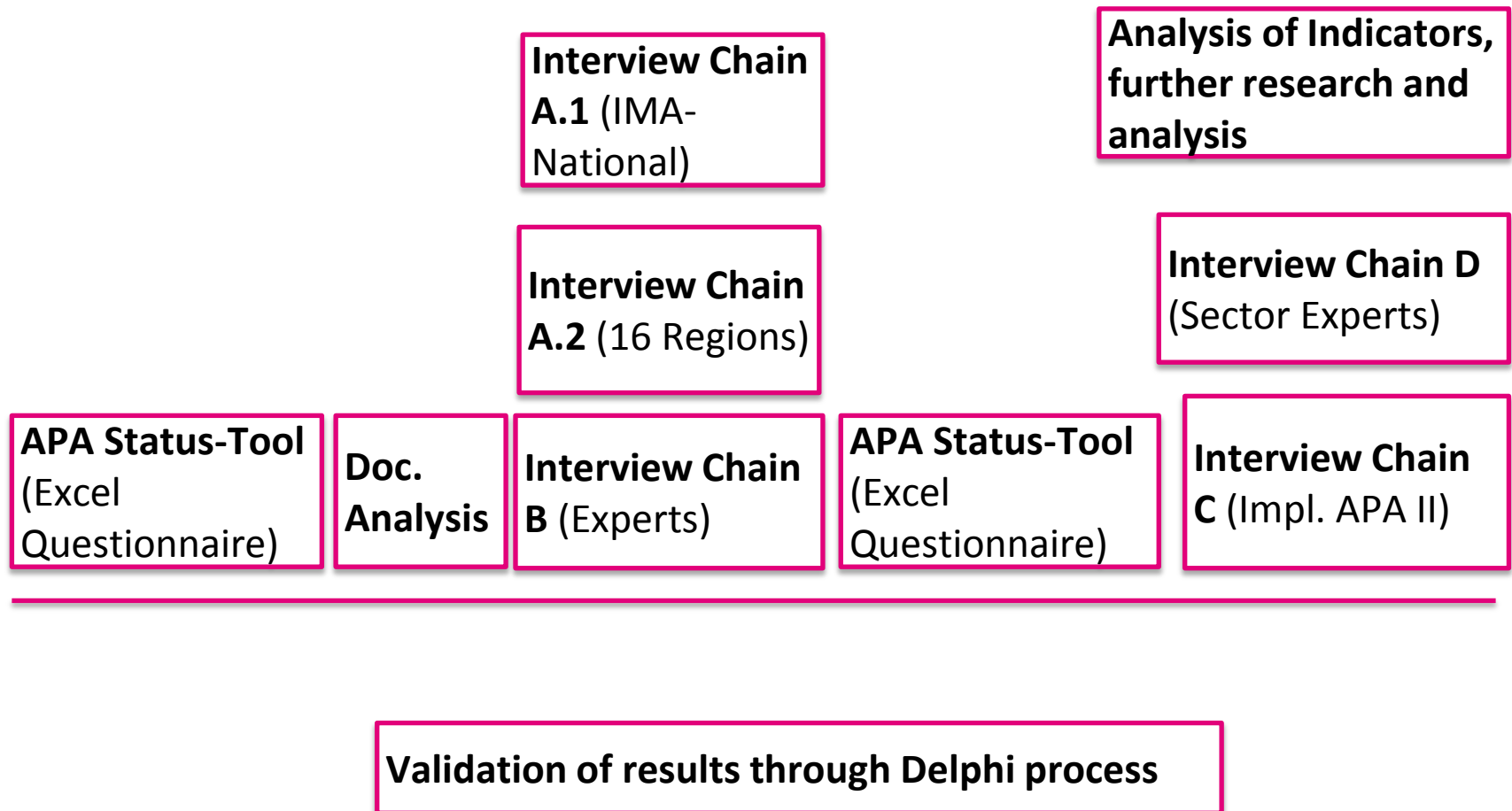
Greening of sealed surfaces in the densely populated city centre of a medium size city



Logic model for the German evaluation



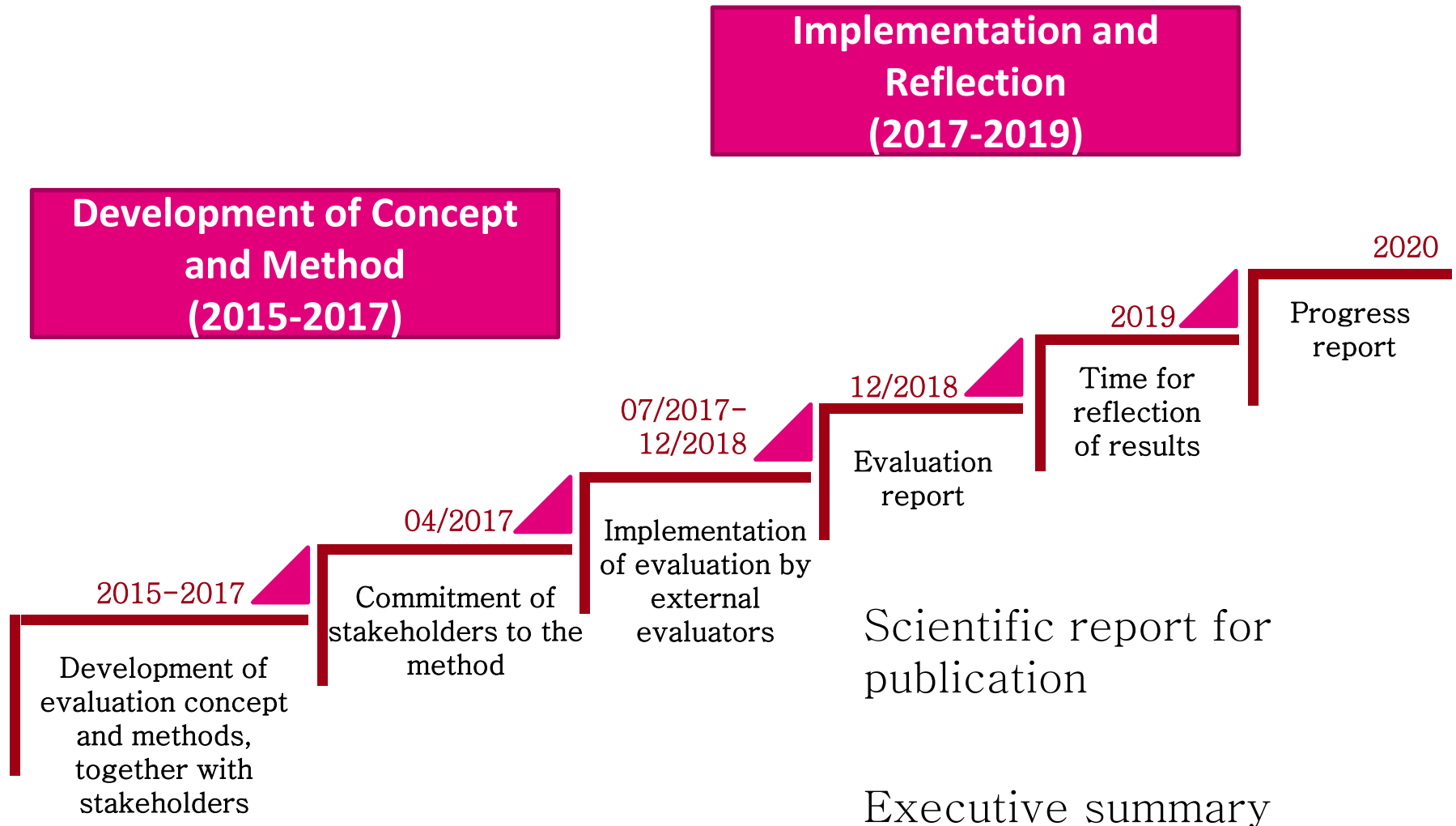
Methods for the Evaluation



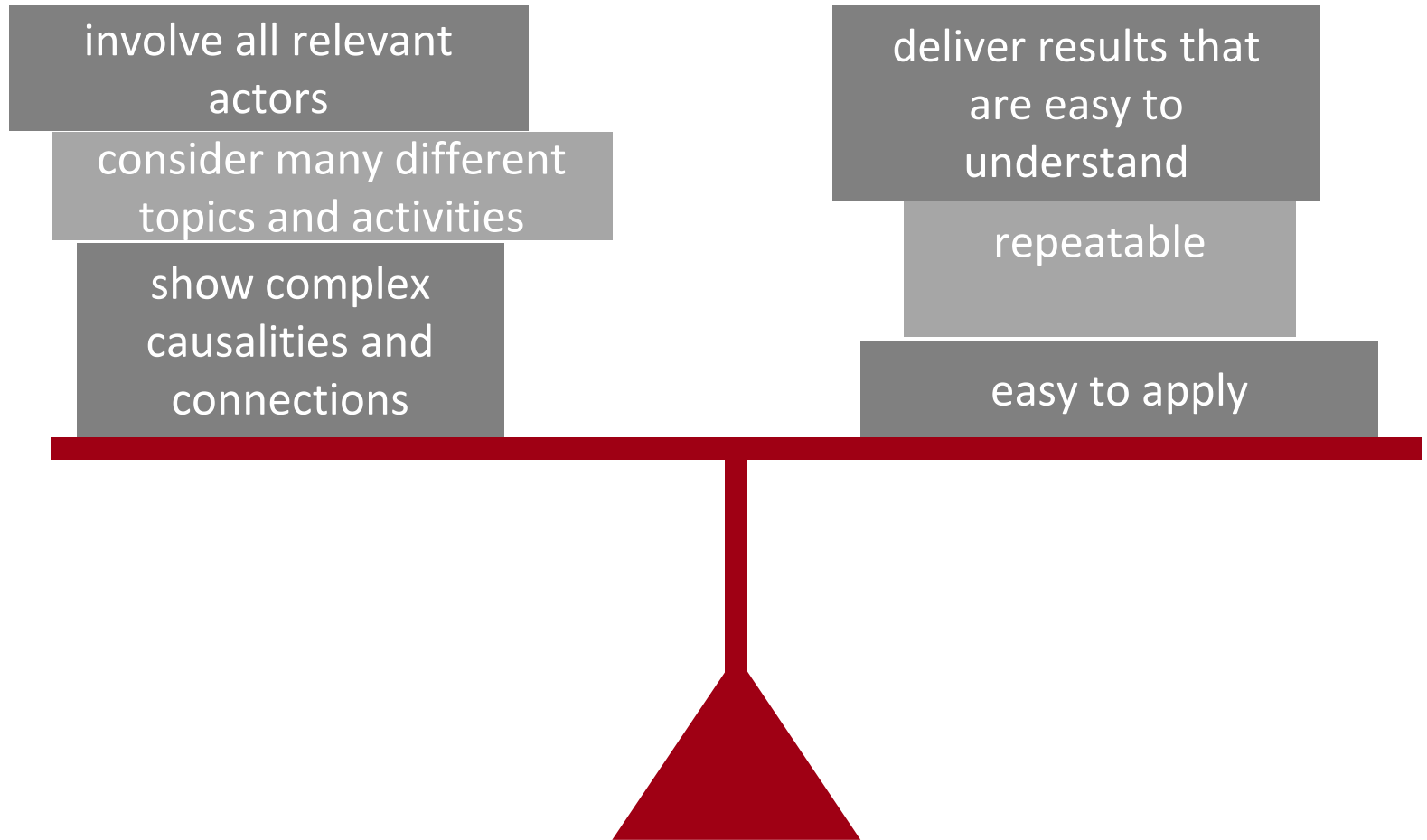
Overview of Presentation

- National Adaptation Process in Germany
- Monitoring and Evaluation Process
- **(Some) Lessons Learned**

Split Development and Implementation



Challenge: finding balance between...



Thank you!

Thomas Abeling
German Environment Agency (Umweltbundesamt)
Section KomPass - Climate Impacts and Adaptation in Germany

Wörlitzer Platz 1
06844 Dessau-Roßlau
Germany

tel: +49 (0)340 2103 2501
fax: +49 (0)340 2014 2501
thomas.abeling@uba.de

